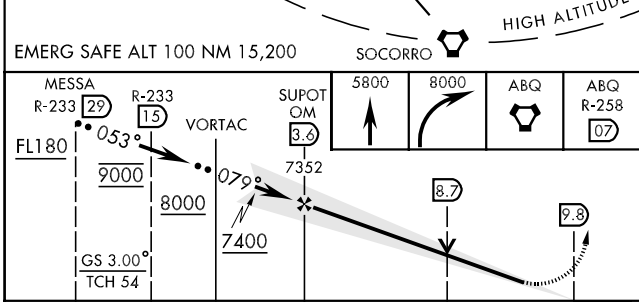
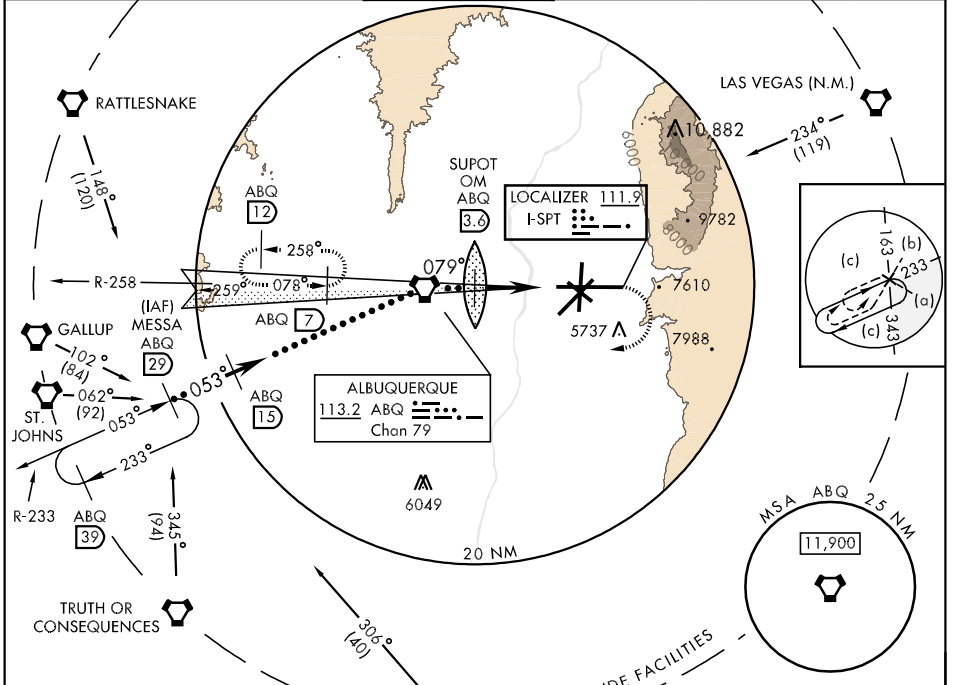


LOC I-SPY 111.9	APCH CRS 079°	Rwy Idg 12,793' TDZE 5317 Arpt Elev 5355	JAL-12 [USAF]	ALBUQUERQUE INTL SUNPORT (KIKR/KABQ)
---------------------------	-------------------------	---	---------------	--------------------------------------

CAUTION: 5389' obst 750' left of rwy centerline abeam Rwy 8 thld.
CAUTION: Mountains rising to 10,000' 7 NM E of field.
 Use ABQ VORTAC DME when on LOC course.
 * Not authorized E of Rwy 17-35.

MALSR MISSED APPROACH: Climb to 5800 then climbing right turn to 8000 direct ABQ VORTAC and ABQ R-258 to 7 DME and hold.

ATIS 118.0 257.7	ALBUQUERQUE APP CON 123.9 354.1	ALBUQUERQUE TOWER 120.3 351.9	GND CON 121.9 348.6	CLNC DEL 119.2 259.3	ASR
----------------------------	---	---	-------------------------------	--------------------------------	-----



ELEV 5355 Rwy 8 Idg 12,793'
 Rwy 17 Idg 9110'
 Rwy 35 Idg 9110'
 079° 6.1 NM from SUPOT OM

TDZE 5317
 5528 A 5402 A
 5458 DOWN
 5354 A 35 P 30 P

REIL Rwy 17, 26, 30 and 35
 HIRL Rwy 3-21 and 8-26
 MRL Rwy 12-30 and 17-35
 TDZL/CL Rwy 3 and 8

LOC FAF to MAP 6.1 NM
 Knots: 120 140 160 180 200
 Min:Sec: 3:03 2:37 2:17 2:02 1:50

CATEGORY	C	D	E
S-ILS 8	5517/24	200	(200-½)
S-LOC 8	5640/40 323	(300-¾)	5740/50 423 (400-1)
CIRCLING	5900-1½ 545 (600-1½)	5940-2 585 (600-2)	*6040-2½ 685 (700-2½)
S-ASR 8	5700/24 383 (400-½)	5700/50 383	(400-1)

SW-1, 19 NOV 2009 to 17 DEC 2009

SW-1, 19 NOV 2009 to 17 DEC 2009