

# ILS or LOC RWY 3

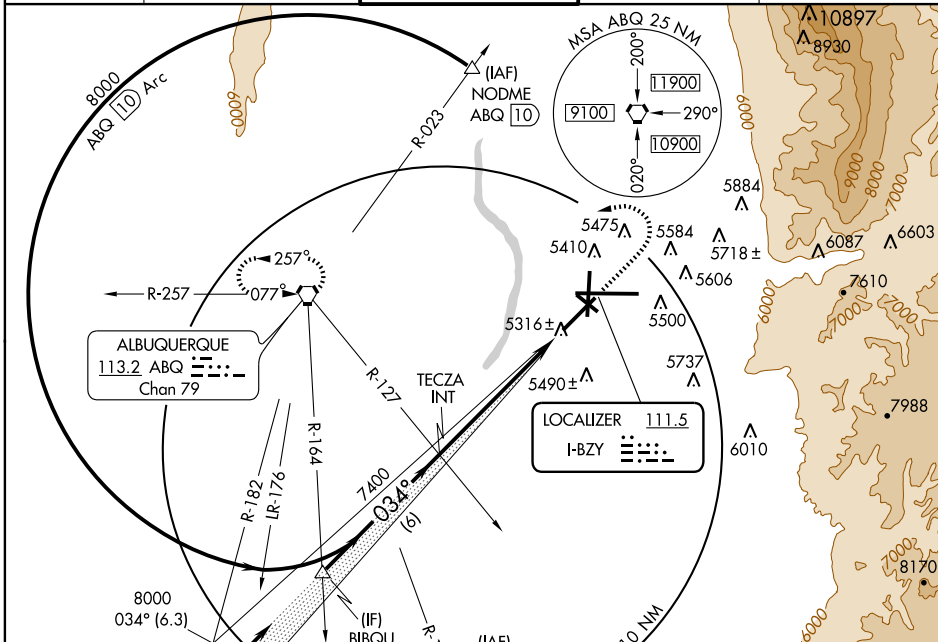
ALBUQUERQUE INTL SUNPORT (ABQ)

LOC I-BZY <b>111.5</b>	APP CRS <b>034°</b>	Rwy Idg <b>10000</b>
		TDZE <b>5312</b>
		Apt Elev <b>5355</b>

**ASR** For inoperative MALSRS, increase S-LOC 3 Cat D visibility to RVR 5000. Use of flight director or autopilot or heads up display guidance system (HGS) required.

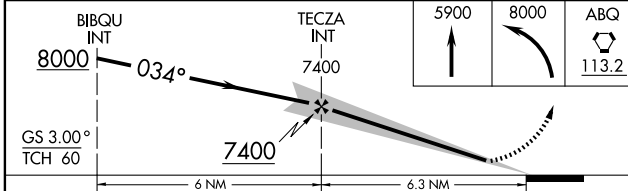
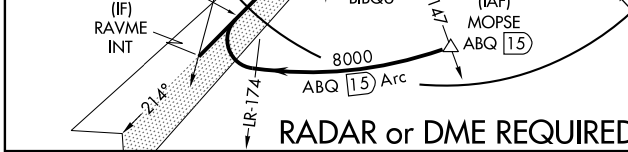
**MALSRS** MISSED APPROACH: Climb to 5900 then climbing left turn to 8000 direct ABQ VORTAC and hold, continue climb in hold to 8000.

ATIS <b>118.0 257.7</b>	ALBUQUERQUE APP CON <b>123.9 354.1</b>	ALBUQUERQUE TOWER <b>120.3 351.9</b>	GND CON <b>121.9 348.6</b>	CLNC DEL <b>119.2 259.3</b>
----------------------------	---	---	-------------------------------	--------------------------------

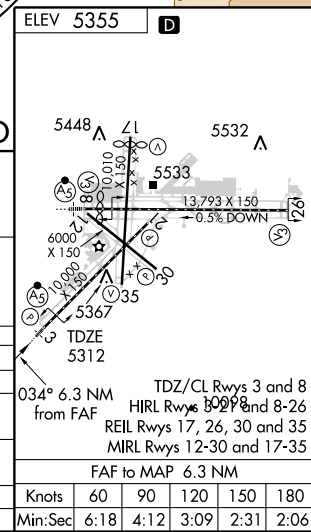


SW-1, 11 MAR 2010 to 08 APR 2010

SW-1, 11 MAR 2010 to 08 APR 2010



CATEGORY	A	B	C	D
S-ILS 3	5512/24 200 (200-½)			
S-LOC 3	5600/24 288 (300-½)		5600/40 288 (300-¾)	
CIRCLING	5840-1 485 (500-1)		5900-1½ 545 (600-1½)	5920-2 565 (600-2)
SPECIAL AIRCREW AND AIRCRAFT CERTIFICATION REQUIRED				
S-ILS 3	5512/18 200 (200-½)			



Knots	60	90	120	150	180
Min:Sec	6:18	4:12	3:09	2:31	2:06