

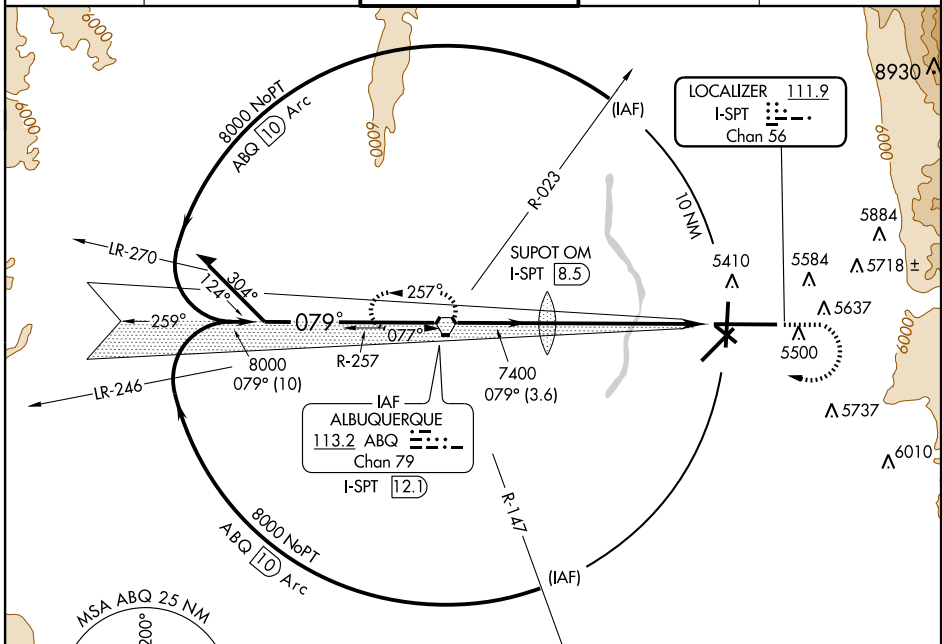
LOC/DME I-SPT 111.9 Chan 56	APP CRS 079°	Rwy Idg 12793 TDZE 5317 Apt Elev 5355
--	------------------------	--

ILS or LOC RWY 8

ALBUQUERQUE INTL SUNPORT (ABQ)

<p>▼ For inoperative MALS, increase Cat D S-LOC 8 visibility to RVR 5000.</p>	<p>MALS</p>	<p>MISSED APPROACH: Climb to 5800 then climbing right turn to 8000 direct ABQ VORTAC and hold.</p>
--	-------------	--

ATIS 118.0 257.7	ALBUQUERQUE APP CON 123.9 354.1	ALBUQUERQUE TOWER 120.3 351.9	GND CON 121.9 348.6	CLNC DEL 119.2 259.3
----------------------------	---	---	-------------------------------	--------------------------------

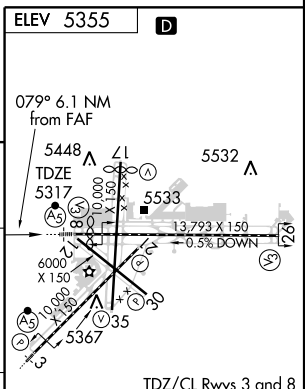


SW-1, 19 NOV 2009 to 17 DEC 2009

SW-1, 19 NOV 2009 to 17 DEC 2009



Remain within 10 NM	VORTAC I-SPT 12.1	5800	8000	ABQ 113.2
Use I-SPT DME when on LOC course.	SUPOT OM I-SPT 8.5	7352	7400	I-SPT 2.4
		3.6 NM	6.1 NM	GS 3.00° TCH 54



CATEGORY	A	B	C	D
S-ILS 8	5517/18		200 (200-½)	
S-LOC 8	5640/24		323 (300-½) 5640/40 323 (300-¾)	
CIRCLING	5840-1 485 (500-1)		5900-1½ 545 (600-1½) 5940-2 585 (600-2)	

TDZ/CL Rwys 3 and 8				
HIRL Rwys 3-21 and 8-26				
REIL Rwys 17, 26, 30 and 35				
MIRL Rwys 12-30 and 17-35				
FAF to MAP 6.1 NM				
Knots	60	90	120	150 180
Min:Sec	6:06	4:04	3:03	2:26 2:02