

RNAV (GPS) RWY 3

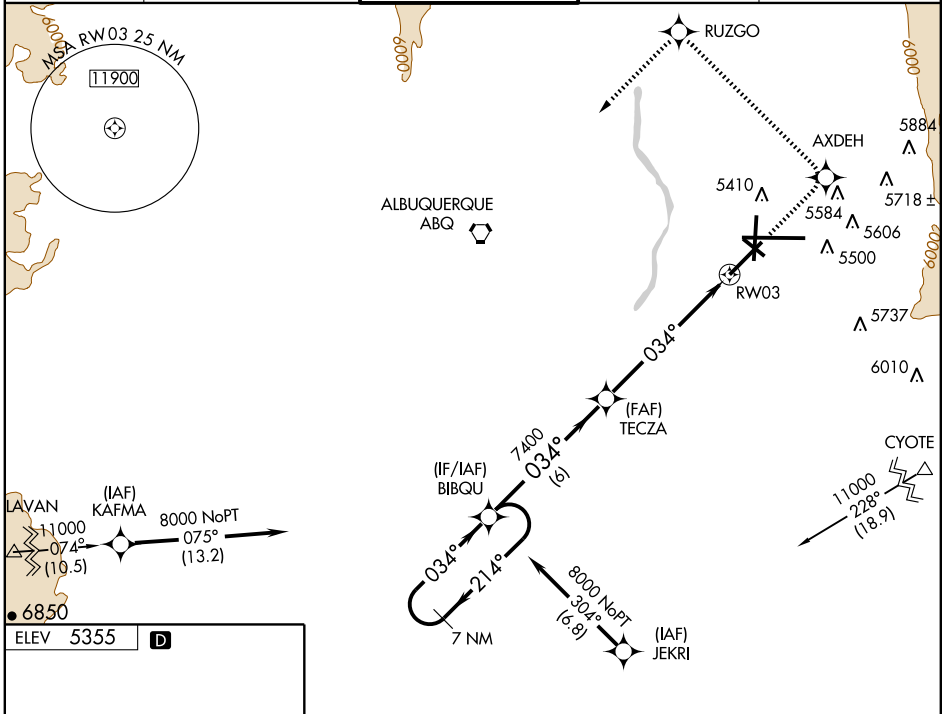
ALBUQUERQUE INTL SUNPORT (ABQ)

APP CRS 034°	Rwy Idg TDZE Apt Elev	10000 5312 5355
------------------------	-----------------------------	--

NA Inoperative table does not apply to LNAV Cat D. Baro-VNAV NA below -25°C (-13°F) GPS or RNP-0.3 required. DME/DME RNP-0.3 NA. For inoperative MALSR, increase LNAV/VNAV Cat D visibility to 1 mile.

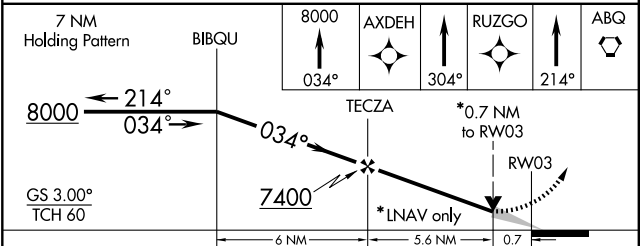
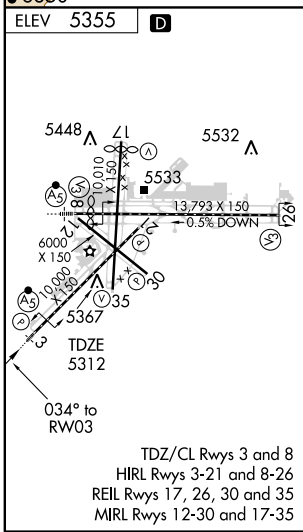
MALSR MISSED APPROACH: Climb to 8000 via 034° course to AXDEH WP then via 304° course to RUZGO WP then via 214° course to ABQ VORTAC.

ATIS 118.0 257.7	ALBUQUERQUE APP CON 123.9 354.1	ALBUQUERQUE TOWER 120.3 351.9	GND CON 121.9 348.6	CLNC DEL 119.2 259.3
----------------------------	---	---	-------------------------------	--------------------------------



SW-1, 11 MAR 2010 to 08 APR 2010

SW-1, 11 MAR 2010 to 08 APR 2010



CATEGORY	A	B	C	D
GLS PA DA	NA			
LNAV/VNAV DA	5580-1/2	268 (300-1/2)		5580-3/4 268 (300-3/4)
LNAV MDA	5600-1/2	288 (300-1/2)		5600-1 288 (300-1)
CIRCLING	5840-1	485 (500-1)	5900-1 1/2 545 (600-1 1/2)	5940-2 585 (600-2)