

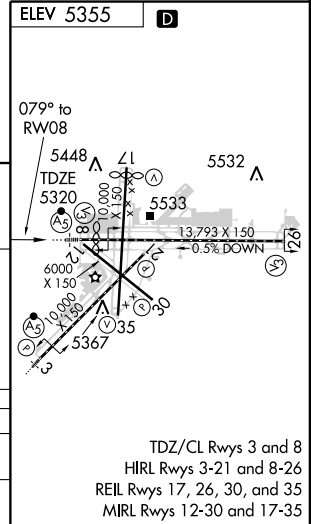
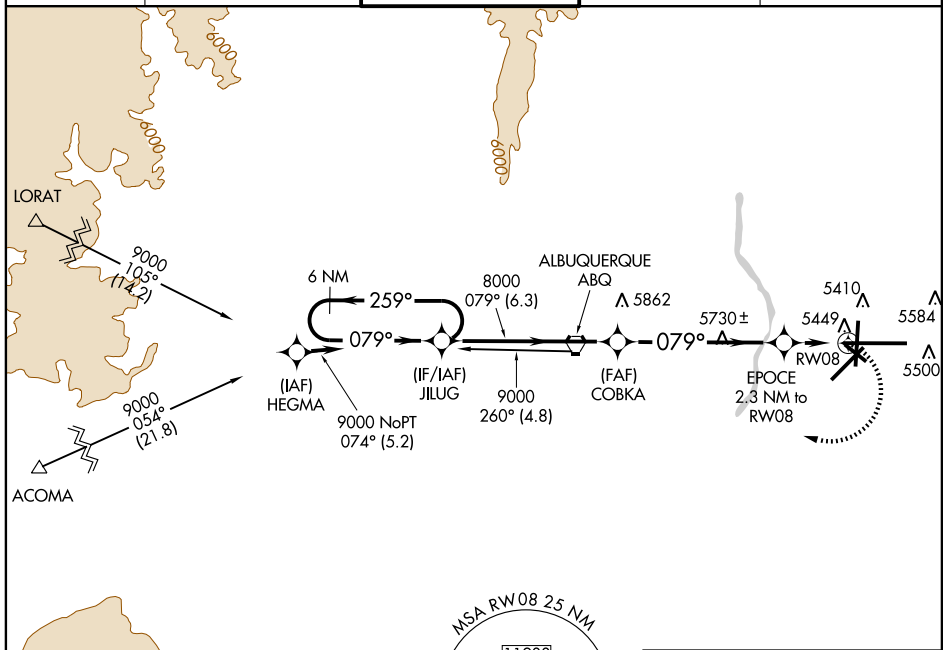
RNAV (GPS) RWY 8

ALBUQUERQUE INTL SUNPORT (ABQ)

APP CRS 079°	Rwy Idg 12793
	TDZE 5320
	Apt Elev 5355

<p>▽ DME/DME RNP-0.3 NA.</p> <p>ASR For inoperative MALSR increase LNAV Cat D visibility to 1¼.</p>	<p>MALSR</p>	<p>MISSED APPROACH: Climbing right turn to 9000 direct JILUG and hold.</p>
--	---------------------	---

<p>ATIS</p> <p>118.0 257.7</p>	<p>ALBUQUERQUE APP CON</p> <p>123.9 354.1</p>	<p>ALBUQUERQUE TOWER</p> <p>120.3 351.9</p>	<p>GND CON</p> <p>121.9 348.6</p>	<p>CLNC DEL</p> <p>119.2 259.3</p>
--	---	---	---	--



6 NM Holding Pattern	JILUG	COBKA	EPOCE 2.3 NM to RWY08	9000	JILUG
9000	← 259°	079° →	8000	3.00° TCH 54	1.2 NM to RWY08
			6100		RWY08
	6.3 NM	6 NM	1.1	1.2	

CATEGORY	A	B	C	D
LNAV MDA	5740/24	420 (400-½)	5740/40 420 (400-¾)	5740/50 420 (400-1)
CIRCLING	5840-1	485 (500-1)	5900-1½ 545 (600-1½)	5920-2 565 (600-2)

TDZ/CL Rwys 3 and 8
HIRL Rwys 3-21 and 8-26
REIL Rwys 17, 26, 30, and 35
MIRL Rwys 12-30 and 17-35

SW-1, 19 NOV 2009 to 17 DEC 2009

SW-1, 19 NOV 2009 to 17 DEC 2009