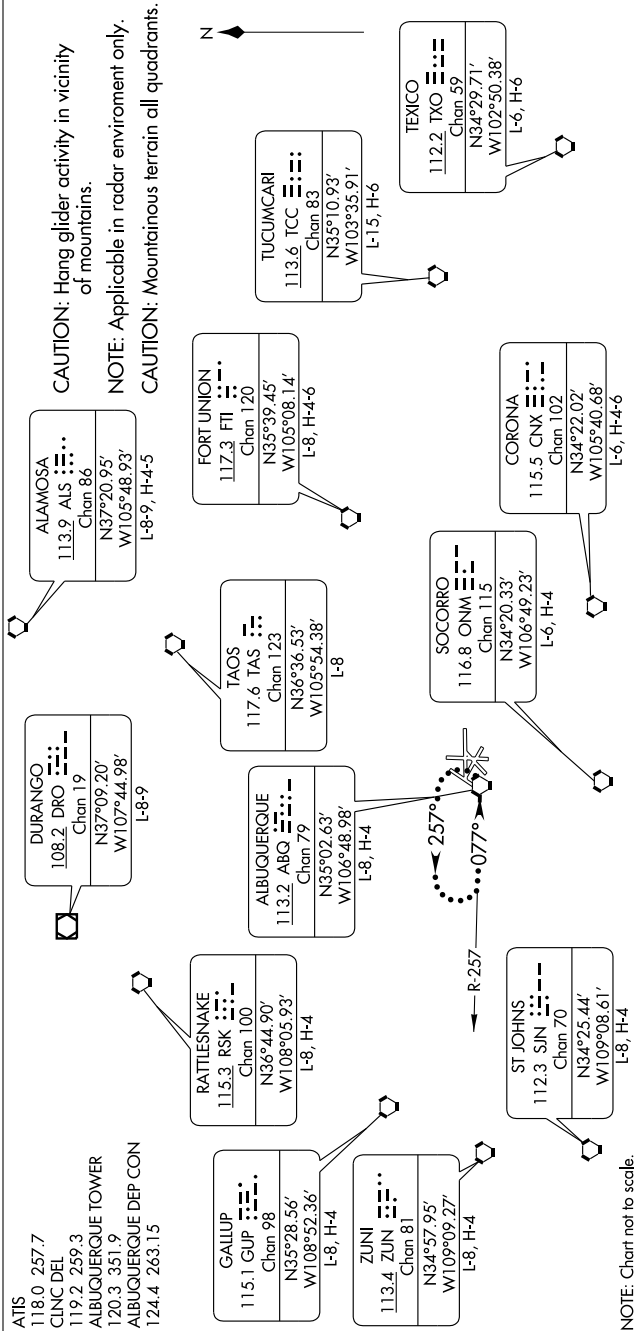


ALBUQUERQUE TWO DEPARTURE

SW-1, 19 NOV 2009 to 17 DEC 2009



DEPARTURE ROUTE DESCRIPTION

All aircraft fly assigned heading for vectors to filed/assigned route. When weather conditions are 5,000' ceiling and 7 miles visibility or greater, for informal noise abatement, request turboprop and turbojet aircraft, except STOL aircraft, making a left turn from Runway 8, to delay their turn until 13.5 DME from the ABQ VORTAC. Expect clearance to filed altitude/flight level 5 minutes after departure.

LOST COMMUNICATIONS: If no transmissions are received for 1 minute after departure and a climb to 14,000 feet or higher has not been issued, proceed direct to ABQ VORTAC, climb in holding pattern to 14,000 feet, then proceed via assigned fix/route. If cleared above 14,000 feet, climb on assigned heading to 14,000 feet, then proceed via assigned fix/route.

SW-1, 19 NOV 2009 to 17 DEC 2009