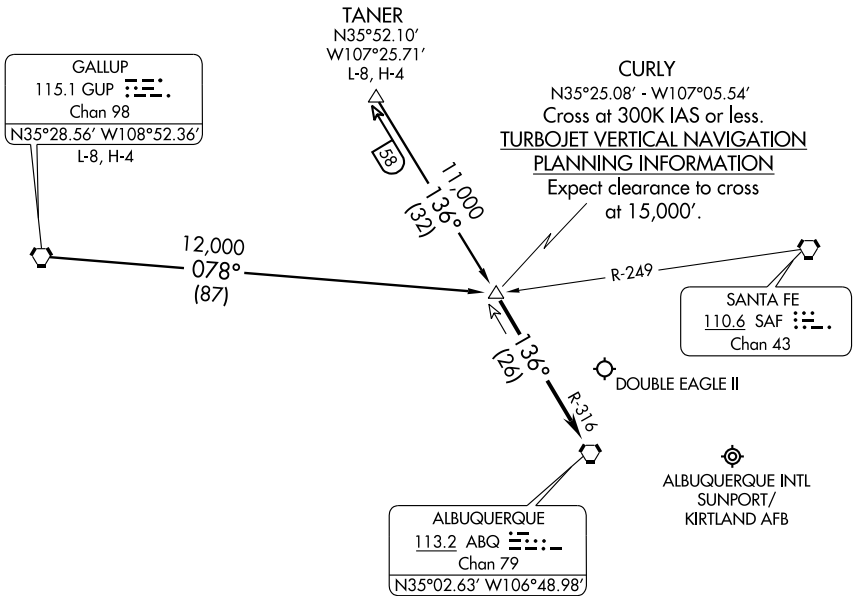


ALBUQUERQUE APP CON
127.4 253.5
ATIS 118.0 257.7



SW-1, 19 NOV 2009 to 17 DEC 2009

SW-1, 19 NOV 2009 to 17 DEC 2009

NOTE: This procedure applicable only to turboprop and turbojet aircraft operating at or above 15,000'.

NOTE: Chart not to scale.

GALLUP TRANSITION (GUP.CURLY2): From over GUP VORTAC via GUP R-078 to CURLY DME fix. Thence....

TANER TRANSITION (TANER.CURLY2): From over TANER INT via ABQ R-316 to CURLY DME fix. Thence....

....From over CURLY DME fix via ABQ R-316 to ABQ VORTAC. Expect vectors to final approach course after passing CURLY DME fix.