

# LARGO TWO DEPARTURE

SL-12 (FAA)

SW-1, 19 NOV 2009 to 17 DEC 2009

- ATIS 118.0 257.7
- CINC DEL 119.2 259.3
- ALBUQUERQUE TOWER 120.3 351.9
- ALBUQUERQUE DEP CON 124.4 263.15

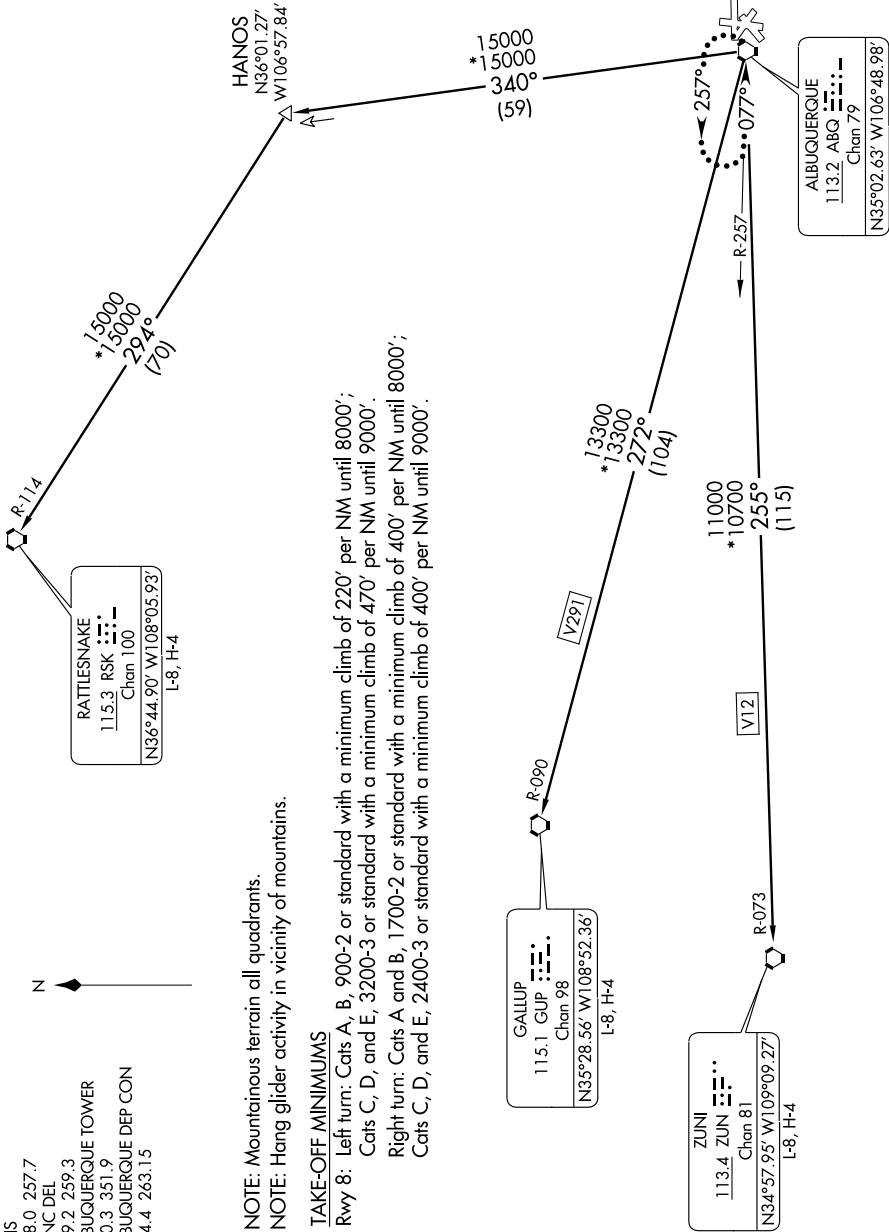


RATTLESLAKE  
115.3 RSK  
Chan 100  
N36°44.90' W108°05.93'  
L-8, H-4

NOTE: Mountainous terrain all quadrants.  
NOTE: Hang glider activity in vicinity of mountains.

### TAKE-OFF MINIMUMS

Rwy 8: Left turn: Cats A, B, 900-2 or standard with a minimum climb of 220' per NM until 8000';  
Cats C, D, and E, 3200-3 or standard with a minimum climb of 470' per NM until 9000'.  
Right turn: Cats A and B, 1700-2 or standard with a minimum climb of 400' per NM until 8000';  
Cats C, D, and E, 2400-3 or standard with a minimum climb of 400' per NM until 9000'.



(NARRATIVE ON FOLLOWING PAGE)

NOTE: Chart not to scale.

# LARGO TWO DEPARTURE