

RNAV (GPS) RWY 36

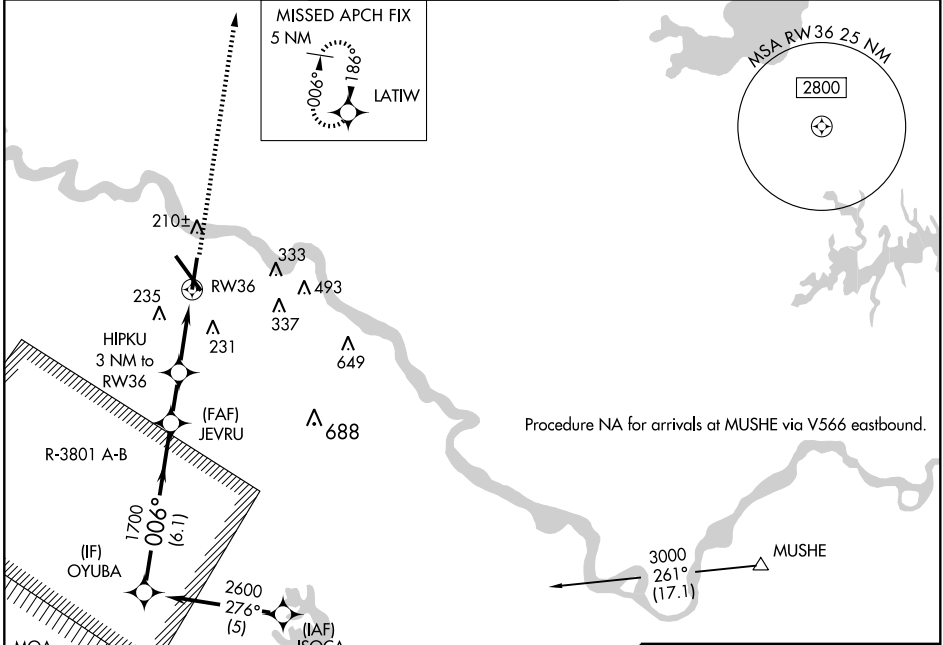
ALEXANDRIA INTL (AEX)

WAAS CH 58100 W36A	APP CRS 006°	Rwy Idg 7001 TDZE 87 Apt Elev 89
--	------------------------	---

▼ DME/DME RNP-0.3 NA. Radar required when R-3801 A-B in use. For uncompensated Baro-VNAV systems, LNAV/VNAV NA below -15°C (5°F) or above 48°C (119°F). Visibility reduction by helicopters NA.

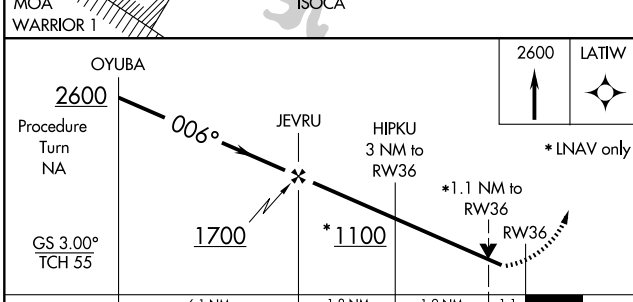
MISSED APPROACH: Climb to 2600 direct LATW and hold.

ASOS 123.975	POLK APP CON 125.4 302.2	ALEXANDRIA TOWER 127.35 (CTAF) 269.2	GND CON 121.9 372.0	CLNC DEL 121.9
------------------------	------------------------------------	---	-------------------------------	--------------------------



SC-4, 11 MAR 2010 to 08 APR 2010

SC-4, 11 MAR 2010 to 08 APR 2010



CATEGORY	A	B	C	D
LPV DA	391-1 304 (400-1)			
LNAV/VNAV DA	425-1¼ 338 (400-1¼)			
LNAV MDA	500-1 413 (500-1)	500-1¼ 413 (500-1¼)		
CIRCLING	540-1¼ 451 (500-1¼)	560-1¼ 471 (500-1¼)	560-1½ 471 (500-1½)	640-2 551 (600-2)

