

ALEXANDRIA, LOUISIANA

LOC I-ERJ 110.1	APP CRS 141°	Rwy Idg 9352 TDZE 85 Apt Elev 89
---------------------------	------------------------	---

AL-13 (FAA)

ILS or LOC RWY 14

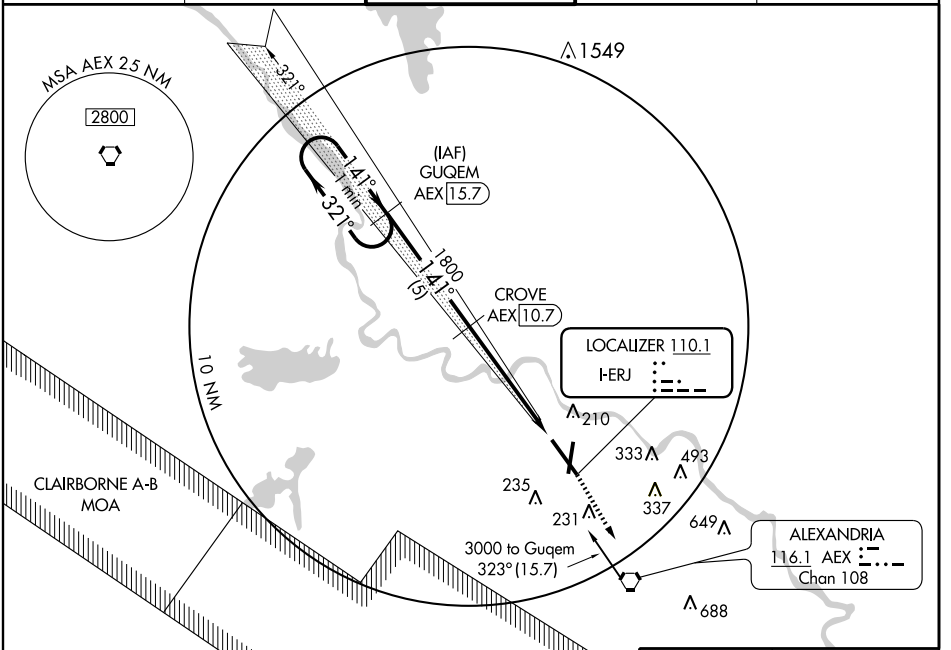
ALEXANDRIA INTL (AEX)

▼ DME from AEX VORTAC, simultaneous reception of I-ERJ and AEX DME required.
When R-3801 B active, Radar and DME required.

SSALR 

MISSED APPROACH: Climb to 2000 direct AEX VORTAC.

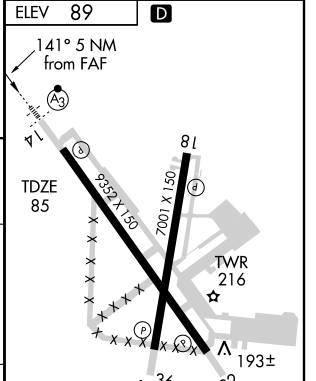
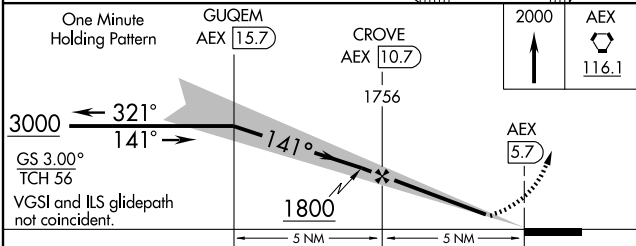
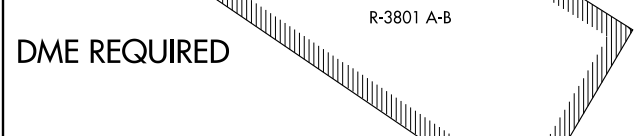
ASOS 123.975	POLK APP CON 125.4 302.2	ALEXANDRIA TOWER 127.35 (CTAF) 269.2	GND CON 121.9 372.0	CLNC DEL 121.9
------------------------	------------------------------------	---	-------------------------------	--------------------------



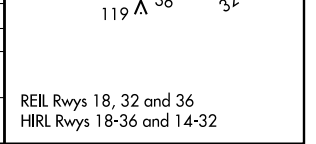
SC-4, 11 FEB 2010 to 11 MAR 2010

SC-4, 11 FEB 2010 to 11 MAR 2010

DME REQUIRED



CATEGORY	A	B	C	D
S-ILS 14		285-½	200 (200-½)	
S-LOC 14		460-½	375 (400-½)	460-¾ 375 (400-¾)
CIRCLING	540-1 451 (500-1)	560-1 471 (500-1)	560-1½ 471 (500-1½)	640-2 551 (600-2)



ALEXANDRIA, LOUISIANA
Orig-B 08325

31°20'N-92°33'W

ALEXANDRIA INTL (AEX)

ILS or LOC RWY 14

REIL Rwy 18, 32 and 36
HIRL Rwy 18-36 and 14-32