

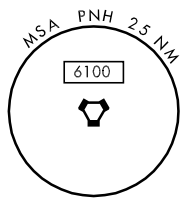
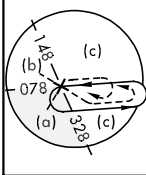
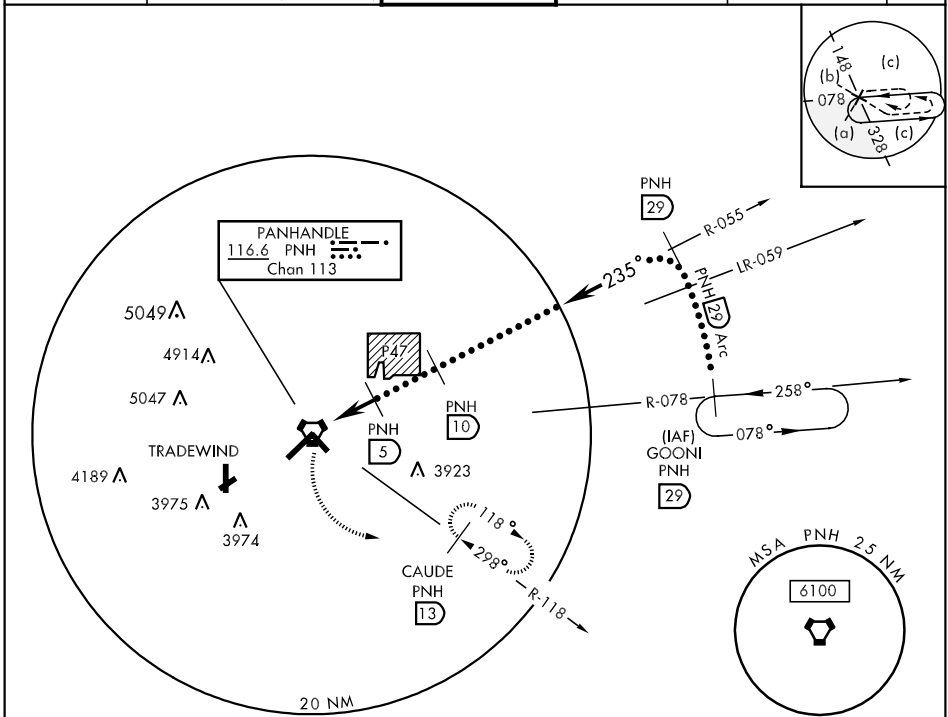
AMARILLO, TEXAS

HI-VOR/DME or TACAN RWY 22

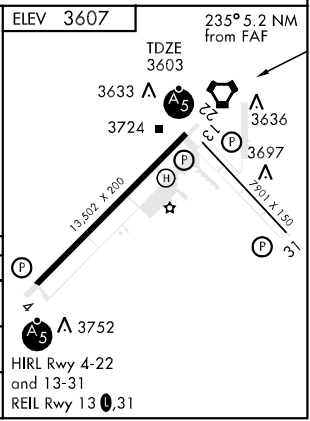
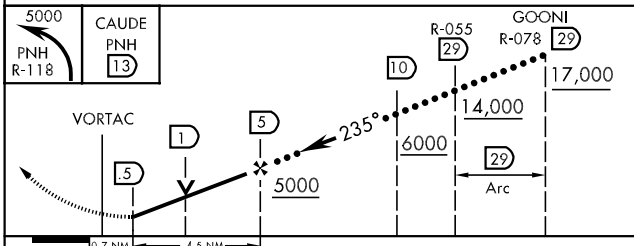
VOR/DME PNH 116.6 Chan 113	APCH CRS 235°	Rwy Idg 13,502 TDZE 3603 Arpt Elev 3607	JAL-19 [USAF]	RICK HUSBAND AMARILLO INTL (KAMA)
--	-------------------------	--	---------------	-----------------------------------

MISSED APPROACH: Climbing left turn to 5000 via PNH R-118 to CAUDE INT/PNH 13 DME and hold.

ATIS 118.85 350.3	AMARILLO APP CON 119.5 307.0 (161° - 339°) 124.8 319.15 (340° - 160°)	AMARILLO TOWER ★ 118.3 0 257.9	GND CON 121.9 348.6	CLNC DEL 121.65	ASR
-----------------------------	---	--	-------------------------------	---------------------------	-----



EMERG SAFE ALT 100 NM 7500



CATEGORY	C	D	E
S-22	3960-1/2 357 (400-1/2)	3960-1 357 (400-1)	
CIRCLING	4080-1 1/2 475 (500-1 1/2)	4240-2 635 (700-2)	4460-3 855 (900-3)
S-ASR-22	3960-3/4 357 (400-3/4)	3960-1 1/4 357 (400-1 1/4)	

AMARILLO, TEXAS 35°13'N-101°42'W RICK HUSBAND AMARILLO INTL (KAMA)

HI-VOR/DME or TACAN RWY 22

SC-2, 11 MAR 2010 to 08 APR 2010

SC-2, 11 MAR 2010 to 08 APR 2010