

AMARILLO, TEXAS

AL-19 (FAA)

# RNAV (GPS) RWY 4

AMARILLO/RICK HUSBAND AMARILLO INTL (AMA)

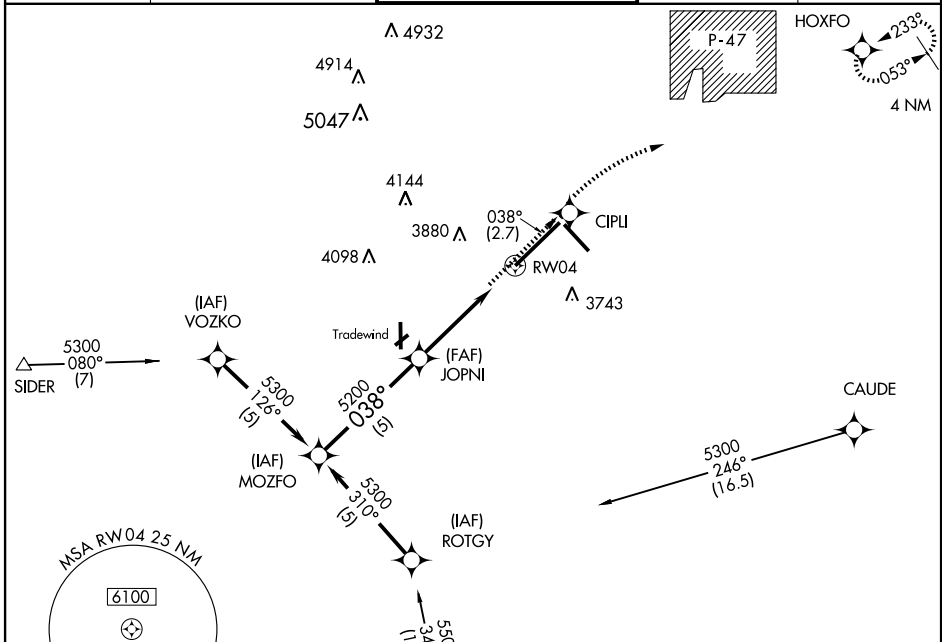
APP CRS <b>038°</b>	Rwy Idg <b>13,502</b>
	TDZE <b>3607</b>
	Apt Elev <b>3607</b>

**▽** GPS or RNP-0.3 REQUIRED. DME/DME RNP-0.3 NA.  
**▲ NA** Baro-VNAV NA below -22°C (-7°F). For inoperative  
**ASR** MALSRL increase LNAV Cat D visibility to 6000 RVR.



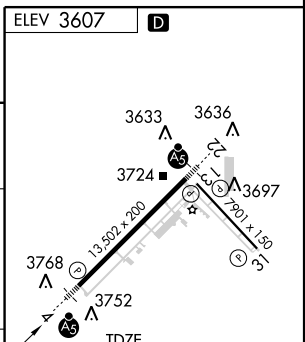
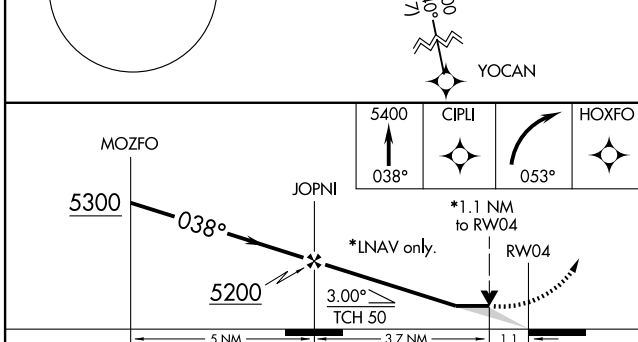
**MISSED APPROACH:** Climb to 5400 via course 038° to CIPLI then right turn via course 053° to HOXFO and hold.

ATIS <b>118.85 350.3</b>	AMARILLO APP CON * <b>119.5 307.0</b>	AMARILLO TOWER * <b>118.3</b> (CTAF) <b>257.9</b>	GND CON <b>121.9 348.6</b>	CLNC DEL <b>121.65</b>
-----------------------------	--	--	-------------------------------	---------------------------



SC-2, 11 MAR 2010 to 08 APR 2010

SC-2, 11 MAR 2010 to 08 APR 2010



CATEGORY	A	B	C	D	E
GLS PA DA	NA				
LNAV/VNAV DA	4020/50		413 (500-1)		
LNAV MDA	4020/24	413 (500-1/2)	4020/40 413 (500-3/4)	4020/50	413 (500-1)
CIRCLING	4080-1 1/2		473 (500-1 1/2)		4240-2 633 (700-2)    4460-3 853 (900-3)

HIRL Rwy 4-22 and 13-31  
 REIL Rwy 13 **●**  
 REIL Rwy 31

AMARILLO, TEXAS  
 Orig 09351

AMARILLO/RICK HUSBAND AMARILLO INTL (AMA)  
 35° 13'N-101° 42'W

# RNAV (GPS) RWY 4