

BINGHAMTON, NEW YORK

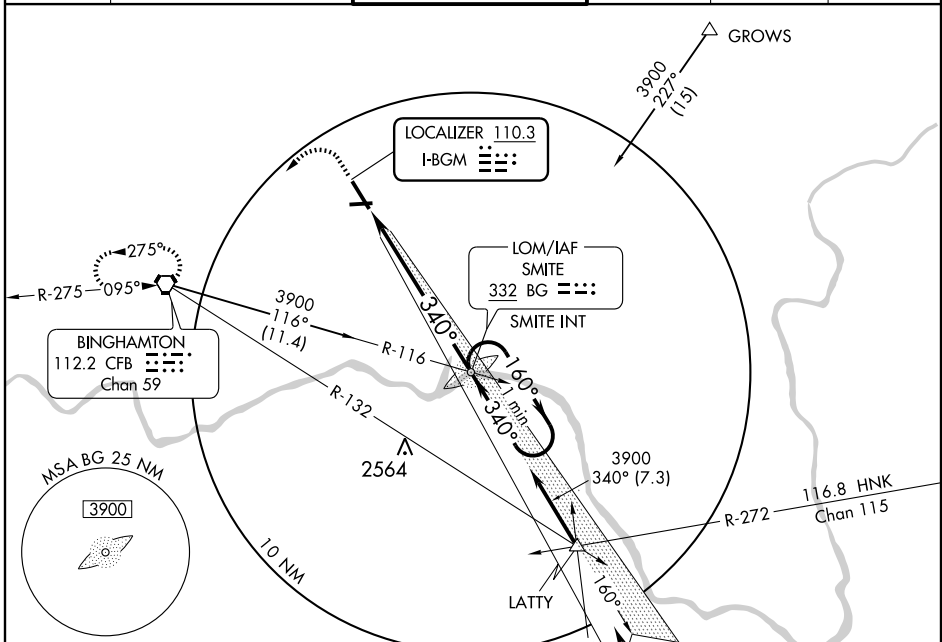
AL-20 (FAA)

ILS RWY 34

LOC I-BGM 110.3	APP CRS 340°	Rwy ldg 7100
		TDZE 1597
		Apt Elev 1636

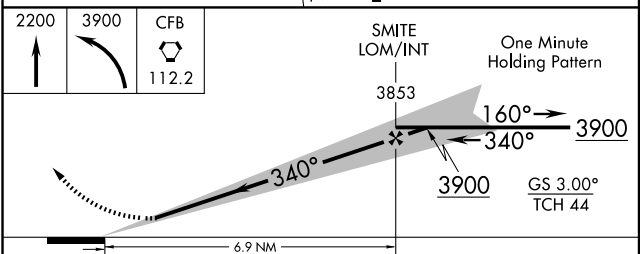
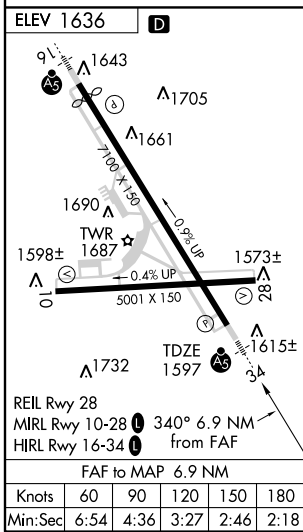
BINGHAMTON/
GREATER BINGHAMTON/EDWIN A. LINK FIELD (BGM)

ATIS 128.15	BINGHAMTON APP CON * 118.6 257.625	BINGHAMTON TOWER * 119.3 (CTAF) 239.25	GND CON 121.9	CLNC DEL 125.05	UNICOM 122.95
-----------------------	--	---	-------------------------	---------------------------	-------------------------



NE-2, 19 NOV 2009 to 17 DEC 2009

NE-2, 19 NOV 2009 to 17 DEC 2009



CATEGORY	A	B	C	D
S-ILS 34		1797/24	200 (200-1/2)	
S-LOC 34		1960/24	363 (400-1/2)	1960/40 363 (400-3/4)
CIRCLING	2100-1	464 (500-1)	2100-1 1/2 464 (500-1 1/2)	2200-2 564 (600-2)

BINGHAMTON, NEW YORK
Amdt 2A 09239

BINGHAMTON/ GREATER BINGHAMTON/EDWIN A. LINK FIELD (BGM)
42° 13'N - 75° 59'W

ILS RWY 34