

# RNAV (GPS) RWY 34

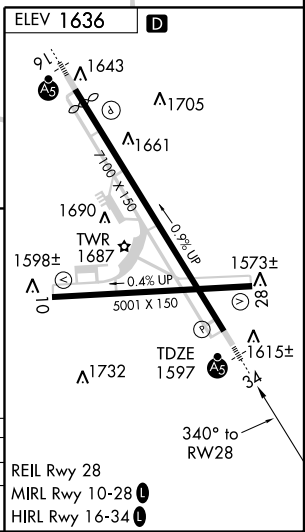
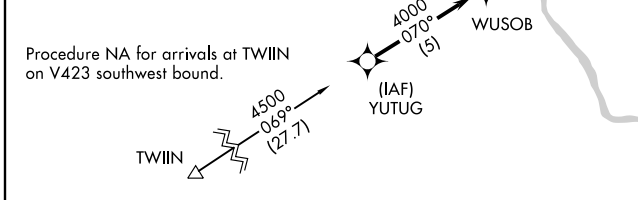
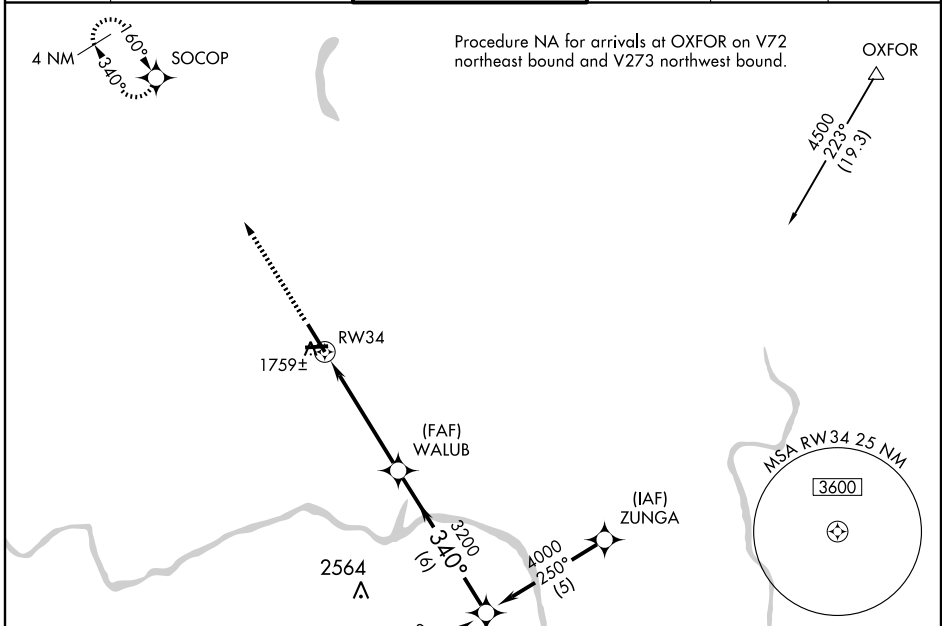
BINGHAMTON/GREATER BINGHAMTON/EDWIN A. LINK FIELD (BGM)

APP CRS	Rwy Idg	<b>7100</b>
<b>340°</b>	TDZE	<b>1597</b>
	Apt Elev	<b>1636</b>

**▼** GPS or RNP-0.3 Required. DME/DME RNP-0.3 NA. When VGSI inop, straight-in/circling Rwy 34 procedure NA at night.  
**▲ NA** Inoperative table does not apply to Cat. A/B. For inoperative MALSR, increase LNAV MDA Cat. C/D visibility to RVR 6000.

**MALSR** MISSED APPROACH: Climb to 3900 direct SOCOB WP and hold.

ATIS	BINGHAMTON APP CON *	BINGHAMTON TOWER *	GND CON	CLNC DEL	UNICOM
<b>128.15</b>	<b>118.6 257.625</b>	<b>119.3 (CTAF) 0 239.25</b>	<b>121.9</b>	<b>125.05</b>	<b>122.95</b>



3900	SOCOP	WUSOB
RW34		WALUB
5 NM		6 NM
3200		4000
2.98°		340°
TCH 50		Procedure Turn NA

CATEGORY	A	B	C	D
LNAV MDA	2020/50			
	423 (400-1)			
CIRCLING	2100-1	464 (500-1)	2100-1½ 464 (500-1½)	2200-2 564 (600-2)

# RNAV (GPS) RWY 34

NE-2, 19 NOV 2009 to 17 DEC 2009

NE-2, 19 NOV 2009 to 17 DEC 2009