

WAAS CH <b>66015</b> <b>W16A</b>	APP CRS <b>160°</b>	Rwy Idg TDZE <b>6700</b> <b>1634</b> Apt Elev <b>1636</b>
--	------------------------	--

BINGHAMTON/  
GREATER BINGHAMTON/EDWIN A. LINK FIELD (BGM) **RNAV (GPS) RWY 16**

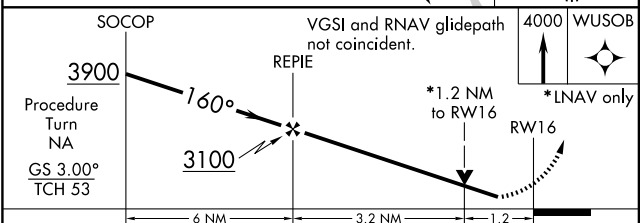
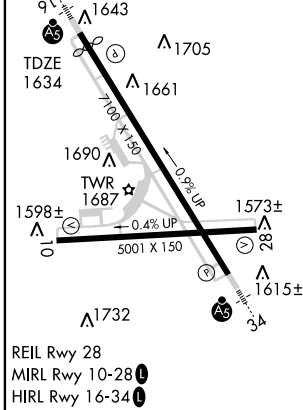
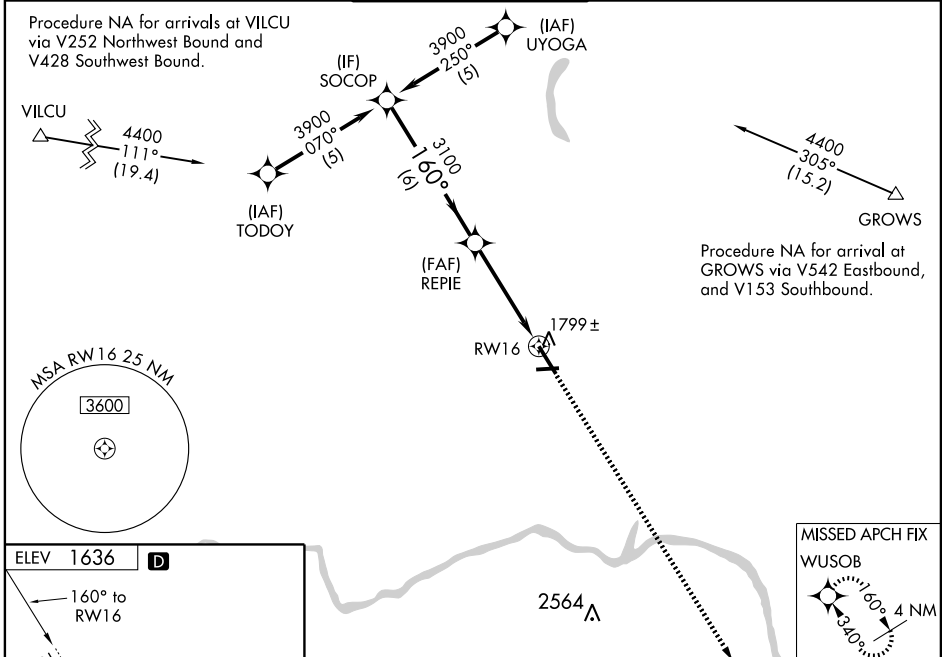
When VGSI inoperative, Circling Rwy 34 NA at night. Inoperative table does not apply to LPV all Cats. For uncompensated Baro-VNAV systems, LNAV/VNAV NA below -18°C (0°F) or above 45°C (113°F). DME/DME RNP-0.3 NA. Visibility reduction by helicopters NA.

▼ When local altimeter setting not received, use Ithaca altimeter setting and increase all DA 138 feet and all MDA 140 feet and increase LNAV/VNAV all Cats visibility ½ mile and LNAV and Circling Cats C and D visibility ¼ mile. For inoperative MALS increase LNAV Cats A, C and D visibility ¼ mile. For inoperative MALS when using Ithaca altimeter setting increase LPV all Cats visibility ½ mile, LNAV Cats A and B visibility ¼ mile. Baro-VNAV and VDP NA when using Ithaca altimeter setting.

**MALS**  
AS

**MISSED APPROACH:**  
Climb to 4000 direct WUSOB and hold.

ATIS <b>128.15</b>	BINGHAMTON APP CON * <b>118.6 257.625</b>	BINGHAMTON TOWER * <b>119.3 (CTAF) 0 239.25</b>	GND CON <b>121.9</b>	CLNC DEL <b>125.05</b>	UNICOM <b>122.95</b>
-----------------------	--	--	-------------------------	---------------------------	-------------------------



CATEGORY	A	B	C	D
LPV DA	1884-¾ 250 (300-¾)			
LNAV/VNAV DA	1984-¾ 350 (400-¾)			
LNAV MDA	2060-¾ 426 (500-¾)		2060-1 426 (500-1)	
CIRCLING	2120-1 484 (500-1)		2120-1½ 484 (500-1½) 2200-2 564 (600-2)	

NE-2, 11 MAR 2010 to 08 APR 2010