

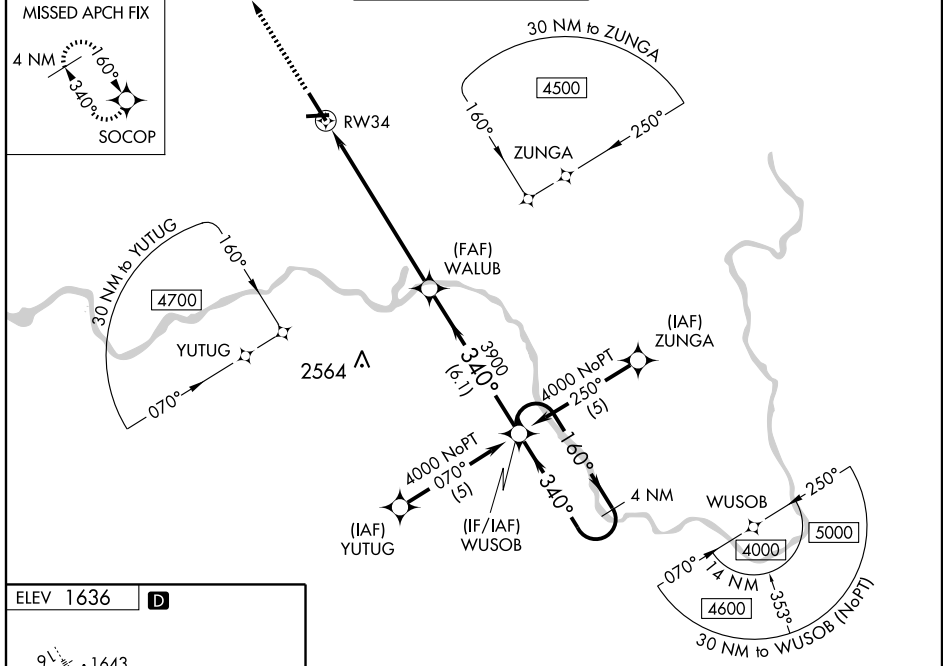
WAAS CH 93915 W34A	APP CRS 340°	Rwy Idg TDZE 1600 Apt Elev 1636
--	------------------------	---

BINGHAMTON/
GREATER BINGHAMTON/EDWIN A. LINK FIELD (BGM) **RNAV (GPS) RWY 34**

For uncompensated Baro-VNAV systems, LNAV/VNAV NA below -18°C (0°F) or above 46°C (114°F). DME/DME RNP-0.3 NA. When local altimeter setting not received, use Ithaca altimeter setting and increase all DA 138 feet and all MDA 140 feet, increase LPV all Cats, LNAV Cats C and D and Circling Cat C and D visibility 1/4 mile, and LNAV/VNAV all Cats visibility 1/2 mile. For inoperative MALSR when using Ithaca altimeter setting increase LPV all Cats visibility to RVR 6000. Baro-VNAV and VDP NA when using Ithaca altimeter setting.

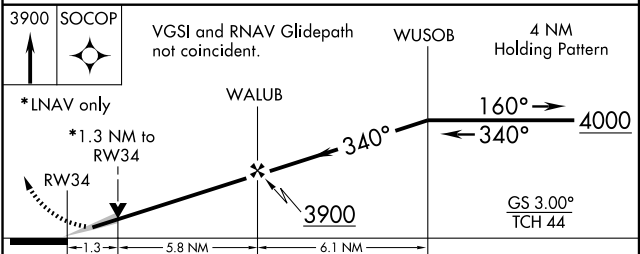
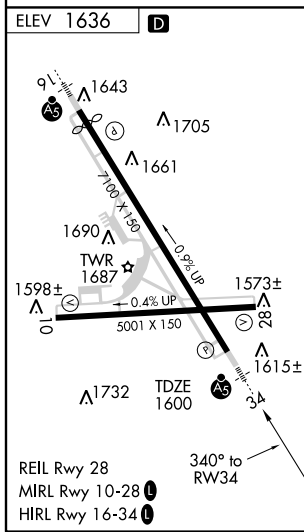
MALSR 	MISSED APPROACH: Climb to 3900 direct SOCOP and hold.
-----------	---

ATIS 128.15	BINGHAMTON APP CON * 118.6 257.625	BINGHAMTON TOWER * 119.3 (CTAF) 239.25	GND CON 121.9	CLNC DEL 125.05	UNICOM 122.95
-----------------------	--	--	-------------------------	---------------------------	-------------------------



NE-2, 11 MAR 2010 to 08 APR 2010

NE-2, 11 MAR 2010 to 08 APR 2010



CATEGORY	A	B	C	D
LPV DA		1800/24	200 (200-1/2)	
LNAV/VNAV DA		2082/60	482 (500-1 1/4)	
LNAV MDA	2040/24	440 (500-1/2)	2040/40 440 (500-3/4)	2040/50 440 (500-1)
CIRCLING	2120-1	484 (500-1)	2120-1 1/2 484 (500-1 1/2)	2200-2 564 (600-2)