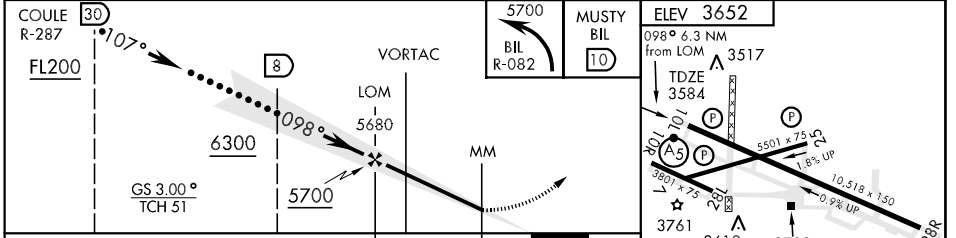
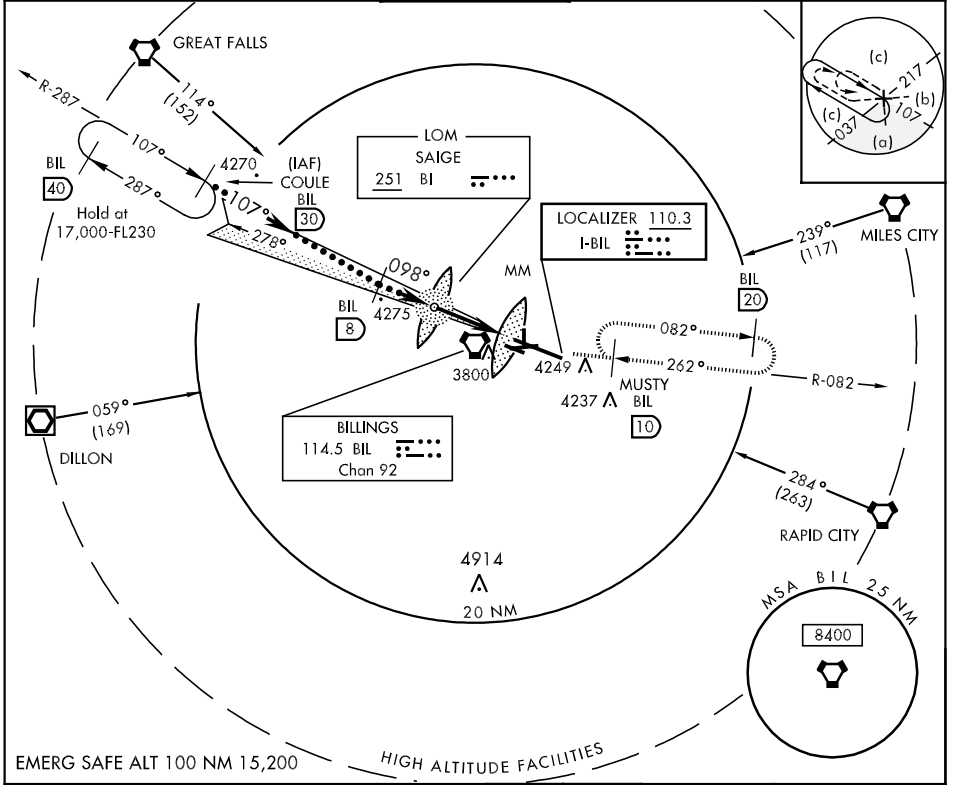


LOCALIZER I-BIL 110.3	APCH CRS 098°	Rwy Idg 10,518 TDZE 3584 Arpt Elev 3652	JAL-48 [USAF]	BILLINGS LOGAN INTL (KBIL)
---------------------------------	-------------------------	--	---------------	----------------------------

	MISSED APPROACH: Climb to 5700 via BIL R-082 to MUSTY/10 DME and hold.
---	--

ATIS 126.3	BILLINGS APP CON 120.5 284.6	BILLINGS TOWER 127.2 257.8	GND CON 121.9	CLNC DEL 121.9
----------------------	--	--------------------------------------	-------------------------	--------------------------



CATEGORY	C	D	E
S-ILS 10L	3784/24	200 (200-½)	
S-LOC 10L	4100/50 516 (500-1)	4100/60 516 (500-1¼)	
CIRCLING	4180-1½ 528 (600-1½)	4220-2 568 (600-2)	4580-3 928 (1000-3)

ELEV 3652				
098° 6.3 NM from LOM	3517	TDZE 3584	3761	3619
3801 x 75	5501 x 75	3703	10,518 x 150	28R
REIL Rwy 25 and 28R				
HIRL Rwy 10L-28R				
MIRL Rwy 7-25 and 10R-28L				
FAF to MAP 6.3 NM				
Knots	120	140	160	180 200
Min:Sec	3:09	2:42	2:22	2:06 1:53

NW-1, 19 NOV 2009 to 17 DEC 2009

NW-1, 19 NOV 2009 to 17 DEC 2009