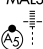


RNAV (GPS) RWY 10L

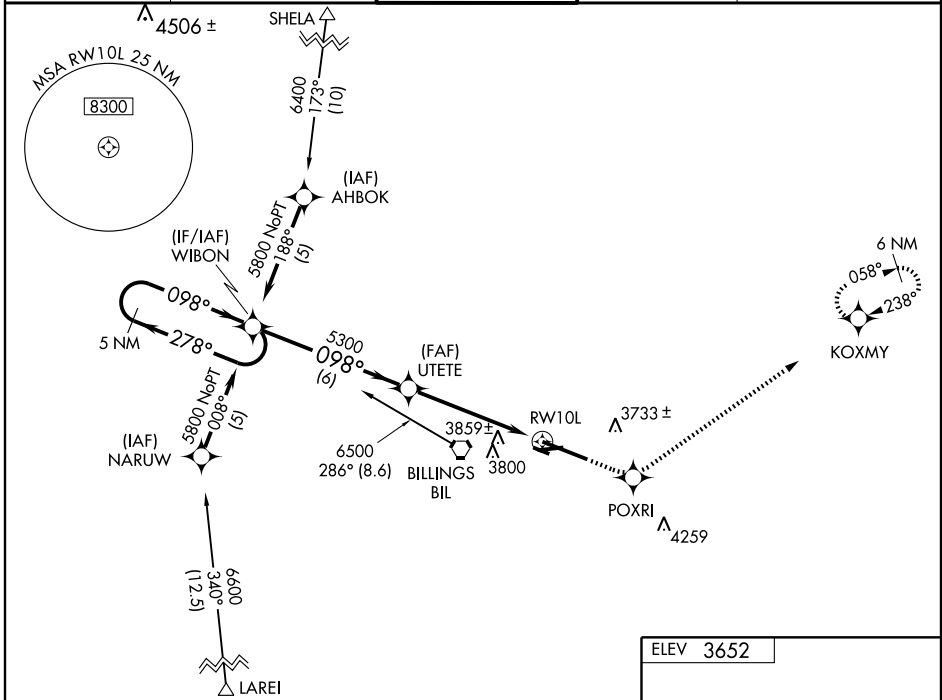
BILLINGS LOGAN INTL (BIL)

WAAS CH 50122 W10A	APP CRS 098°	Rwy Idg TDZE 3584 Apt Elev 3652
---------------------------------	------------------------	---

Baro-VNAV NA below -22°C (-7°F).
DME/DME RNP-0.3 NA.
Inoperative table does not apply to LNAV/VNAV.
For inoperative MALSR increase LPV visibility to RVR 6000 all Cats.

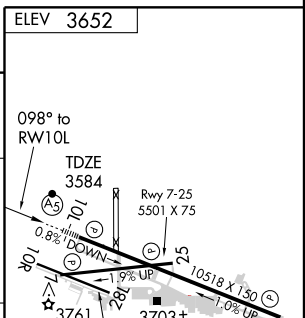
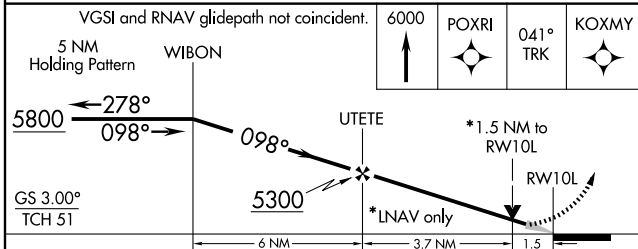
MALSR  MISSED APPROACH: Climb to 6000 direct POXR1 and via 041° track to KOXMY and hold.

ATIS 126.3	BILLINGS APP CON 120.5 284.6	BILLINGS TOWER 127.2 257.8	GND CON 121.9	CLNC DEL 121.9
----------------------	--	--------------------------------------	-------------------------	--------------------------



NW-1, 19 NOV 2009 to 17 DEC 2009

NW-1, 19 NOV 2009 to 17 DEC 2009



CATEGORY	A	B	C	D
LPV DA	3950/40		366 (300-¾)	
LNAV/VNAV DA	4200-2¼		616 (600-2¼)	
LNAV MDA	4120/24	536 (500-½)	4120/50 536 (500-1)	4120/60 536 (500-1¼)
CIRCLING	4200-2¼		548 (600-2¼)	
			568 (600-2¼)	

REIL Rwy 25 and 28R
HIRL Rwy 10L-28R
MIRL Rwy 7-25 and 10R-28L