

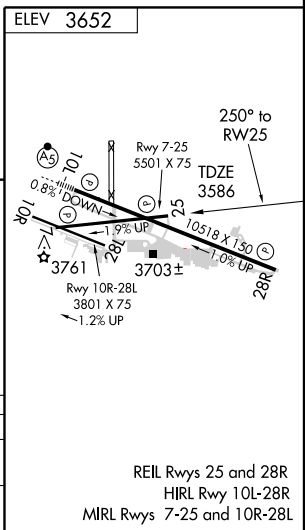
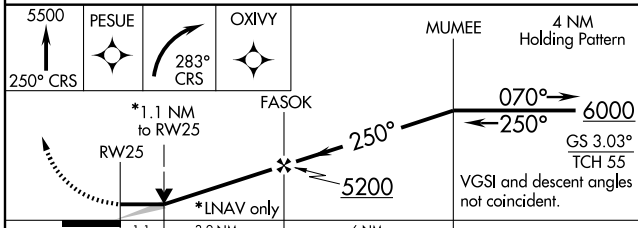
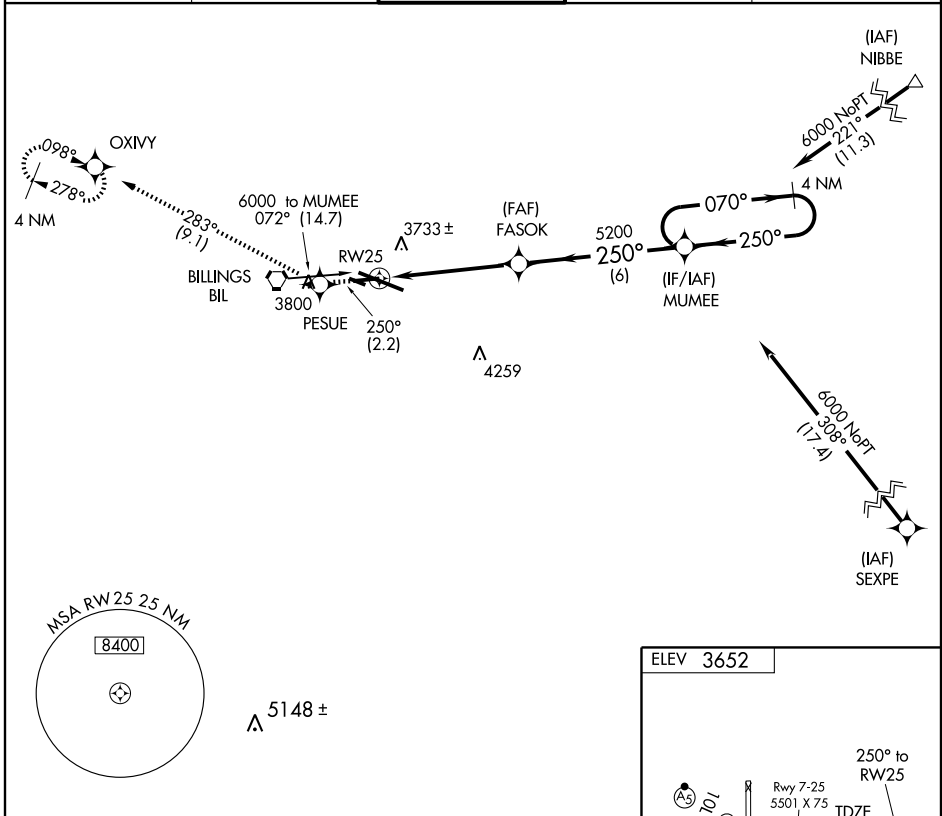
# RNAV (GPS) RWY 25

BILLINGS LOGAN INTL (BIL)

APP CRS <b>250°</b>	Rwy Idg <b>5501</b>
	TDZE <b>3586</b>
	Apt Elev <b>3652</b>

<p><b>▽</b> DME/DME RNP- 0.3 NA.</p>	<p>MISSED APPROACH: Climb to 5500 via 250° course to PESUE WP then right turn via 283° course to OXIVY and hold.</p>
--------------------------------------	--

<p>ATIS <b>126.3</b></p>	<p>BILLINGS APP CON <b>120.5 284.6</b></p>	<p>BILLINGS TOWER <b>127.2 257.8</b></p>	<p>GND CON <b>121.9</b></p>	<p>CLNC DEL <b>121.9</b></p>
------------------------------	--	--	---------------------------------	----------------------------------



CATEGORY	A	B	C	D
RNAV MDA	4020-1	434 (400-1)	4020-1¼ 434 (400-1¼)	4020-1½ 434 (400-1½)
CIRCLING	4160-1¼ 508 (600-1¼)	4180-1¼ 528 (600-1¼)	4180-1½ 528 (600-1½)	4220-2 568 (600-2)

REIL Rwy 25 and 28R  
HIRL Rwy 10L-28R  
MIRL Rwy 7-25 and 10R-28L

NW-1, 19 NOV 2009 to 17 DEC 2009

NW-1, 19 NOV 2009 to 17 DEC 2009