

ILS or LOC RWY 10L

BILLINGS LOGAN INTL (BIL)

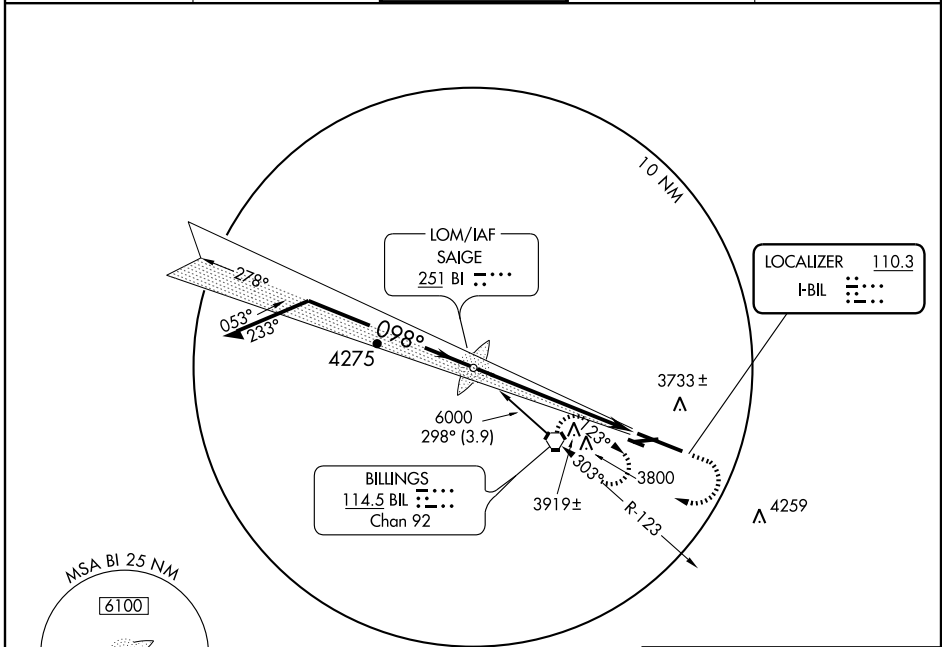
LOC I-BIL 110.3	APP CRS 098°	Rwy Idg 10518 TDZE 3584 Apt Elev 3652
---------------------------	------------------------	--

∇ # RVR 1800 authorized with the use of FD or AP or HUD to DA.

MALSR

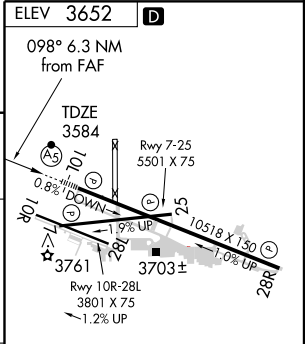
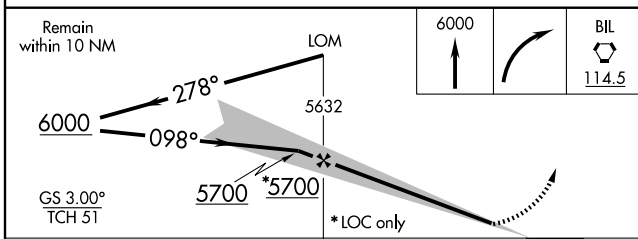
MISSED APPROACH: Climb to 6000, then right turn direct BIL VORTAC and hold.

ATIS 126.3	BILLINGS APP CON 120.5 284.6	BILLINGS TOWER 127.2 257.8	GND CON 121.9	CLNC DEL 121.9
----------------------	--	--------------------------------------	-------------------------	--------------------------



NW-1, 11 MAR 2010 to 08 APR 2010

NW-1, 11 MAR 2010 to 08 APR 2010



CATEGORY	A	B	C	D
S-ILS 10L	# 3784/24 200 (200-½)			
S-LOC 10L	4120/24	536 (500-½)	4120/50 536 (500-1)	4120/60 536 (500-1¼)
CIRCLING	4160-1 508 (600-1)	4180-1 528 (600-1)	4180-1½ 528 (600-1½)	4220-2 568 (600-2)

REIL Rwy 25 and 28R
HIRL Rwy 10L-28R
MIRL Rwy 7-25 and 10R-28L

FAF to MAP 6.3 NM

Knots	60	90	120	150	180
Min:Sec	6:18	4:12	3:09	2:31	2:06