

BLACKSTONE, VIRGINIA

AL-52 (FAA)

RNAV (GPS) RWY 4

BLACKSTONE/ALLEN C. PERKINSON BLACKSTONE AAF (BKT)

APP CRS 058°	Rwy Idg 4632
	TDZE 429
	Apt Elev 439

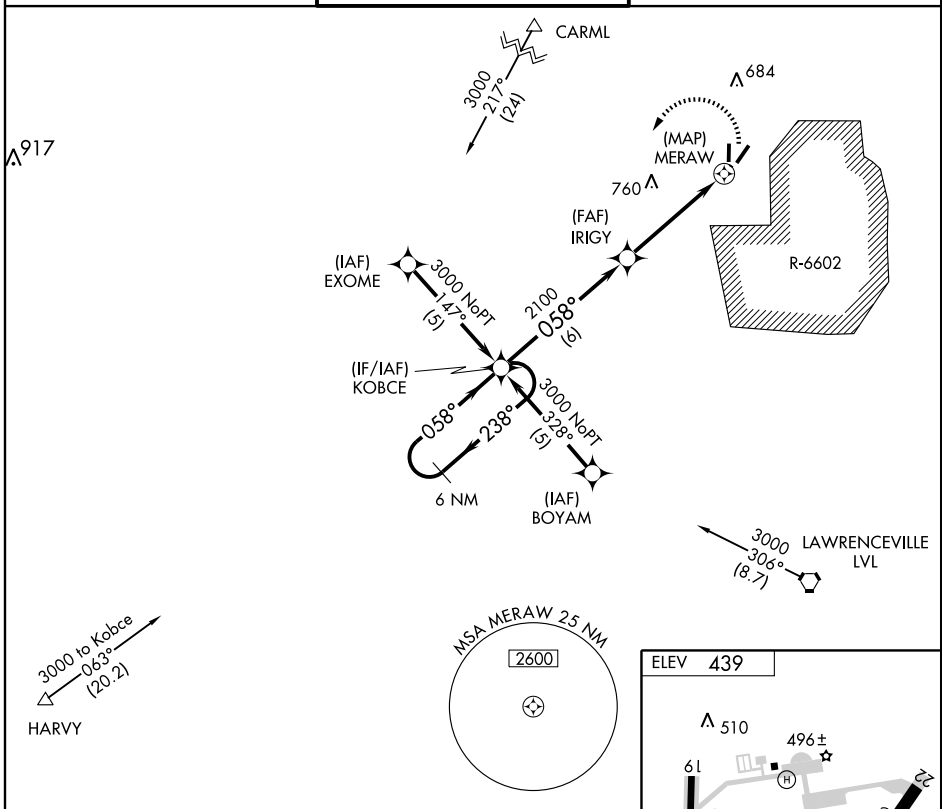
▽ Use Mecklenburg-Brunswick Rgnl altimeter setting.
△ NA Circling NA East of Rwy 4-22. DME/DME RNP-0.3 NA.

MISSED APPROACH: Climbing left turn to 3000 direct KOBCE and hold.

WASHINGTON CENTER
118.75 353.9

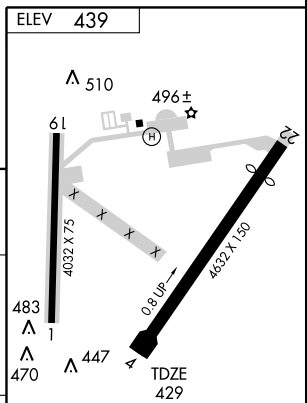
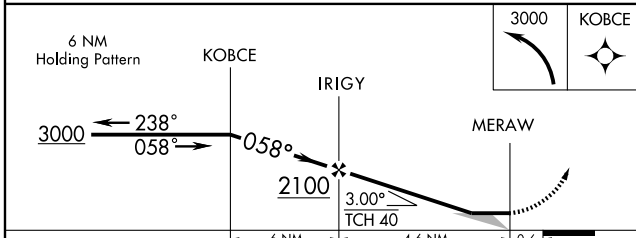
BLACKSTONE TOWER *
126.2 241.0

CTAF **0**
122.95



NE-3, 11 MAR 2010 to 08 APR 2010

NE-3, 11 MAR 2010 to 08 APR 2010



CATEGORY	A	B	C	D
LNAV MDA	940-1	511 (600-1)	940-1½ 511 (600-1½)	NA
CIRCLING	940-1	501 (600-1)	940-1½ 501 (600-1½)	NA

BLACKSTONE, VIRGINIA
 Orig 09015

BLACKSTONE/ALLEN C. PERKINSON BLACKSTONE AAF (BKT)
 37°04'N - 77°57'W

RNAV (GPS) RWY 4

MIRL Rwy 1-19
 MIRL Rwy 4-22 **0**