

# NDB or GPS-A

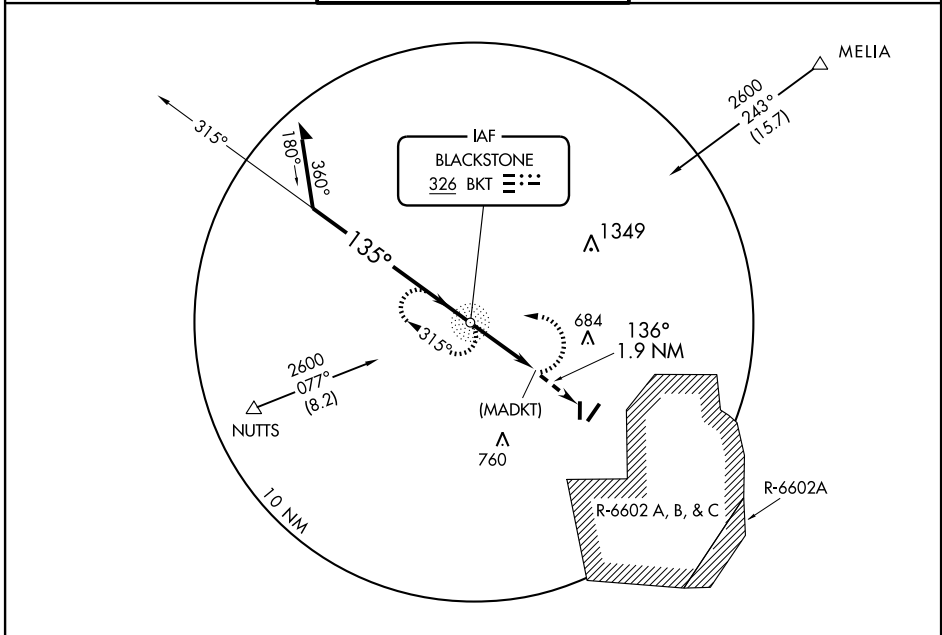
BLACKSTONE/ALLEN C. PERKINSON BLACKSTONE AAF (BKT)

NDB BKT <b>326</b>	APP CRS <b>135°</b>	Rwy Idg TDZE Apt Elev	<b>N/A</b> <b>N/A</b> <b>439</b>
-----------------------	------------------------	-----------------------------	--

▼ Use Mecklenburg-Brunswick Rgnl altimeter setting.  
 ▲ NA Circling not authorized east of Rwy 4-22.  
 Fly visual to airport, 136° - 1.9 NM.

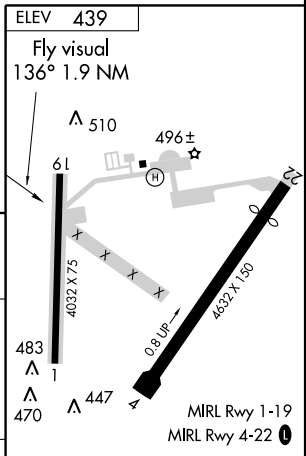
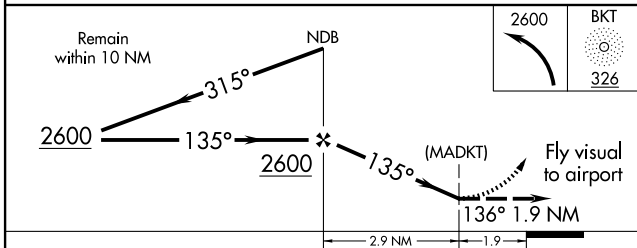
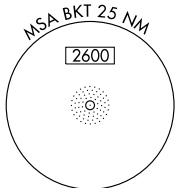
MISSED APPROACH: Climbing left turn to 2600 direct BKT NDB and hold.

WASHINGTON CENTER <b>118.75 353.9</b>	BLACKSTONE TOWER * <b>126.2 241.0</b>	CTAF ① <b>122.95</b>
--	--	-------------------------



NE-3, 11 MAR 2010 to 08 APR 2010

NE-3, 11 MAR 2010 to 08 APR 2010



CATEGORY	A	B	C	D	FAF to MAP 2.9 NM					
CIRCLING	1100-2¼ 661 (700-2¼)			NA	Knots	60	90	120	150	180
					Min:Sec	2:54	1:56	1:27	1:10	0:58

# NDB or GPS-A