

VOR/DME BZN <b>112.4</b> Chan 71	APP CRS <b>101°</b>	Rwy Idg <b>8994</b> TDZE <b>4439</b> Apt Elev <b>4474</b>
--	------------------------	---

# VOR RWY 12

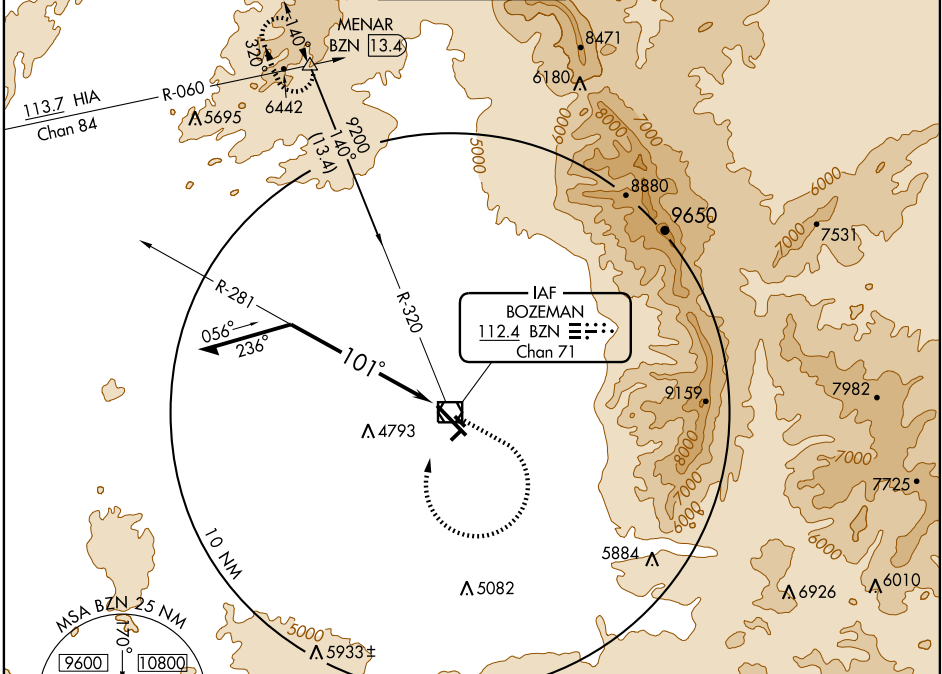
BOZEMAN/GALLATIN FIELD (BZN)

**⚠** Inoperative table does not apply.

**MALSR**  

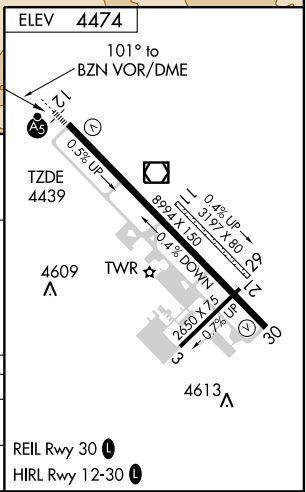

**MISSED APPROACH:** Climb to 5300, then climbing right turn to 9200 via heading 350° to intercept BZN R-320, then via BZN R-320 to MENAR Int and hold.

ATIS <b>135.425</b>	SALT LAKE CENTER <b>132.4 338.3</b>	<b>BOZEMAN TOWER*</b> <b>118.2 (CTAF) 0</b>	GND CON <b>121.8</b>	UNICOM <b>122.95</b>
------------------------	--	--	-------------------------	-------------------------



Remain within 10 NM	*VOR/DME	5300	9200	BZN R-320 112.4	MENAR
---------------------	----------	------	------	-----------------	-------

CATEGORY	A	B	C	D
S-12	5240-1 801 (800-1)	5240-1 ¼ 801 (800-1 ¼)	5240-2 ¼ 801 (800-2 ¼)	5240-2 ½ 801 (800-2 ½)
CIRCLING	5240-1 766 (800-1)	5240-1 ¼ 766 (800-1 ¼)	5240-2 ¼ 766 (800-2 ¼)	5240-2 ½ 766 (800-2 ½)



NW-1, 19 NOV 2009 to 17 DEC 2009

NW-1, 19 NOV 2009 to 17 DEC 2009