

BOZEMAN, MONTANA

AL-59 (FAA)

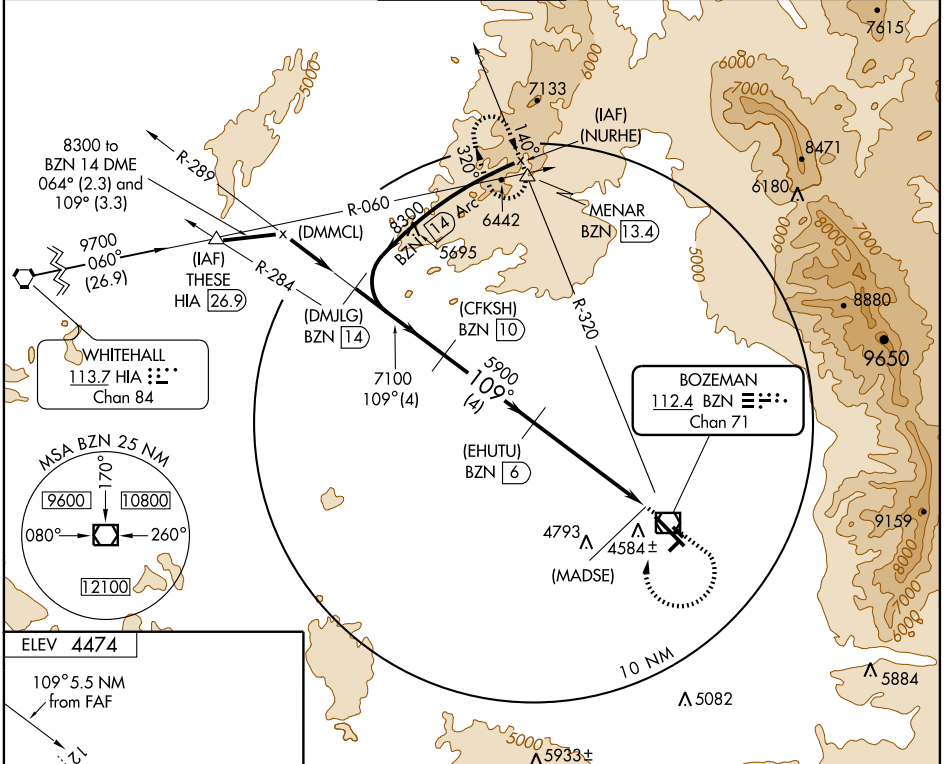
VOR/DME or GPS RWY 12

BOZEMAN/ GALLATIN FIELD (BZN)

VOR/DME BZN 112.4 Chan 71	APP CRS 109°	Rwy Idg 8994 TDZE 4439 Apt Elev 4474
--	------------------------	---

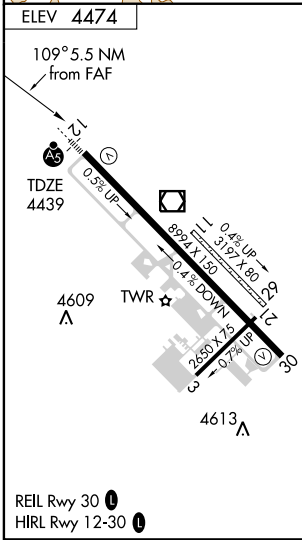
MALSR MISSED APPROACH: Climb to 5300, then a climbing right turn to 9200 via heading 350° to intercept BZN R-320, then via BZN R-320 to MENAR Int and hold.

ATIS 135.425	SALT LAKE CENTER 132.4 338.3	BOZEMAN TOWER* 118.2 (CTAF) 0	GND CON 121.8	UNICOM 122.95
------------------------	--	---	-------------------------	-------------------------



NW-1, 19 NOV 2009 to 17 DEC 2009

NW-1, 19 NOV 2009 to 17 DEC 2009



	(DMJLG) BZN 14	(CFKSH) BZN 10	(EHUTU) BZN 6	(MADSE) BZN 1	(MENAR) BZN 13.4
Procedure Turn NA	8300	7100	5900	5300	9200
	4 NM	4 NM	5 NM	0.5	
Category	A	B	C	D	
S-12	4900-1/2	461 (500-1/2)	4900-3/4 461 (500-3/4)	4900-1 461 (500-1)	
CIRCLING	4940-1	466 (500-1)	4940-1 1/2 466 (500-1 1/2)	5040-2 566 (600-2)	

BOZEMAN, MONTANA
Amdt 2A 09015

45°47'N-111°09'W

BOZEMAN/ GALLATIN FIELD (BZN)

VOR/DME or GPS RWY 12