

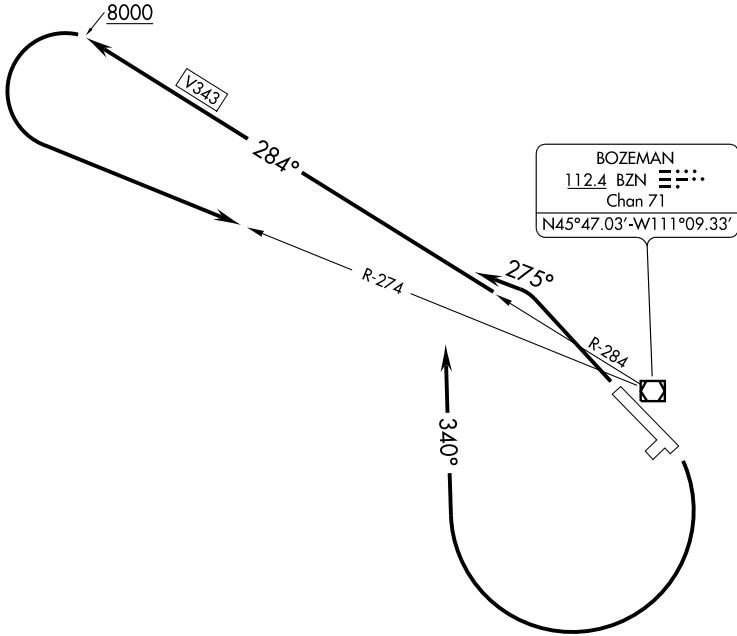
(BZN1.BZN) 08213

SL-59 (FAA)

BOZEMAN/GALLATIN FIELD (BZN)  
BOZEMAN, MONTANA

# BOZEMAN ONE DEPARTURE (OBSTACLE)

ATIS 135.425  
GND CON  
121.8  
BOZEMAN TOWER ★  
118.2 (CTAF)  
SALT LAKE CITY CENTER  
132.4 338.3



NW-1, 19 NOV 2009 to 17 DEC 2009

NW-1, 19 NOV 2009 to 17 DEC 2009

### TAKE-OFF MINIMUMS

Rwy 3, 21: NA - ATC  
Rwy 12, 30: Standard

### TAKE-OFF OBSTACLE NOTES

Rwy 30: Pole 636' from DER, 622' left of centerline, 62' AGL/4452' MSL.

NOTE: Chart not to scale.



### DEPARTURE ROUTE DESCRIPTION

TAKE-OFF RUNWAY 12: Climbing right turn heading 340° to intercept BZN R-284 outbound to 8000. Aircraft departing westbound via V343 climb on course, all others continue climbing left turn to intercept BZN R-274 to BZN VOR/DME, cross BZN VOR/DME at or above MCA or MEA for route of flight.

TAKE-OFF RUNWAY 30: Climbing left turn heading 275° to intercept BZN R-284 outbound to 8000. Aircraft departing westbound via V343 climb on course, all others continue climbing left turn to intercept BZN R-274 to BZN VOR/DME, cross BZN VOR/DME at or above MCA or MEA for route of flight.

# BOZEMAN ONE DEPARTURE (OBSTACLE)

(BZN1.BZN) 08213

BOZEMAN, MONTANA  
BOZEMAN/GALLATIN FIELD (BZN)