

ILS RWY 12

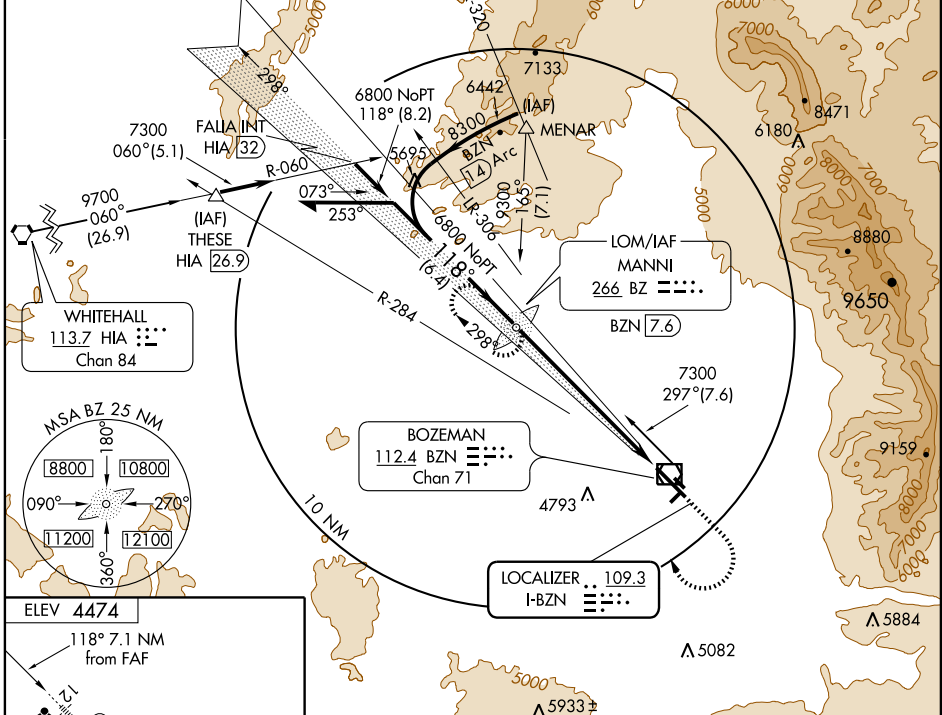
BOZEMAN/GALLATIN FIELD (BZN)

LOC I-BZN 109.3	APP CRS 118°	Rwy ldg 8994
		TDZE 4439
		Apt Elev 4474

Increase S-LOC 12 Cat D. visibility 1/4 mile for operative MALSR.	MALSR	MISSED APPROACH: Climb to 5000, then climbing right turn to 8000 direct BZ LOM and hold.

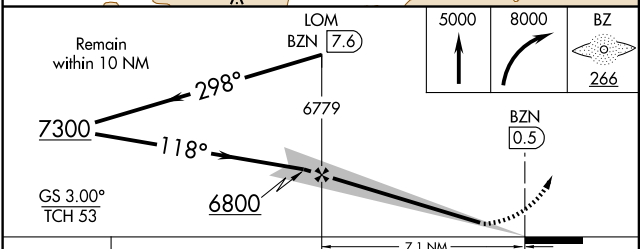
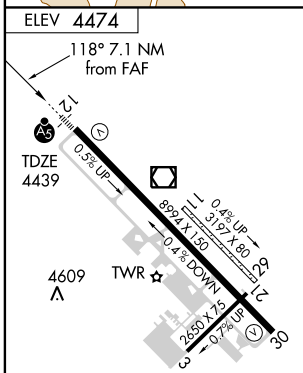
ATIS 135.425	SALT LAKE CENTER 132.4 338.3	BOZEMAN TOWER* 118.2 (CTAF) 0	GND CON 121.8	UNICOM 122.95
------------------------	--	--	-------------------------	-------------------------

ADF REQUIRED



NW-1, 19 NOV 2009 to 17 DEC 2009

NW-1, 19 NOV 2009 to 17 DEC 2009



CATEGORY	A	B	C	D
S-ILS 12	4650-1/2 211 (200-1/2)			
S-LOC 12	4760-1/2 321 (300-1/2)			4760-3/4 321 (300-3/4)
CIRCLING	4940-1 466 (500-1)		4940-1 1/2 466 (500-1 1/2) 5040-2 566 (600-2)	