

(HIA1.HIA) 08213

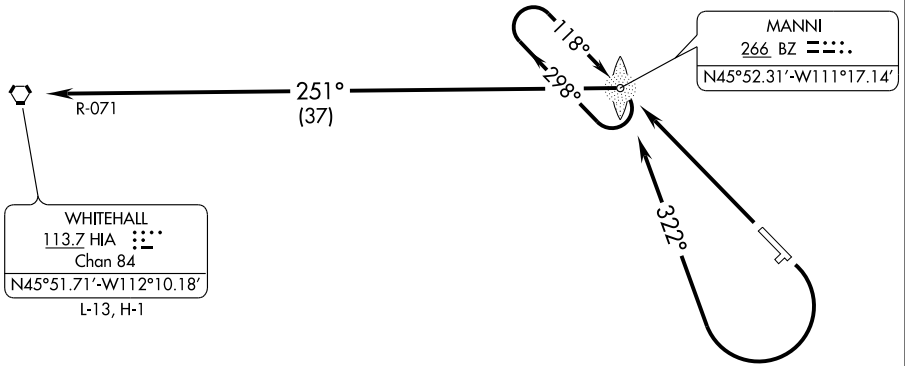
# WHITEHALL ONE DEPARTURE

BOZEMAN/ GALLATIN FIELD (BZN)  
BOZEMAN, MONTANA

SL-59 (FAA)

ATIS 135.425  
GND CON  
121.8  
BOZEMAN TOWER ★  
118.2 (CTAF)  
SALT LAKE CITY CENTER  
132.4 338.3

NW-1, 19 NOV 2009 to 17 DEC 2009



NW-1, 19 NOV 2009 to 17 DEC 2009

NOTE: ADF REQUIRED

### TAKE-OFF MINIMUMS

Rwy 3, 21: NA - ATC.  
Rwy 12: Standard  
Rwy 30: Standard with a minimum climb of 294' per NM to 6500.

### TAKE-OFF OBSTACLE NOTES

Rwy 30: Pole 636' from DER, 622' left of centerline, 62' AGL/4452' MSL.

NOTE: Chart not to scale.



### DEPARTURE ROUTE DESCRIPTION

**TAKE-OFF RUNWAY 12:** Climbing right turn to intercept 322° course to MANNI LOM. Climb in MANNI LOM holding pattern to at or above 8500, then intercept HIA R-071 to HIA VORTAC, cross HIA VORTAC at or above MCA or MEA for route of flight.

**TAKE-OFF RUNWAY 30:** Climbing left turn direct MANNI LOM. Climb in MANNI LOM holding pattern to at or above 8500, then intercept HIA R-071 to HIA VORTAC, cross HIA VORTAC at or above MCA or MEA for route of flight.

# WHITEHALL ONE DEPARTURE

(HIA1.HIA) 08213

BOZEMAN, MONTANA  
BOZEMAN/ GALLATIN FIELD (BZN)