

CARLSBAD, NEW MEXICO

AL-71 (FAA)

VORTAC CNM 116.3 Chan 110	APP CRS 325°	Rwy Idg TDZE Apt Elev	5454 3268 3295
--	------------------------	-----------------------------	---

VOR RWY 32L

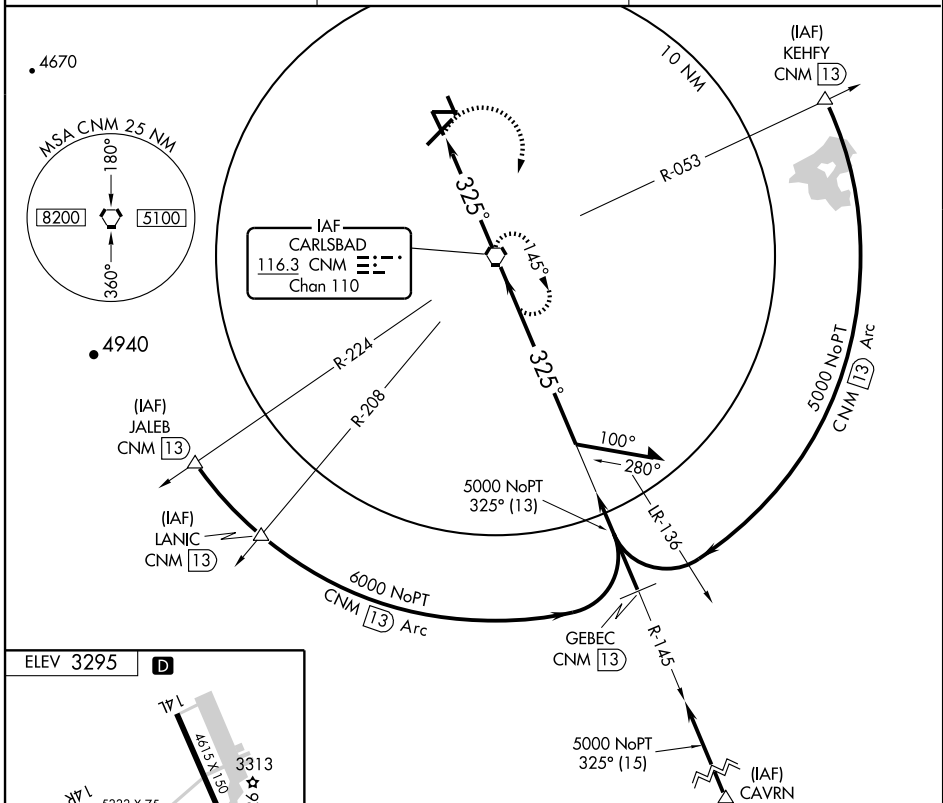
CARLSBAD/ CAVERN CITY AIR TERMINAL (CNM)

MISSED APPROACH: Climbing right turn to 5000 direct CNM VORTAC and hold.

ASOS
118.375

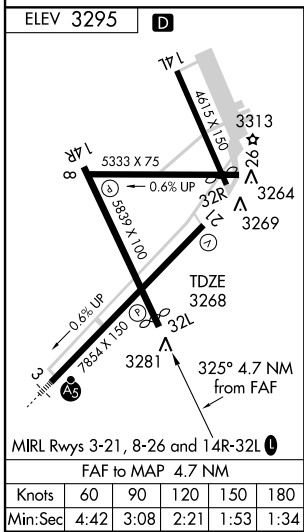
ALBUQUERQUE CENTER
135.875 292.15

UNICOM
122.95 (CTAF)



SW-1, 11 MAR 2010 to 08 APR 2010

SW-1, 11 MAR 2010 to 08 APR 2010



CATEGORY	A		B		C		D	
	3680-1		412 (400-1)		3680-1¼		412 (400-1¼)	
S-32L	3680-1		3760-1		3760-1½		3860-2	
CIRCLING	385 (400-1)		465 (500-1)		465 (500-1½)		565 (600-2)	

CARLSBAD, NEW MEXICO
Amdt 6 08325

CARLSBAD/ CAVERN CITY AIR TERMINAL (CNM)
32°20'N-104°16'W
VOR RWY 32L