

CARLSBAD, NEW MEXICO

AL-71 (FAA)

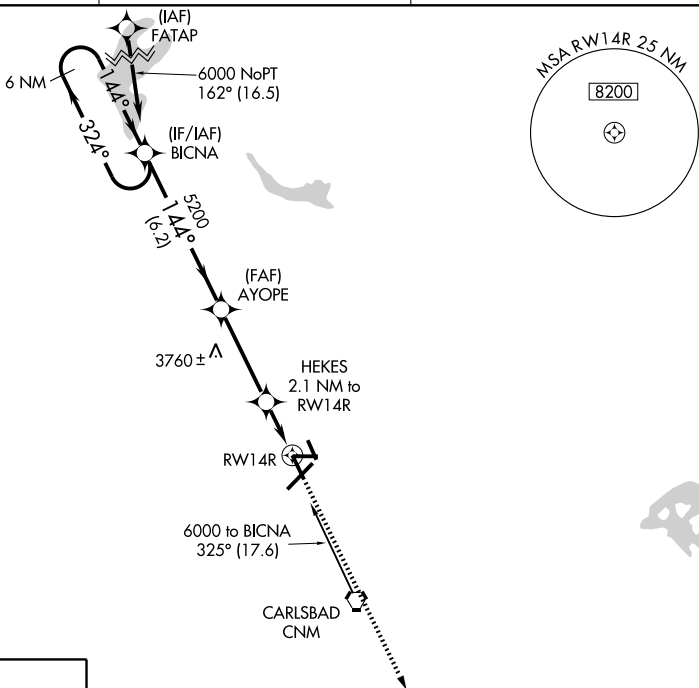
RNAV (GPS) RWY 14R

CARLSBAD/ CAVERN CITY AIR TERMINAL (CNM)

APP CRS 144°	Rwy Idg 5839
	TDZE 3270
	Apt Elev 3295

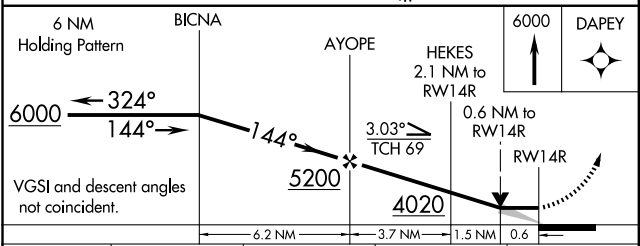
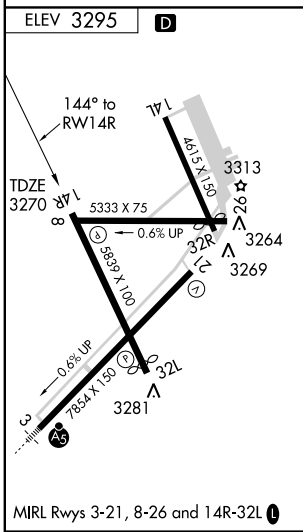
▲ NA	GPS or RNP-0.3 required. DME/DME RNP-0.3 NA.	MISSED APPROACH: Climb to 6000 direct DAPEY WP and hold.
-------------	--	--

ASOS 118.375	ALBUQUERQUE CENTER 135.875 292.15	UNICOM 122.95 (CTAF) 0
------------------------	---	----------------------------------



SW-1, 19 NOV 2009 to 17 DEC 2009

SW-1, 19 NOV 2009 to 17 DEC 2009



CATEGORY	A	B	C	D
LNAV MDA	3580-1 310 (300-1)			
CIRCLING	3680-1 385 (400-1)	3760-1 465 (500-1)	3760-1½ 465 (500-1½)	3860-2 565 (600-2)

CARLSBAD, NEW MEXICO
Orig 08325

CARLSBAD/ CAVERN CITY AIR TERMINAL (CNM)
32°20'N-104°16'W
RNAV (GPS) RWY 14R