

LOC IWA 110.15	APCH CRS 303°	Rwy Idg 10,201	TDZE 1380
		Arpt Elev 1382	

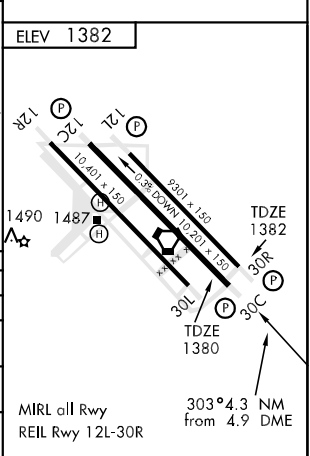
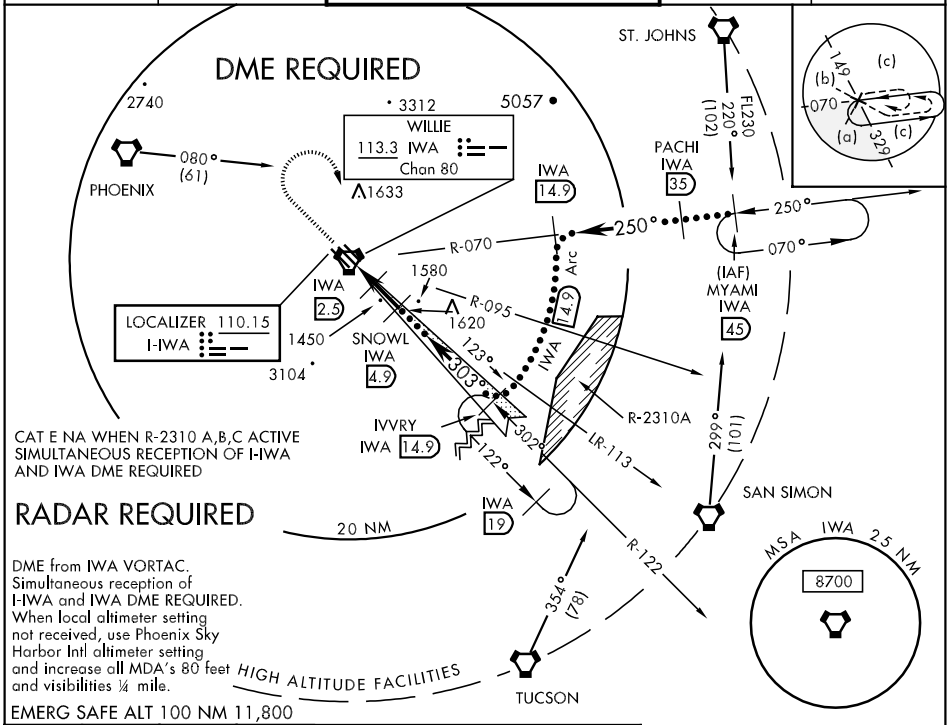
JAL-74 [USAF]

PHOENIX-MESA GATEWAY (KIWA)

▼ *1960 when using Phoenix Sky Harbor Intl altimeter setting.
 † LOC only

MISSED APPROACH: Climb to 2800 then climbing right turn to 5000 direct IWA VORTAC then via IWA R-122 to IVVRY 14.9 DME and hold.

ATIS 133.5 270.275	PHOENIX APP CON 124.9 353.8	GATEWAY TOWER ★ WEST EAST 120.6 (CTAF) 289.4 124.75 379.225	GND CON 128.25 275.8	CLNC DEL 128.25 275.8
------------------------------	---------------------------------------	--	--------------------------------	---------------------------------



SW-4, 19 NOV 2009 to 17 DEC 2009

SW-4, 19 NOV 2009 to 17 DEC 2009