

PHOENIX, ARIZONA

AL-74 (FAA)

# RNAV (GPS) RWY 12R

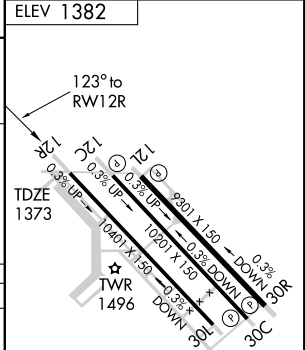
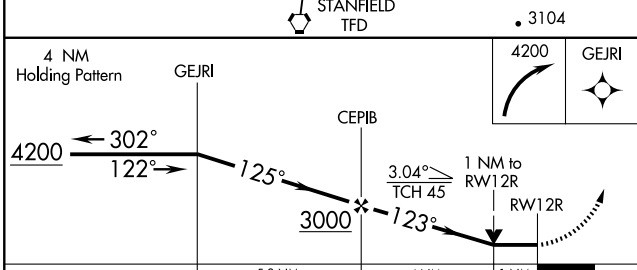
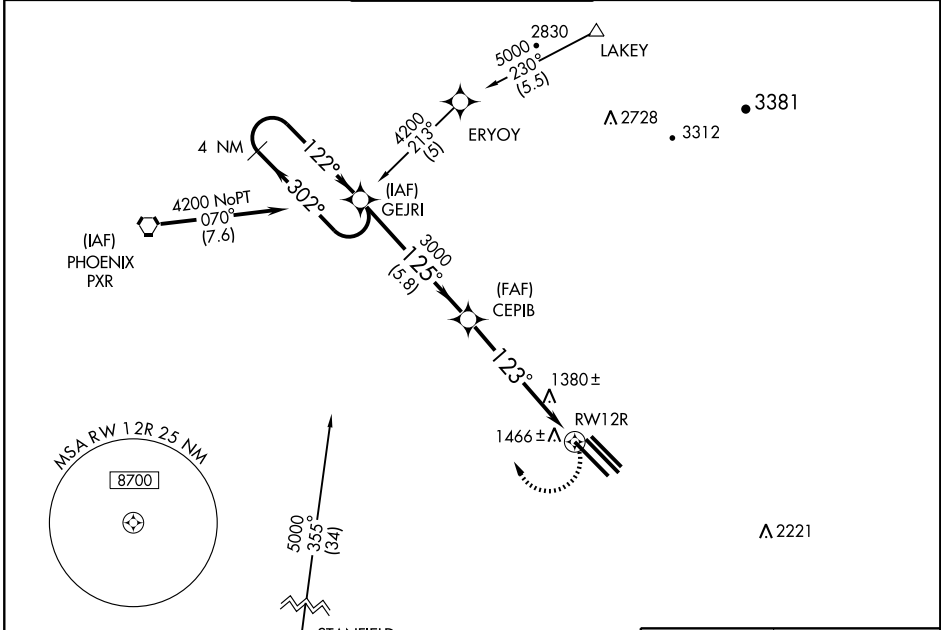
PHOENIX-MESA GATEWAY (IWA)

APP CRS <b>123°</b>	Rwy Idg <b>10401</b>
	TDZE <b>1373</b>
	Apt Elev <b>1382</b>

**⚠** When local altimeter setting not received, use Phoenix Sky Harbor Intl altimeter setting.  
**⚠ NA** VDP NA with Phoenix Sky Harbor Intl altimeter setting. GPS or RNP-0.3 required. DME/DME RNP-0.3 NA.

MISSED APPROACH: Climbing right turn to 4200 direct GEJRI WP and hold.

ATIS <b>133.5 270.275</b>	PHOENIX APP CON <b>124.9 353.8</b>	<b>GATEWAY TOWER *</b> <b>120.6 (CTAF) 289.4 (WEST)</b> <b>124.75 379.225 (EAST)</b>	GND CON <b>128.25 275.8</b>	CLNC DEL <b>135.05</b>
------------------------------	---------------------------------------	--	--------------------------------	---------------------------



CATEGORY	A	B	C	D	E
LNVA MDA	1720-1 347 (400-1)			1720-1¼ 347 (400-1¼)	
CIRCLING	1800-1 418 (500-1)	1840-1 458 (500-1)	1840-1½ 458 (500-1½)	1940-2 558 (600-2)	
PHOENIX SKY HARBOR INTL ALTIMETER SETTING MINIMUMS					
LNVA MDA	1800-1 427 (500-1)	1800-1¼ 427 (500-1¼)		1800-1½	427 (500-1½)
CIRCLING	1880-1 498 (500-1)	1920-1 538 (600-1)	1920-1½ 538 (600-1½)	1940-2 558 (600-2)	2000-2½ 618 (700-2½)

MIRL Rwy 12R-30L  
 HIRL Rwy 12L-30R and 12C-30C  
 REIL Rwy 12L and 30R

SW-4, 19 NOV 2009 to 17 DEC 2009

SW-4, 19 NOV 2009 to 17 DEC 2009

PHOENIX, ARIZONA  
 Orig 0912Z

33°18'N-111°39'W

# PHOENIX-MESA GATEWAY (IWA) RNAV (GPS) RWY 12R