

RNAV (GPS) RWY 30C

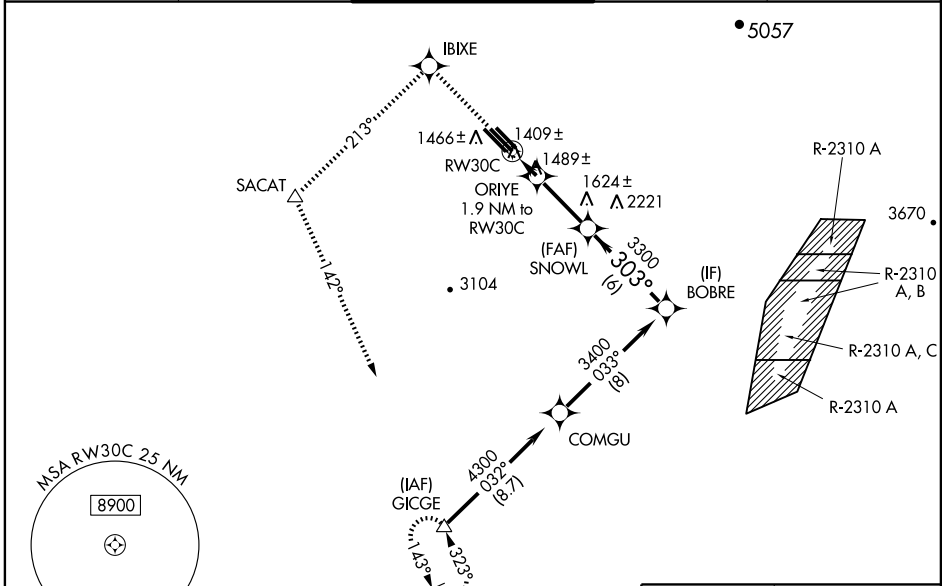
PHOENIX-MESA GATEWAY (IWA)

WAAS CH 62911 W30A	APP CRS 303°	Rwy Idg 10201 TDZE 1380 Apt Elev 1382
--	------------------------	--

⚠ For uncompensated Baro-VNAV systems, LNAV/VNAV NA below -17°C (2°F) or above 46°C (114°F). DME/DME RNP-0.3 NA.
⚠ When local altimeter setting not received, use Phoenix Sky Harbor Intl altimeter setting and increase all DA/MDA 80 feet and increase LPV, LNAV/VNAV, LNAV all Cats visibility ¼ mile, increase circling Cat A/B/C visibility ¼ mile, Cat E ½ mile. VDP and Baro-VNAV NA when using Phoenix Sky Harbor Intl altimeter setting.

MISSED APPROACH: Climb to 5000 direct IBIXE and via 213° track to SACAT and 142° track to GICGE and hold.

ATIS 133.5 270.275	PHOENIX APP CON 124.9 353.8	GATEWAY TOWER * 120.6 (CTAF) 289.4 (WEST) 124.75 379.225 (EAST)	GND CON 128.25 275.8	CLNC DEL 135.05
------------------------------	---------------------------------------	---	--------------------------------	---------------------------



SW-4, 19 NOV 2009 to 17 DEC 2009

SW-4, 19 NOV 2009 to 17 DEC 2009

5000 ↑	IBIXE	213° track	SACAT △	142° track	GICGE △	VGSI and RNAV glidepath not coincident.	BOBRE
*LNAV only							
	RW30C	ORIYE 1.9 NM to RW30C	SNOWL 3300	3300	3400	303°	Procedure Turn NA
	*1.2 NM to RW30C			2020	3300		GS 3.00°
	1.2 NM	0.7	3.9 NM	6 NM			TCH 41
CATEGORY	A	B	C	D	E		
LPV DA			1630-1	250 (300-1)			
LNAV/VNAV DA			1680-1	300 (300-1)			
LNAV MDA	1800-1	420 (500-1)	1800-1½	420 (500-1½)	1800-1½	1800-1½	
	418 (500-1)	458 (500-1)	1840-1	1840-1½	1940-2	420 (500-1½)	
CIRCLING	1800-1	1840-1	1840-1½	1940-2	1980-2	598 (600-2)	
	418 (500-1)	458 (500-1)	458 (500-1½)	558 (600-2)	598 (600-2)		

