

VORTAC IWA 113.3 Chan 80	APP CRS 302°	Rwy Idg 30C TDZE Apt Elev	10201 1380 1382	Rwy Idg 30R TDZE Apt Elev	9301 1382 1382
---------------------------------------	------------------------	---------------------------------	--	---------------------------------	---

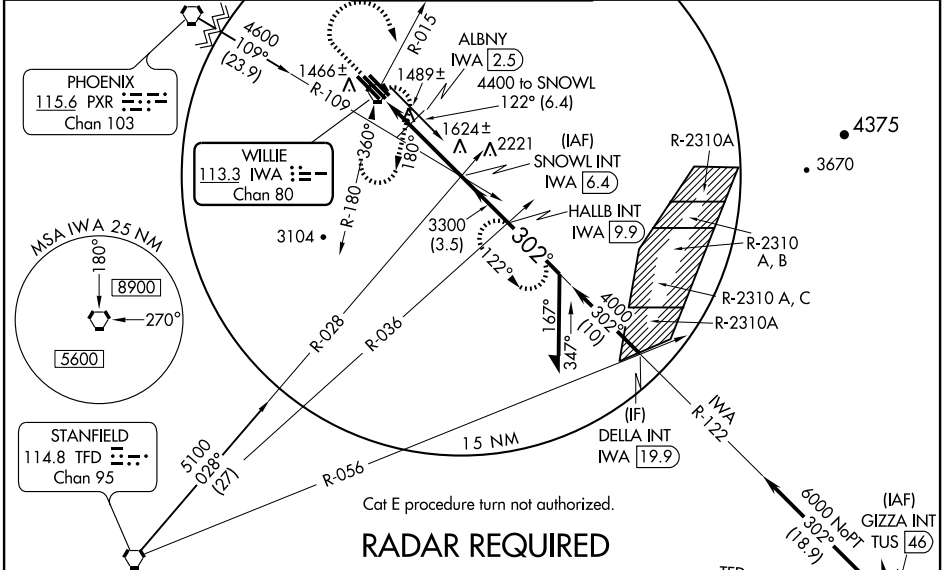
VOR or TACAN RWY 30C

PHOENIX-MESA GATEWAY (IWA)

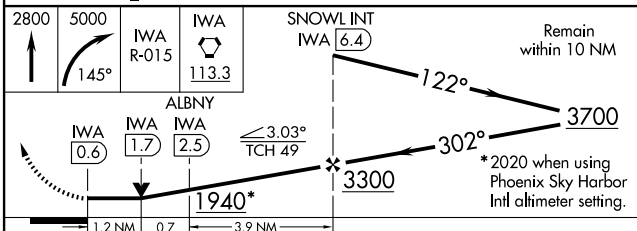
⚠ When local altimeter setting not received, use Phoenix Sky Harbor Intl altimeter setting and increase all MDA 80 feet, increase S-30C, SIDESTEP 30R all Cats visibility ¼ mile, circling Cats A/B/C visibility ¼ mile, Cat E ½ mile.

MISSED APPROACH: Climb to 2800 then climbing right turn to 5000 via heading 145° and IWA VORTAC R-015 to IWA VORTAC and hold, continue climb-in-hold to 5000 (TACAN aircraft continue via IWA VORTAC R-122 to HALLB INT/IWA 9.9 DME and hold, continue climb-in-hold to 5000, hold SE, LT, 302° inbound).

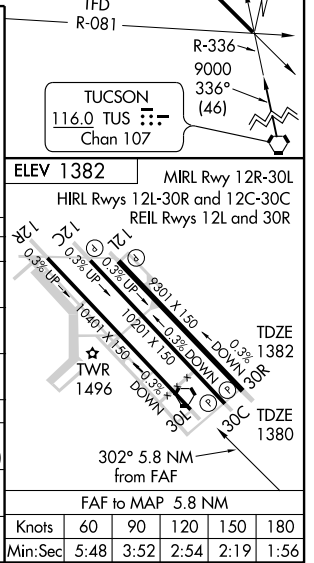
ATIS 133.5 270.275	PHOENIX APP CON 124.9 353.8	GATEWAY TOWER * 120.6 (CTAF) 289.4 (WEST) 124.75 379.225 (EAST)	GND CON 128.25 275.8	CLNC DEL 135.05
------------------------------	---------------------------------------	---	--------------------------------	---------------------------



RADAR REQUIRED



CATEGORY	A		C	D	E
	A	B			
S-30C	1940-1	560 (600-1)	1940-1½ 560 (600-1½)	1940-1¾ 560 (600-1¾)	1940-2 560 (600-2)
SIDESTEP 30R	1940-1	558 (600-1)	1940-1½ 558 (600-1½)	1940-2	558 (600-2)
CIRCLING	1940-1	558 (600-1)	1940-1½ 558 (600-1½)	1940-2	1980-2 598 (600-2)
DME MINIMUMS					
S-30C	1800-1	420 (500-1)	1800-1¼ 420 (500-1¼)	1800-1½ 420 (500-1½)	
SIDESTEP 30R	1800-1	418 (500-1)	1800-1½ 418 (500-1½)	1800-2	
CIRCLING	1800-1 418 (500-1)	1840-1 458 (500-1)	1840-1½ 458 (500-1½)	1940-2	1980-2



SW-4, 11 MAR 2010 to 08 APR 2010

SW-4, 11 MAR 2010 to 08 APR 2010