

WAAS CH <b>73009</b> <b>W09A</b>	APP CRS <b>085°</b>	Rwy Idg TDZE <b>6143</b> Apt Elev <b>6159</b>	<b>7985</b>
--	------------------------	---	-------------

# RNAV (GPS) RWY 9

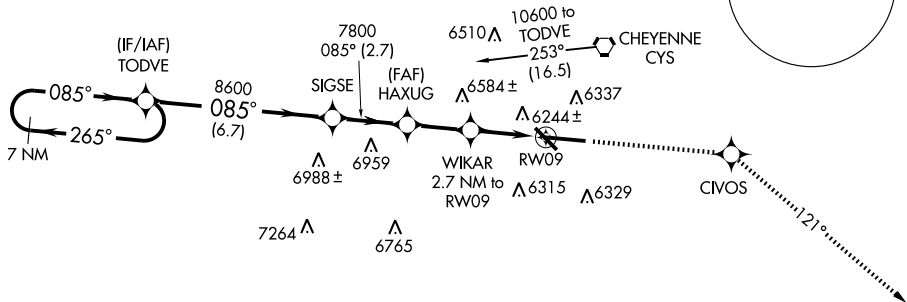
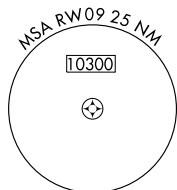
CHEYENNE RGNL/JERRY OLSON FIELD (CYS)

**⚠** For uncompensated Baro-VNAV systems, LNAV/VNAV NA below -27°C (-16°F) or above 36°C (96°F).  
**⚠** DME/DME RNP -0.3 NA. Visibility reduction by helicopters NA.  
 ASR/PAR When local altimeter setting not received, use Laramie altimeter setting and increase all DA 251 feet, all MDA 260 feet, and all visibilities ¾ mile. VDP and Baro-VNAV NA when using Laramie altimeter setting.

MISSED APPROACH: Climb to 8500 direct CIVOS and via 121° track to HAMER and hold.

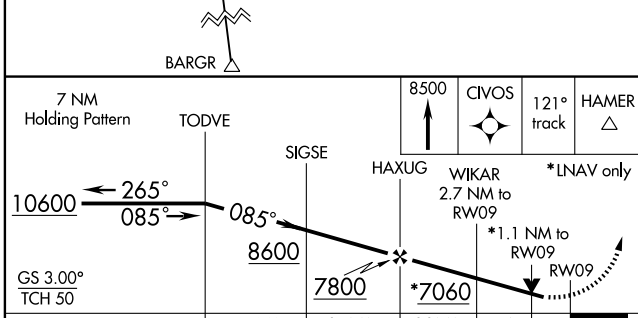
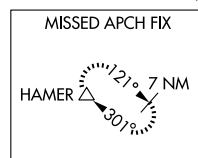
ATIS <b>134.425 278.3</b>	CHEYENNE APP CON <b>124.55 263.075</b>	CHEYENNE TOWER * <b>118.7 (CTAF) 0 257.8</b>	GND CON <b>121.9 254.275</b>	UNICOM <b>122.95</b>
------------------------------	---	---	---------------------------------	-------------------------

Procedure NA for arrivals at CYS VORTAC via airway radials 267 CW 292, and for arrivals at BARGR via V4 southeastbound.



NW-1, 11 MAR 2010 to 08 APR 2010

NW-1, 11 MAR 2010 to 08 APR 2010



ELEV 6159 **D**

REIL Rwy 9, 13, and 31 **⓪**  
 HIRL Rwy 9-27 **⓪**  
 MIRL Rwy 13-31 **⓪**

CATEGORY	A	B	C	D
LPV DA		6473-1¼	330 (400-1¼)	
LNAV/VNAV DA		6542-1½	399 (400-1½)	
LNAV MDA	6540-1	397 (400-1)		6540-1¼ 397 (400-1¼)
CIRCLING	6660-1	501 (600-1)	6660-1½ 501 (600-1½)	6720-2 561 (600-2)