

CHILDRESS, TEXAS

AL-82 (FAA)

VORTAC CDS 117.6 Chan 123	APP CRS 352°	Rwy Idg TDZE Apt Elev	5949 1954 1954
---	------------------------	-----------------------------	---

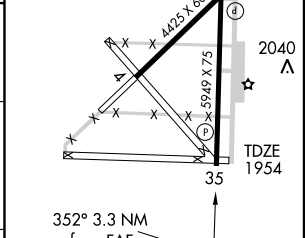
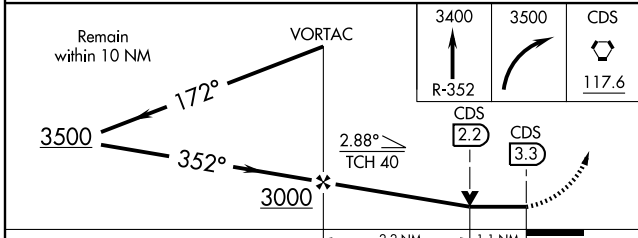
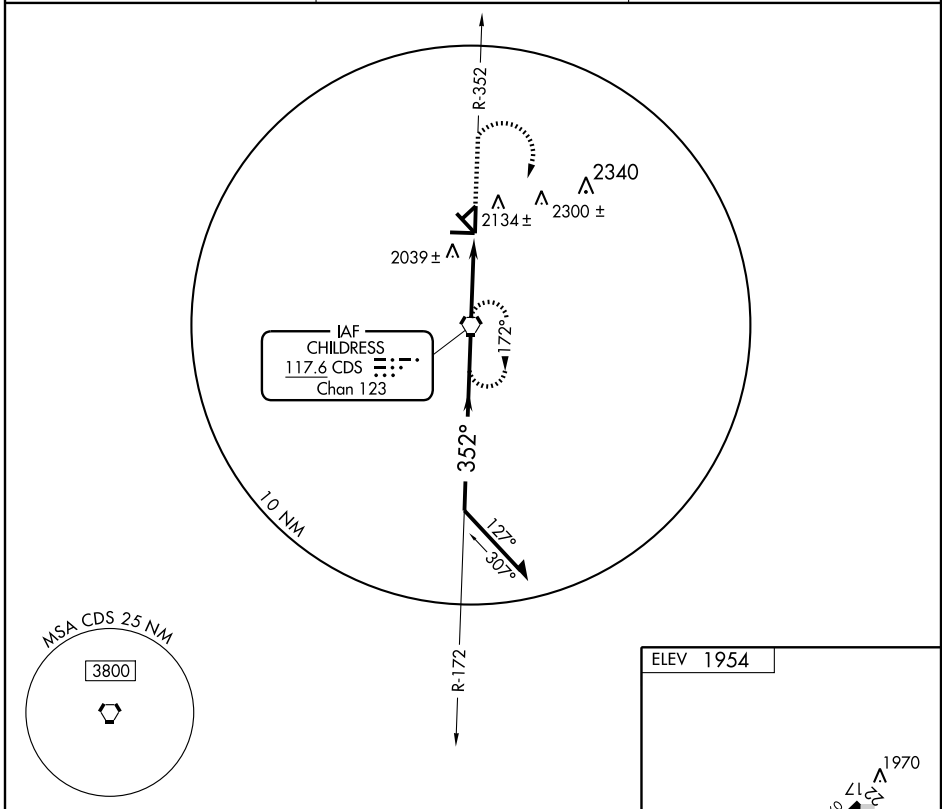
VOR RWY 35

CHILDRESS MUNI (CDS)

▼ When local altimeter setting not received, use Altus/Quartz Mountain Rgnl altimeter setting and increase all MDA 200 feet, and all visibilities ½ mile.
▲ VDP NA when using Altus/Quartz Mountain Rgnl altimeter setting.

MISSED APPROACH: Climb to 3400 via CDS VORTAC R-352 then climbing right turn to 3500 direct CDS VORTAC and hold.

ASOS 135.125	FORT WORTH CENTER 133.5 350.35	UNICOM 122.8 (CTAF)
------------------------	--	-------------------------------



CATEGORY	A	B	C	D
S-35	2340-1 386 (400-1)			2340-1¼ 386 (400-1¼)
CIRCLING	2500-1	546 (600-1)	2500-1½ 546 (600-1½)	2520-2 566 (600-2)

MIRL Rwy 17-35	FAF to MAP 3.3 NM				
Knots	60	90	120	150	180
Min:Sec	3:18	2:12	1:39	1:19	1:06

CHILDRESS, TEXAS
Amdt 10 09015

34°26'N-100°17'W

CHILDRESS MUNI (CDS) VOR RWY 35

SC-2, 11 MAR 2010 to 08 APR 2010

SC-2, 11 MAR 2010 to 08 APR 2010