

NDB RWY 21L

CINCINNATI MUNI AIRPORT-LUNKEN FIELD (LUK)

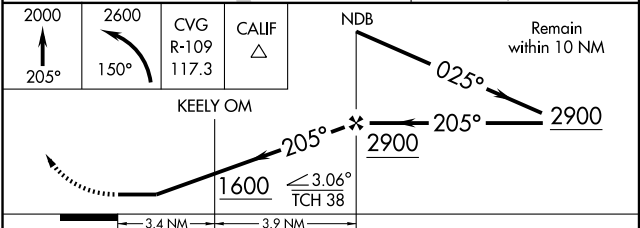
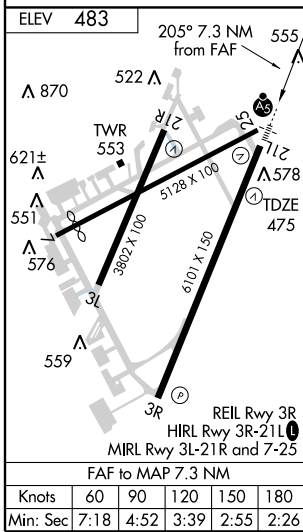
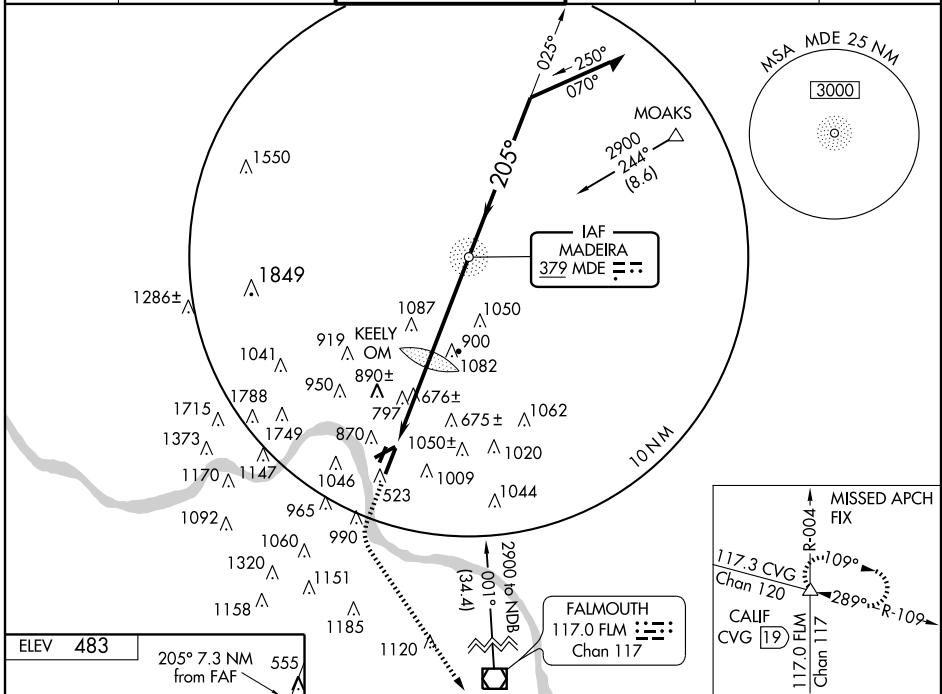
NDB MDE 379	APP CRS 205°	Rwy ldg TDZE Apt Elev	6101 475 483
-----------------------	------------------------	-----------------------------	---

⚠ Inoperative table does not apply to S-21L Cat A. KEELY OM Minimums: For inoperative MALSRL increase S-21L Cat B visibility to RVR 6000. When local altimeter setting not received, use Cincinnati/Northern Kentucky Intl altimeter setting and increase all MDA 100 feet, increase KEELY OM Minimums S-21L Cats C and D, circling Cats A, B & D visibility ¼ mile, and increase circling Cat C visibility ½ mile.

MALSRL
AS

MISSED APPROACH: Climb to 2000 via heading 205° then climbing left turn to 2600 via heading 150° and via CVG VORTAC R-109 to CALIF INT and hold.

ATIS 120.25	CINCINNATI APP CON 121.0 257.725	LUNKEN TOWER ★ 118.7 (CTAF) 0 257.8	GND CON 121.9	CLNC DEL 121.9	UNICOM 122.95
-----------------------	--	---	-------------------------	--------------------------	-------------------------



CATEGORY	A	B	C	D
S-21L	1600/60	1125 (1200-1¼)	1600-2½ 1125 (1200-2½)	1600-2¾ 1125 (1200-2¾)
CIRCLING	1600-1¼ 1117 (1200-1¼)	1600-1½ 1117 (1200-1½)	1600-3	1117 (1200-3)
KEELY OM MINIMUMS				
S-21L	1240/40	765 (800-¾)	1240-1¾ 765 (800-¾)	1240-2¼ 765 (800-2¼)
CIRCLING	1300-1 817 (900-1)	1360-1¼ 877 (900-1¼)	1360-2½ 877 (900-2½)	1360-2¾ 877 (900-2¾)

NDB RWY 21L

EC-2, 19 NOV 2009 to 17 DEC 2009

EC-2, 19 NOV 2009 to 17 DEC 2009