

# NDB RWY 25

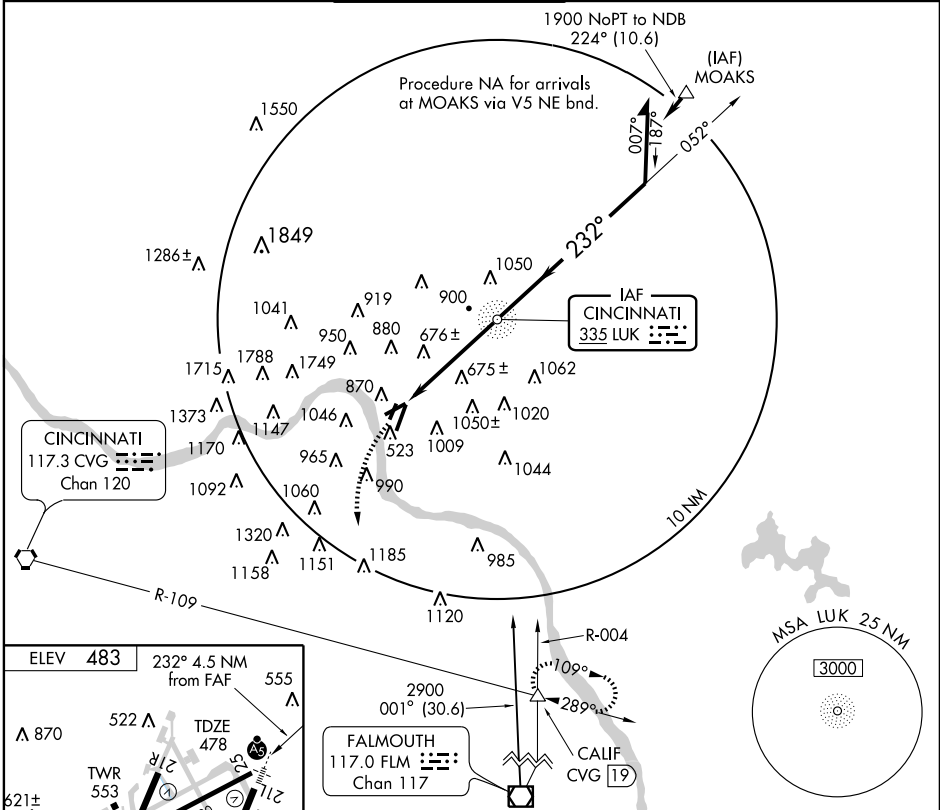
CINCINNATI MUNI AIRPORT-LUNKEN FIELD (LUK)

NDB LUK <b>335</b>	APP CRS <b>232°</b>	Rwy Idg TDZE Apt Elev	<b>5128</b> <b>478</b> <b>483</b>
-----------------------	------------------------	-----------------------------	---

**▼** If local altimeter setting not received, use Cincinnati/Northern Kentucky Intl altimeter setting and increase all MDA's 100 feet.  
**▲** Visibility reduction by helicopters NA.

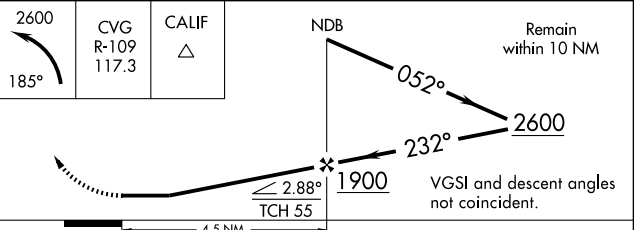
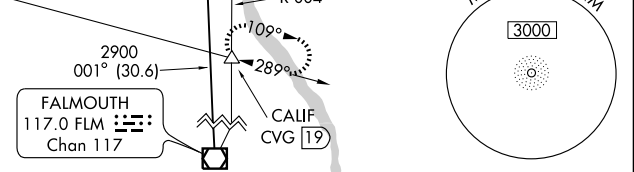
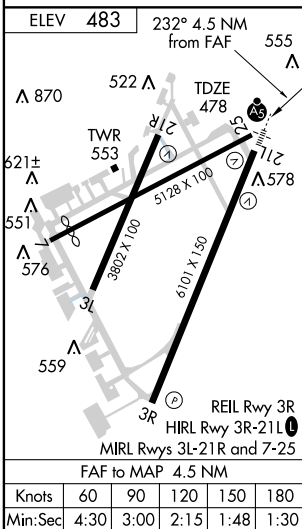
MISSED APPROACH: Climbing left turn to 2600 via heading 185° and CVG VORTAC R-109 to CAUF Int and hold.

ATIS <b>120.25</b>	CINCINNATI APP CON <b>121.0 257.725</b>	LUNKEN TOWER ★ <b>118.7 (CTAF) 257.8</b>	GND CON <b>121.9</b>	CLNC DEL <b>121.9</b>	UNICOM <b>122.95</b>
-----------------------	--	---	-------------------------	--------------------------	-------------------------



EC-2, 19 NOV 2009 to 17 DEC 2009

EC-2, 19 NOV 2009 to 17 DEC 2009



CATEGORY	A	B	C	D
S-25	1320 - 1 842 (900-1)	1320 - 1 ¼ 842 (900-1 ¼)	1320 - 2 ½ 842 (900-2 ½)	1320 - 2 ¾ 842 (900-2 ¾)
CIRCLING	1320 - 1 837 (900-1)	1360 - 1 ¼ 877 (900-1 ¼)	1360 - 2 ½ 877 (900-2 ½)	1360 - 2 ¾ 877 (900-2 ¾)

Knots	60	90	120	150	180
Min:Sec	4:30	3:00	2:15	1:48	1:30