

RNAV (GPS) RWY 21L

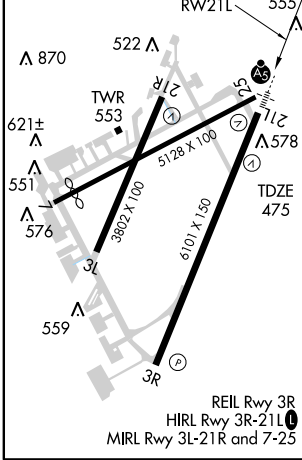
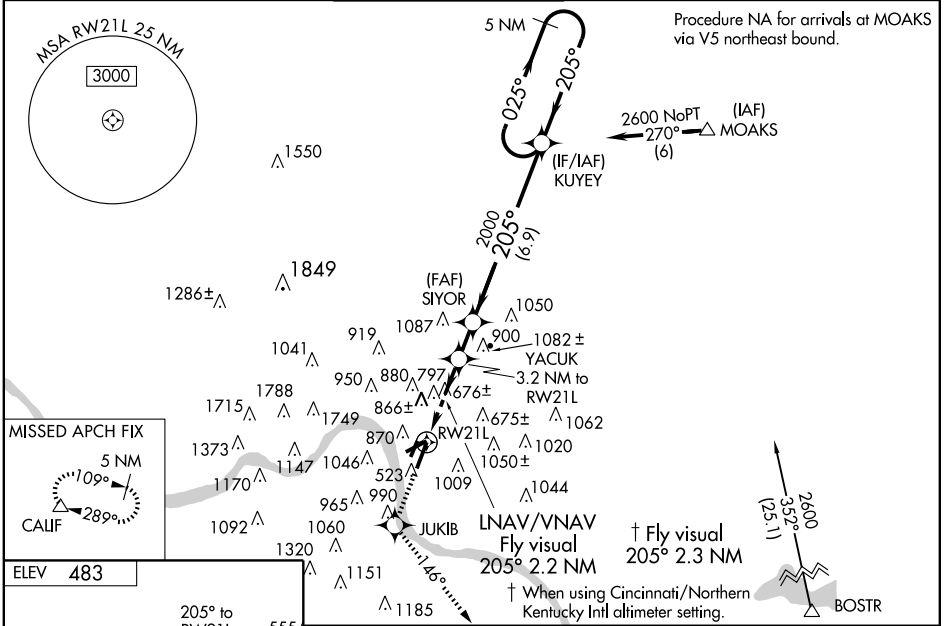
CINCINNATI MUNI AIRPORT-LUNKEN FIELD (LUK)

WAAS CH 42511 W21A	APP CRS 205°	Rwy Idg TDZE Apt Elev	6101 475 483
---------------------------------	------------------------	-----------------------------	---

⚠ DME/DME RNP-0.3 NA. Visibility reduction by helicopters NA. Baro-VNAV and VDP NA when using Cincinnati/Northern Kentucky Intl altimeter setting. For uncompensated Baro-VNAV systems, LNAV/VNAV NA below -15°C (5°F) or above 47°C (116°F). When local altimeter setting not received, use Cincinnati/Northern Kentucky Intl altimeter setting and increase all DA 86 feet, all MDA 100 feet, and increase LPV all Cats, LNAV/VNAV Cats C and D, LNAV Cat B, and Circling Cats B & D visibility ¼ mile, increase LNAV Cat C and Circling Cat C visibility ½ mile. For inoperative MALS, increase LPV all Cats visibility ½ mile. Inoperative table does not apply to LNAV/VNAV.

MALS
⚠ MISSED APPROACH:
Climb to 2600 direct JUKIB and via 146° track to CALIF and hold.

ATIS 120.25	CINCINNATI APP CON 121.0 257.725	LUNKEN TOWER ★ 118.7 (CTAF) 257.8	GND CON 121.9	CLNC DEL 121.9	UNICOM 122.95
-----------------------	--	---	-------------------------	--------------------------	-------------------------



ELEV 483	205° to RWY 21L	555	2600	146° track	CALIF	↑ When using Cincinnati/Northern Kentucky Intl altimeter setting.	5 NM Holding Pattern
621±	522	551	576	559	578	TDZE 475	
↑ Fly visual 205° 2.3 NM	↑ Fly visual 205° 2.2 NM	↑ Fly visual 205° 2.3 NM	↑ Fly visual 205° 2.3 NM	↑ Fly visual 205° 2.3 NM	↑ Fly visual 205° 2.3 NM	↑ Fly visual 205° 2.3 NM	↑ Fly visual 205° 2.3 NM
1.9 NM to RWY 21L	3.2 NM to RWY 21L	1.9 NM to RWY 21L	1.3 NM to RWY 21L	1.4 NM to RWY 21L	6.9 NM to RWY 21L	1.9 NM to RWY 21L	1.3 NM to RWY 21L

CATEGORY	A	B	C	D
LPV DA		834/40	359 (400-¾)	
LNAV/VNAV DA	1230-2	755 (800-2)	1230-2¼ 755 (800-2¼)	1230-2½ 755 (800-2½)
LNAV MDA	1120/40	645 (700-¾)	1120/60 645 (700-1¼)	1120-1½ 645 (700-1½)
CIRCLING	1300-1 817 (900-1)	1360-1¼ 877 (900-1¼)	1360-2½ 877 (900-2½)	1360-2¾ 877 (900-2¾)

EC-2, 19 NOV 2009 to 17 DEC 2009

EC-2, 19 NOV 2009 to 17 DEC 2009