

WAAS CH <b>86701</b> <b>W25A</b>	APP CRS <b>246°</b>	Rwy Idg TDZE <b>478</b> Apt Elev <b>483</b>	<b>5128</b> <b>478</b> <b>483</b>
--	------------------------	---	---

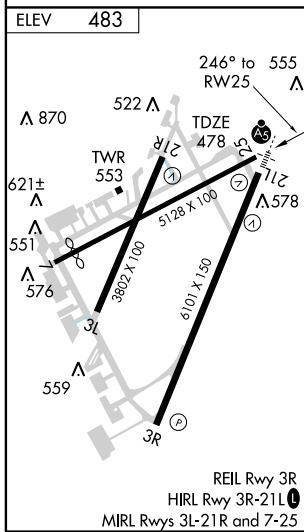
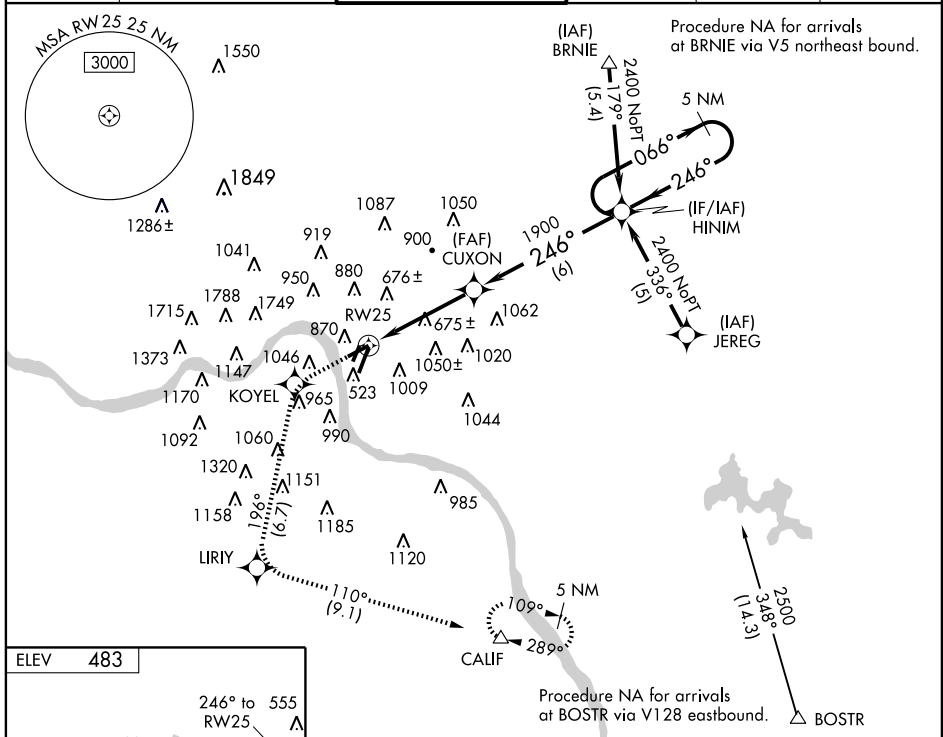
# RNAV (GPS) RWY 25

CINCINNATI MUNI AIRPORT-LUNKEN FIELD (LUK)

**▼** DME/DME RNP-0.3 NA. If local altimeter setting not received, use Cincinnati/Northern Kentucky Intl altimeter setting and increase all DAs/MDAs 100 feet. Visibility reduction by helicopter NA.

**▲** MISSED APPROACH: Climb to 2600 direct KOYEL and left turn via 196° track to LIRIY, and via 110° track to CALIF and hold.

ATIS <b>120.25</b>	CINCINNATI APP CON <b>121.0 257.725</b>	LUNKEN TOWER ★ <b>118.7 (CTAF) 0 257.8</b>	GND CON <b>121.9</b>	CLNC DEL <b>121.9</b>	UNICOM <b>122.95</b>
-----------------------	--	---	-------------------------	--------------------------	-------------------------



ELEV 483	246° to RW25	555	2600	KOYEL	196° track	LIRIY	CALIF	HINIM	5 NM Holding Pattern
VGSI and RNAV glidepath not coincident.									
CUXON									
RW25									
4.3 NM									
6 NM									
066° → 2400									
← 246°									
GS 3.00° TCH 45									
CATEGORY	A	B	C	D					
LPV DA	875-1½ 397 (400-1½)								
LNAV/VNAV DA	NA								
LNAV MDA	1160-1	682 (700-1)	1160-2	682 (700-2)	1160-2½	682 (700-2½)			
CIRCLING	1300-1	817 (900-1)	1360-1¼	877 (900-1¼)	1360-2½	877 (900-2½)	1360-2¾	877 (900-2¾)	

EC-2, 19 NOV 2009 to 17 DEC 2009

EC-2, 19 NOV 2009 to 17 DEC 2009