

LOC/DME I-LUK 110.9 Chan 46	APP CRS 025°	Rwy Idg TDZE Apt Elev	6101 482 483
---	------------------------	-----------------------------	---

LOC BC RWY 3R

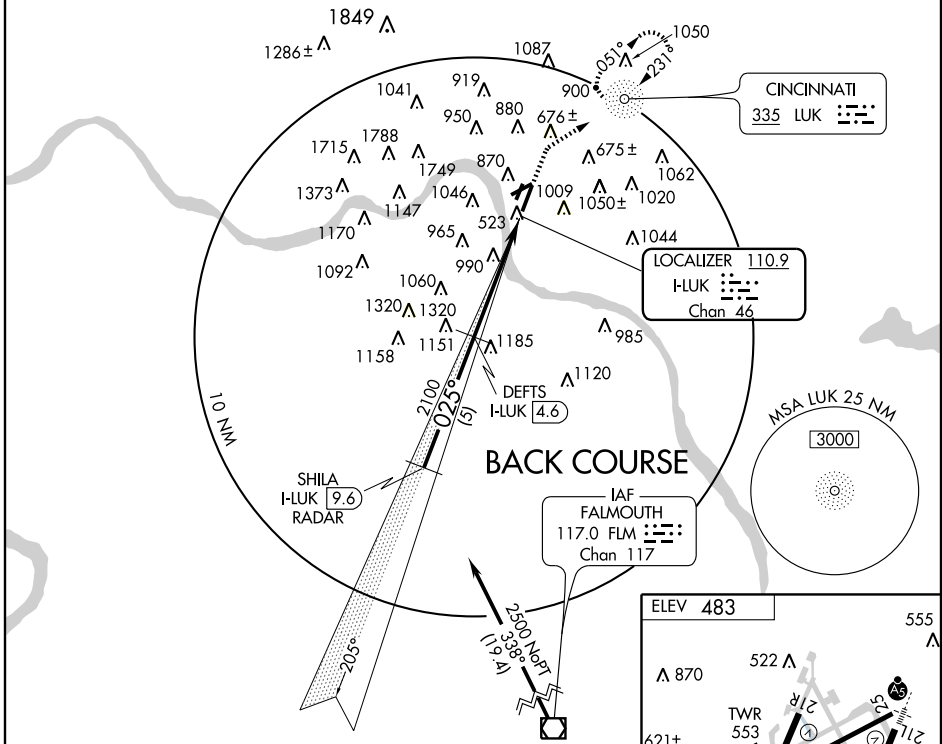
CINCINNATI MUNI AIRPORT-LUNKEN FIELD (LUK)

▼ LOC back course unusable beyond 10 NM.
▲ LOC back course unusable 15 degrees left and right of course within 10 NM of threshold.

MISSED APPROACH: Climb to 1500 then climbing right turn to 2800 direct LUK NDB and hold.

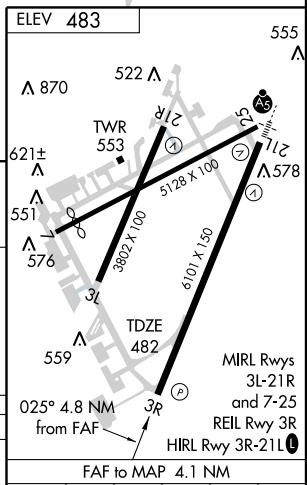
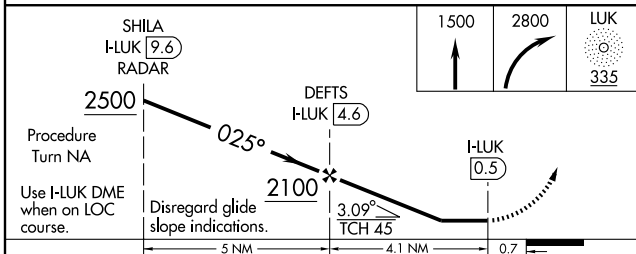
ATIS 120.25	CINCINNATI APP CON 121.0 257.725	LUNKEN TOWER ★ 118.7 (CTAF) 257.8	GND CON 121.9	CLNC DEL 121.9	UNICOM 122.95
-----------------------	--	---	-------------------------	--------------------------	-------------------------

DME or RADAR and ADF REQUIRED



EC-2, 19 NOV 2009 to 17 DEC 2009

EC-2, 19 NOV 2009 to 17 DEC 2009



CATEGORY	A	B	C	D
S-3R	1240-1 758 (800-1)	1240-1¼ 758 (800-1¼)	1240-2¼ 758 (800-2¼)	1240-2½ 758 (800-2½)
CIRCLING	1300-1 816 (900-1)	1360-1¼ 876 (900-1¼)	1360-2½ 876 (900-2½)	1360-2¾ 876 (900-2¾)

FAF to MAP 4.1 NM					
Knots	60	90	120	150	180
Min:Sec	4:06	2:44	2:03	1:38	1:22

LOC BC RWY 3R