

WAAS CH 86701 W25A	APP CRS 246°	Rwy Idg TDZE 478 Apt Elev 483	5128 478 483
--	------------------------	---	---

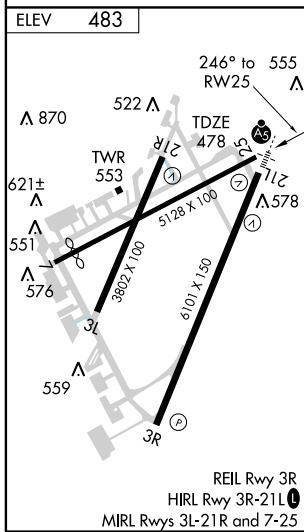
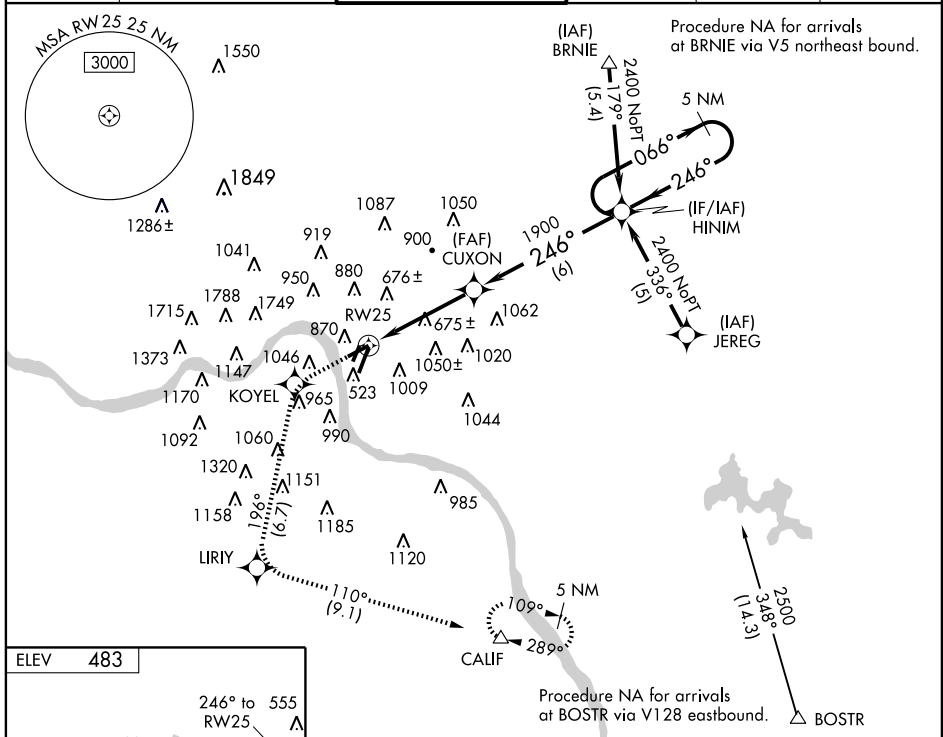
RNAV (GPS) RWY 25

CINCINNATI MUNI AIRPORT-LUNKEN FIELD (LUK)

▼ DME/DME RNP-0.3 NA. If local altimeter setting not received, use Cincinnati/Northern Kentucky Intl altimeter setting and increase all DAs/MDAs 100 feet. Visibility reduction by helicopter NA.

▲ MISSED APPROACH: Climb to 2600 direct KOYEL and left turn via 196° track to LIRIY, and via 110° track to CALIF and hold.

ATIS 120.25	CINCINNATI APP CON 121.0 257.725	LUNKEN TOWER ★ 118.7 (CTAF) 0 257.8	GND CON 121.9	CLNC DEL 121.9	UNICOM 122.95
-----------------------	--	---	-------------------------	--------------------------	-------------------------



ELEV 483	246° to RWY 25	555	2600	KOYEL	196° track	LIRIY	CALIF	HINIM	5 NM Holding Pattern
VGSI and RNAV glidepath not coincident.									
				CUXON		RWY 25		2400	
				1900		066°		246°	
				4.3 NM		6 NM		GS 3.00° TCH 45	
CATEGORY	A		B		C		D		
LPV DA	875-1½ 397 (400-1½)								
LNAV/VNAV DA	NA								
LNAV MDA	1160-1	682 (700-1)		1160-2		682 (700-2)		1160-2½ 682 (700-2½)	
CIRCLING	1300-1	1360-1¼ 817 (900-1)		1360-1¼ 877 (900-1¼)		1360-2½ 877 (900-2½)		1360-2¾ 877 (900-2¾)	

EC-2, 11 MAR 2010 to 08 APR 2010

EC-2, 11 MAR 2010 to 08 APR 2010