

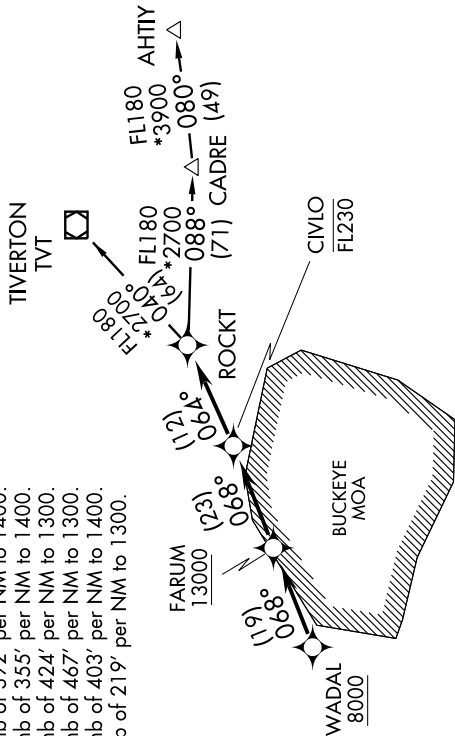
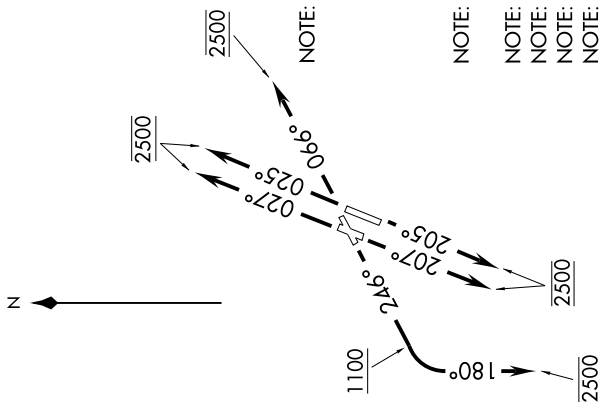
ROCKT THREE DEPARTURE (RNAV)

EC-2, 19 NOV 2009 to 17 DEC 2009

ATIS 120.25  
LUNKEN GND CON  
121.9  
LUNKEN CLNC DEL  
121.9  
LUNKEN TOWER\*  
118.7 (CTAF) 257.8  
CINCINNATI DEP CON  
121.0 257.725

TAKE-OFF MINIMUMS:

- Rwy 3L: Standard with minimum climb of 392' per NM to 1400.
- Rwy 3R: Standard with minimum climb of 355' per NM to 1400.
- Rwy 7: Standard with minimum climb of 424' per NM to 1300.
- Rwy 21R: Standard with minimum climb of 467' per NM to 1300.
- Rwy 21L: Standard with minimum climb of 403' per NM to 1400.
- Rwy 25: 600-2 3/4 with minimum climb of 219' per NM to 1300.



NOTE: Departure procedure limited to aircraft with the following destination airports and departure times:

- Anytime - ABE, AGC, ALB, AYP, BDL, BKL, BOS, BWI, CAK, CGF, CLE, INN, LPR, MDT, MHT, PHL, PIT, PNE, PVD, PWM, TTN, SWF, UNV, and overseas flights. LGA, between 1000-1800 UTC.

NOTE: If unable to accept ATC climb rates and crossing restrictions, advise ATC on initial contact.

NOTE: DME/DME/IRU or GPS Required

NOTE: RADAR REQUIRED

NOTE: RNAV 1

NOTE: Transponder code will be issued via PDC or Cincinnati CLNC DEL.

NOTE: Accelerate to 250 KIAS, if unable, advise ATC.

NOTE: TIVERTON TRANSITION (ROCKT3.TVT) limited to aircraft landing BKL, CAK, CLE, CGF, INN and LPR.

NOTE: For Non-GPS equipped aircraft: CVG and FLM DMEs must be operational.

NOTE: Chart not to scale.

(NARRATIVE ON FOLLOWING PAGE)