


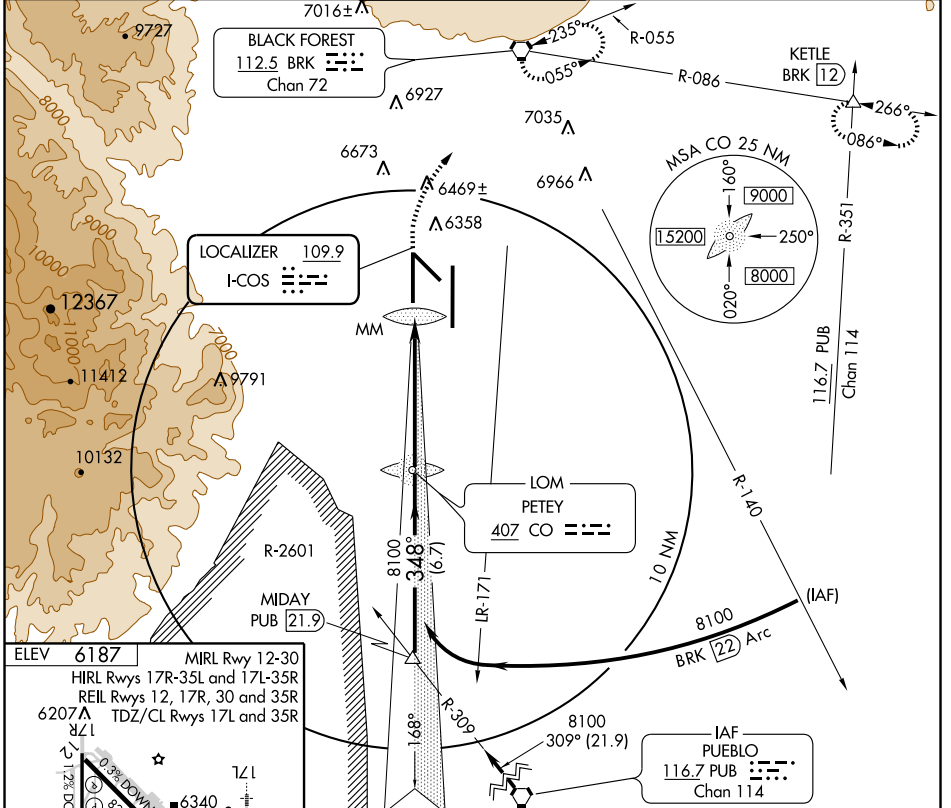
# ILS or LOC RWY 35L

COLORADO SPRINGS/CITY OF COLORADO SPRINGS MUNI (COS)

LOC I-COS <b>109.9</b>	APP CRS <b>348°</b>	Rwy Idg TDZE Apt Elev	<b>11022</b> <b>6075</b> <b>6187</b>
---------------------------	------------------------	-----------------------------	--

<p><b>⚠</b> Radar monitoring required when R-2601 in use.  <b>⚠</b> Cat D S-LOC 35L visibility increased to RVR 5000 for inoperative ALSF. *RVR 1800 authorized with the use of FD or AP or HUD to DA.</p>	<p>MALSR  </p>	<p>MISSED APPROACH: Climb to 8000, then climbing right turn to 9000 direct BRK VORTAC and hold. (TACAN only aircraft continue to KETLE 12 DME and hold E, LT, 266° inbound.)</p>
--	---	--

<p>ATIS <b>125.0 254.3</b></p>	<p>SPRINGS APP CON <b>118.5 239.025</b></p>	<p>SPRINGS TOWER <b>133.15 335.55 (EAST)</b> <b>119.9 360.6 (WEST)</b></p>	<p>GND CON <b>121.7 348.6</b></p>	<p>CLNC DEL <b>134.45 363.125</b></p>
------------------------------------	---	--	---------------------------------------	---



# ILS or LOC RWY 35L

SW-1, 19 NOV 2009 to 17 DEC 2009

SW-1, 19 NOV 2009 to 17 DEC 2009