

RNAV (GPS) RWY 17R

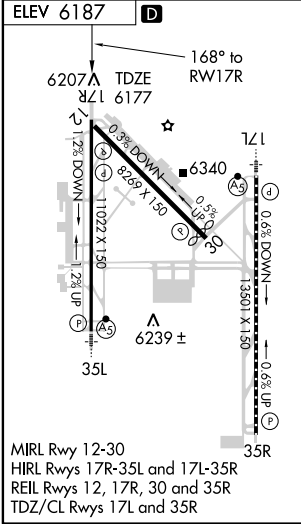
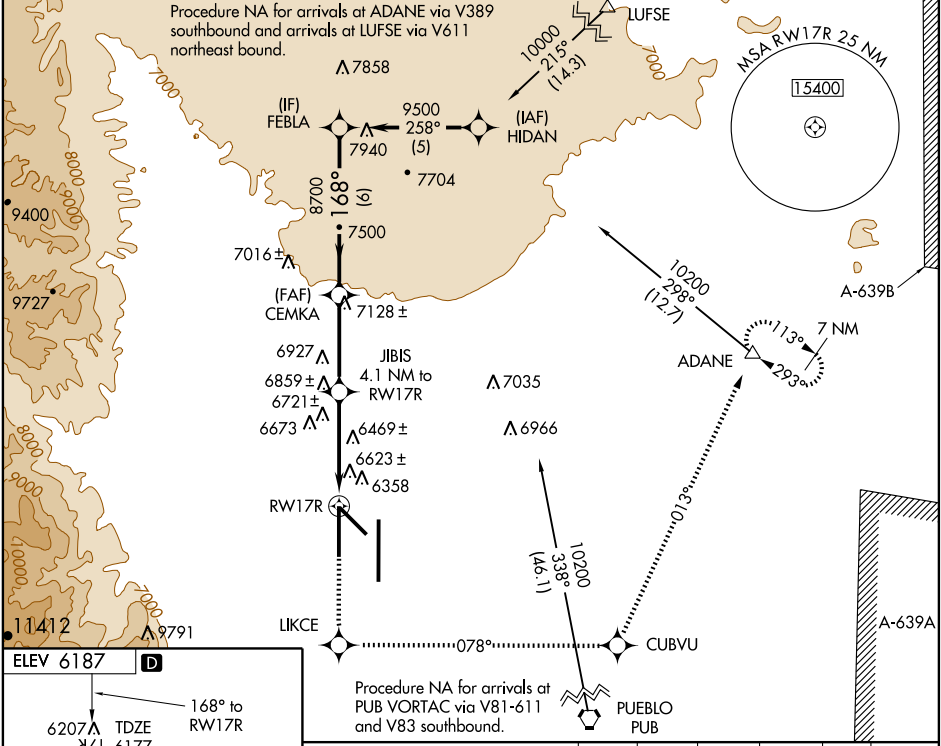
COLORADO SPRINGS/CITY OF COLORADO SPRINGS MUNI (COS)

WAAS CH 72800 W17A	APP CRS 168°	Rwy Idg TDZE 6177 Apt Elev 6187	11022
---------------------------------	------------------------	---	--------------

⚠ DME/DME RNP-0.3 NA.
⚠ For uncompensated Baro-VNAV systems, LNAV/VNAV NA below -27°C (-16°F) or above 37°C (99°F).

MISSED APPROACH: Climb to 10200 direct LIKCE and left turn via 078° track to CUBVU and 013° track to ADANE and hold.

ATIS 125.0 254.3	SPRINGS APP CON 118.5 239.025	SPRINGS TOWER 133.15 335.55 (EAST) 119.9 360.6 (WEST)	GND CON 121.7 348.6	CLNC DEL 134.45 363.125
----------------------------	---	---	-------------------------------	-----------------------------------



FEBLA	10200	LIKCE	CUBVU	ADANE
9500	↑	078° track	013° track	△
Procedure Turn NA		JIBIS 4.1 NM to RW17R	*2.3 NM to RW17R	*LNAV only
GS 3.00°				
TCH 59				
	6 NM	3.5 NM	1.8	2.3
CATEGORY	A	B	C	D
LPV DA	6537-1¼ 360 (400-1¼)			
LNAV/VNAV DA	6742-2 565 (600-2)			
LNAV MDA	6980-1 803 (800-1)	6980-1¼ 803 (800-1¼)	6980-2¼ 803 (800-2¼)	6980-2½ 803 (800-2½)
CIRCLING	6980-1 793 (800-1)	6980-1¼ 793 (800-1¼)	6980-2¼ 793 (800-2¼)	6980-2½ 793 (800-2½)

SW-1, 11 MAR 2010 to 08 APR 2010

SW-1, 11 MAR 2010 to 08 APR 2010