

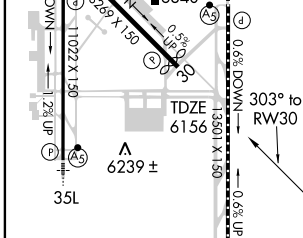
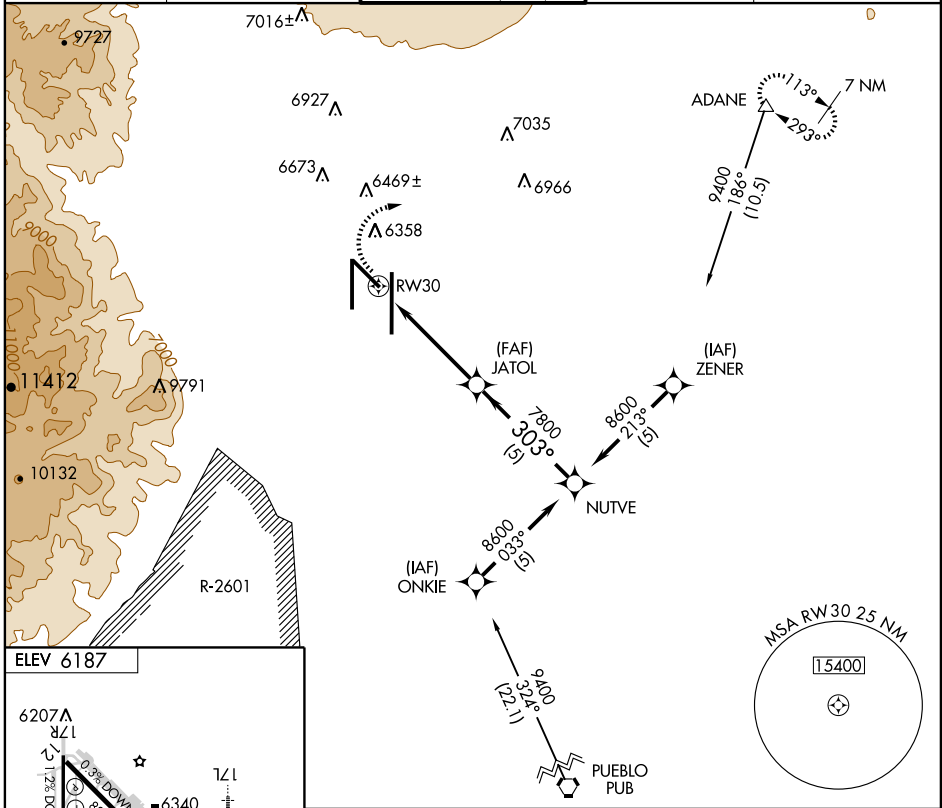
RNAV (GPS) RWY 30

COLORADO SPRINGS/CITY OF COLORADO SPRINGS MUNI (COS)

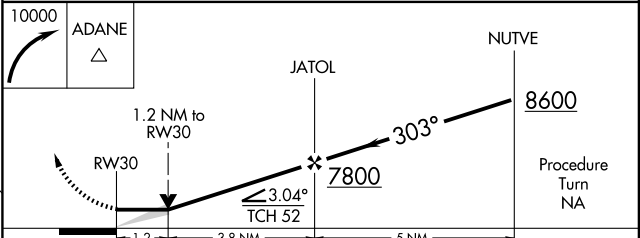
APP CRS 303°	Rwy Idg 7914
	TDZE 6156
	Apt Elev 6187

DME/DME RNP-0.3 NA.	MISSED APPROACH: Climbing right turn to 10000 direct ADANE and hold.
---------------------	--

ATIS 125.0 254.3	SPRINGS APP CON 118.5 239.025	SPRINGS TOWER 133.15 335.55 (EAST) 119.9 360.6 (WEST)	GND CON 121.7 348.6	CLNC DEL 134.45 363.125
----------------------------	---	---	-------------------------------	-----------------------------------



MIRL Rwy 12-30
HIRL Rws 17R-35L and 17L-35R
REIL Rws 12, 17R, 30 and 35R
TDZ/CL Rws 17L and 35R



CATEGORY	A	B	C	D
LNVA MDA	6580-1	424 (400-1)	6580-1¼	424 (400-1¼)
CIRCLING	6740-1	553 (600-1)	6740-1½ 553 (600-1½)	6800-2 613 (700-2)

RNAV (GPS) RWY 30

SW-1, 19 NOV 2009 to 17 DEC 2009

SW-1, 19 NOV 2009 to 17 DEC 2009