

RNAV (GPS) RWY 35R

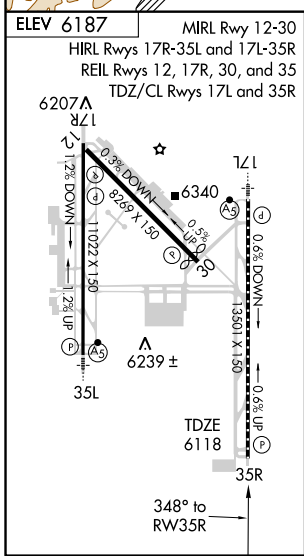
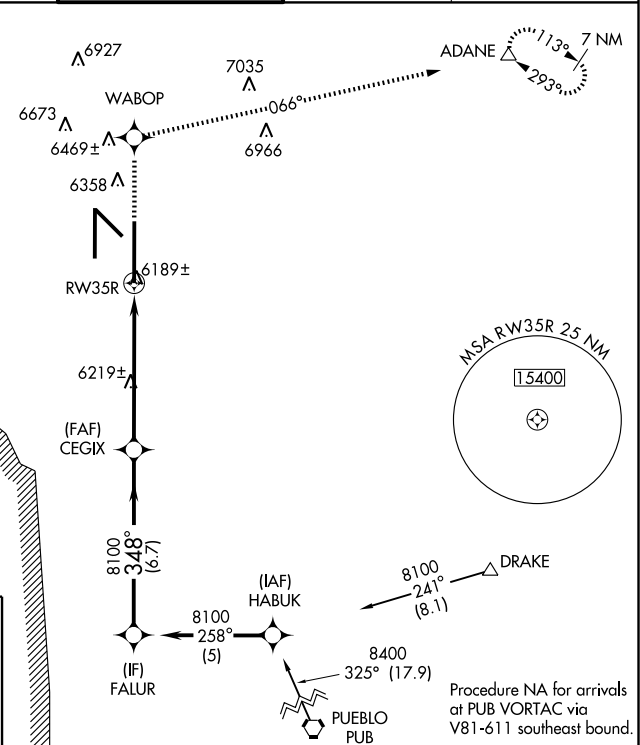
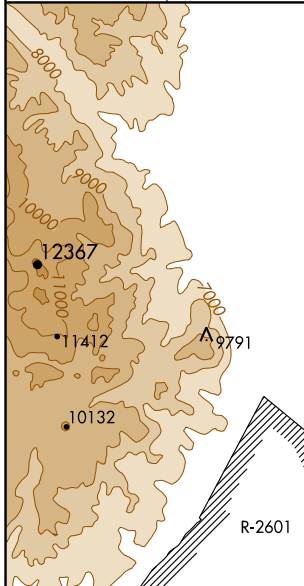
COLORADO SPRINGS/CITY OF COLORADO SPRINGS MUNI (COS)

WAAS CH 53602 W35A	APP CRS 348°	Rwy Idg 13501 TDZE 6118 Apt Elev 6187
--	------------------------	--

⚠ Baro-VNAV NA when using Centennial altimeter setting. If local altimeter setting not received, use Centennial altimeter setting and increase all DAs/MDAs 160 feet. For uncompensated Baro-VNAV systems, LNAV/VNAV NA below -27°C (-16°F) or above 37°C (98°F). DME/DME RNP -0.3 NA. VDP NA when using Centennial altimeter setting.

MISSED APPROACH: Climb to 10000 direct WABOP and via 066° track to ADANE and hold, continue climb-in-hold to 10000.

ATIS 125.0 254.3	SPRINGS APP CON 118.5 239.025	SPRINGS TOWER 133.15 335.55 (EAST) 119.9 360.6 (WEST)	GND CON 121.7 348.6	CLNC DEL 134.45 363.125
----------------------------	---	---	-------------------------------	-----------------------------------



10000	WABOP	066° track	ADANE	VGSi and RNAV glidepath not coincident.	
	CEGIX	FALUR	Procedure Turn NA	8100	GS 3.00° TCH 55
*LNAV only	*1 NM to RW35R	348°	8100		
	1 NM	5 NM	6.7 NM		
CATEGORY	A	B	C	D	
LPV DA	6368-1 250 (200-1)				
LNAV/VNAV DA	6459-1¼ 341 (300-1¼)				
LNAV MDA	6480-1 362 (300-1)			6480-1¼ 362 (300-1¼)	
CIRCLING	6740-1 553 (600-1)	6760-1 573 (600-1)	6760-1½ 573 (600-1½)	6840-2 653 (700-2)	

SW-1, 19 NOV 2009 to 17 DEC 2009

SW-1, 19 NOV 2009 to 17 DEC 2009