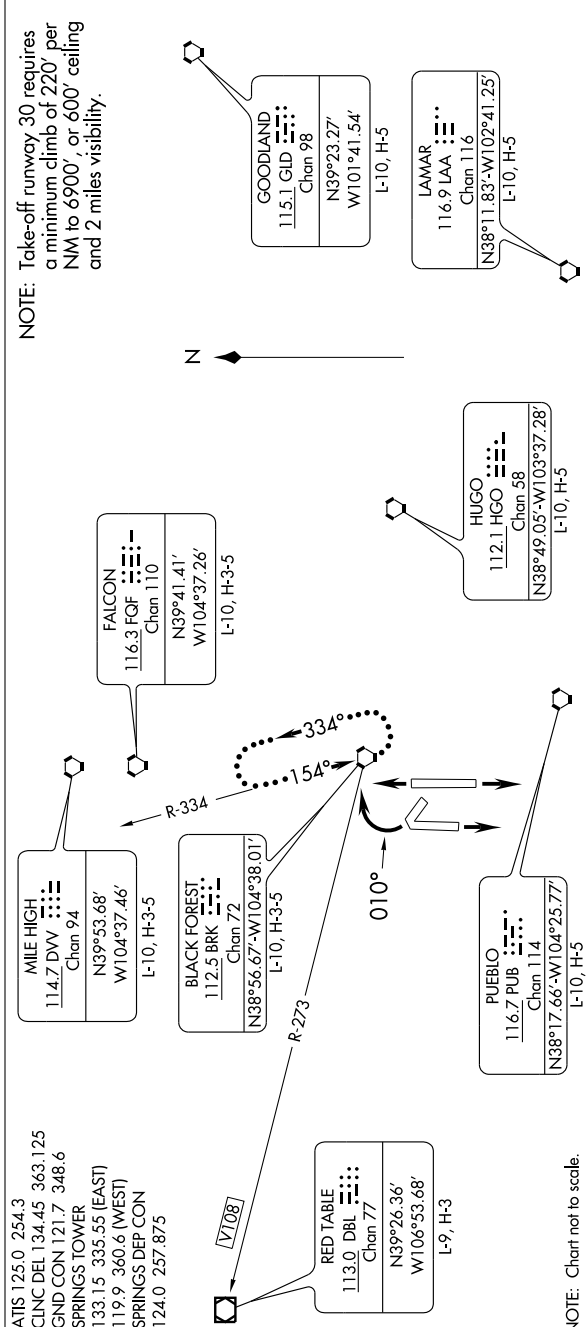


# SPRINGS TWO DEPARTURE

SL-87 (FAA)

COLORADO SPRINGS, COLORADO

600Z NOV 19 19 NOV 2009 to 17 DEC 2009



## DEPARTURE ROUTE DESCRIPTION

**TAKE-OFF RUNWAYS 12, 17R/L, 35R/L:** Fly runway/assigned heading for radar vectors to filed/assigned route.

Thence . . . . .

**TAKE-OFF RUNWAY 30:** Turn right within 2 NM heading 010° or assigned heading for radar vectors to filed/assigned route.

Thence . . . . .

. . . . . Maintain 10,000'. Expect clearance to filed altitude 10 minutes after departure.

**LOST COMMUNICATIONS:** If not in contact with ATC within 1 minute after departure from runways 12 and 17L/R turn left, from runways 30 and 35L/R turn right. All aircraft climb to filed altitude via direct BRK VORTAC, thence via filed/assigned route. Aircraft filed V108 westbound: continue climb in holding pattern to cross BRK VORTAC at or above 14,000'.

# SPRINGS TWO DEPARTURE