

WAAS CH <b>72813</b> <b>W26A</b>	APP CRS <b>255°</b>	Rwy Idg TDZE Apt Elev	<b>6402</b> <b>1918</b> <b>1930</b>
--	------------------------	-----------------------------	---

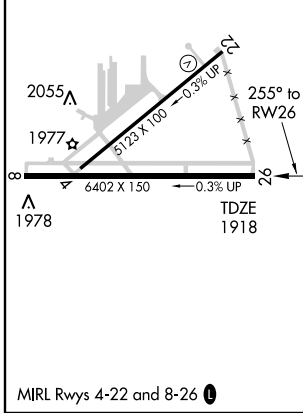
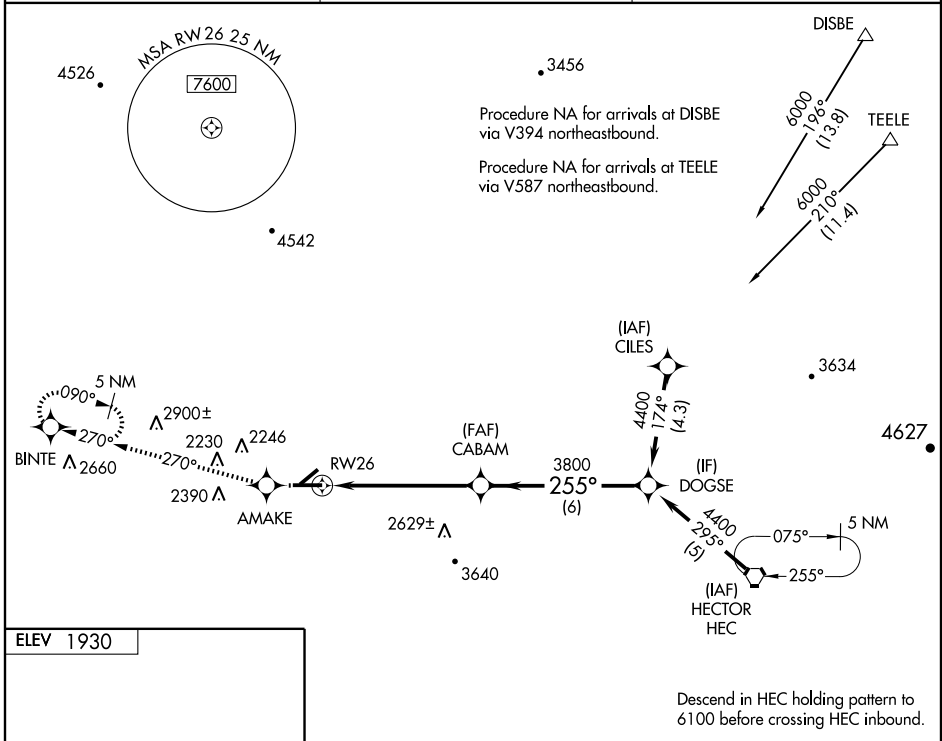
# RNAV (GPS) RWY 26

DAGGETT/BARSTOW-DAGGETT (DAG)

**⚠** Circling NA for Cat D south of Rwy 8-26. DME/DME RNP-0.3 NA. Visibility reduction by helicopters NA. VDP NA when using Victorville altimeter setting. When local altimeter setting not received, use Victorville altimeter setting and increase all DAs 211 feet and all MDAs 220 feet. Increase LPV all Cats visibility ¾ mile, LNAV Cat A/B ¼ mile, Cat C ¾ mile, Cat D ½ mile, Circling Cats A/B/C ¼ mile.

**⚠** MISSED APPROACH: Climb to 5100 direct AMAKE and via track 270° to BINTE and hold, continue climb-in-hold to 5100.

ASOS <b>132.175</b>	LOS ANGELES CENTER <b>132.5 284.7</b>	UNICOM <b>123.0 (CTAF) 0</b>
------------------------	--	---------------------------------



5100	AMAKE	trk 270°	BINTE	DOGSE
↑	✧		✧	
*LNAV only	*2.3 NM to RW26			
RW26	CABAM	DOGSE	4400	Procedure Turn NA
			255°	GS 3.00°
			3800	TCH 55
	2.3 NM	3.4 NM	6 NM	
CATEGORY	A	B	C	D
LPV DA	2217-1 299 (300-1)			
LNAV MDA	2700-1 782 (800-1)	2700-1¼ 782 (800-1¼)	2700-2¼ 782 (800-2¼)	2700-2½ 782 (800-2½)
CIRCLING	2700-1 770 (800-1)	2780-1¼ 850 (900-1¼)	2860-2¾ 930 (1000-2¾)	2860-3 930 (1000-3)

SW-3, 19 NOV 2009 to 17 DEC 2009

SW-3, 19 NOV 2009 to 17 DEC 2009