

RNAV (GPS) RWY 31L

DALLAS-LOVE FIELD (DAL)

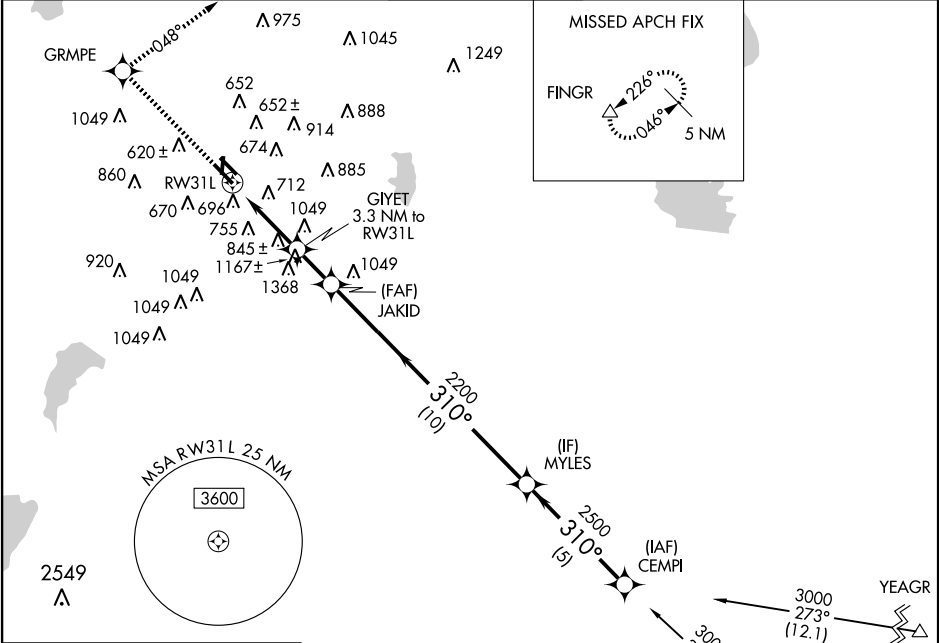
WAAS CH 72808 W31A	APP CRS 310°	Rwy Idg TDZE 8800 476 Apt Elev 487
----------------------------------------	------------------------	------------------------------------------------------------------



▼ For inoperative MALSR, increase LPV all Cats visibility to RVR 5000. DME/DME RNP-0.3 NA.

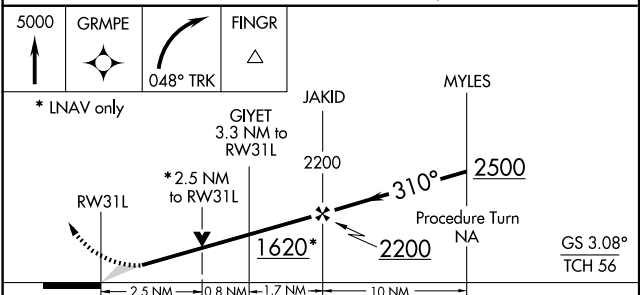
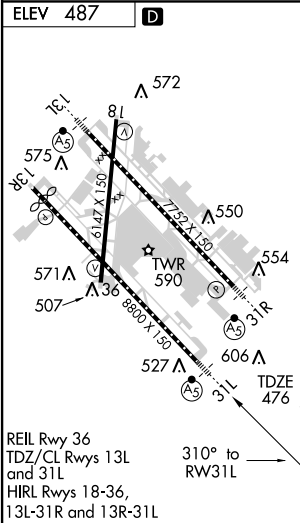
MISSED APPROACH: Climb to 5000 direct GRMPE and right turn via 048° track to FINGR and hold.

ATIS 120.15	REGIONAL APP CON NORTH 124.3 282.275 SOUTH 125.2 343.65	LOVE TOWER 123.7 239.3	GND CON 121.75 348.6	CLNC DEL 127.9
-----------------------	-----------------------------------------------------------------------------	----------------------------------	--------------------------------	--------------------------



SC-2, 19 NOV 2009 to 17 DEC 2009

SC-2, 19 NOV 2009 to 17 DEC 2009



CATEGORY	A	B	C	D
LPV DA	769/24 293 (300-½)			
LNAV MDA	1360/40 884 (900-¾)	1360-2¼ 884 (900-2¼)	1360-2½ 884 (900-2½)	1360-2½ 884 (900-2½)
CIRCLING	1360-1¼ 873 (900-1¼)	1360-2¾ 873 (900-2¾)	1360-3 873 (900-3)	1360-3 873 (900-3)