

DALLAS, TEXAS

AL-106 (FAA)

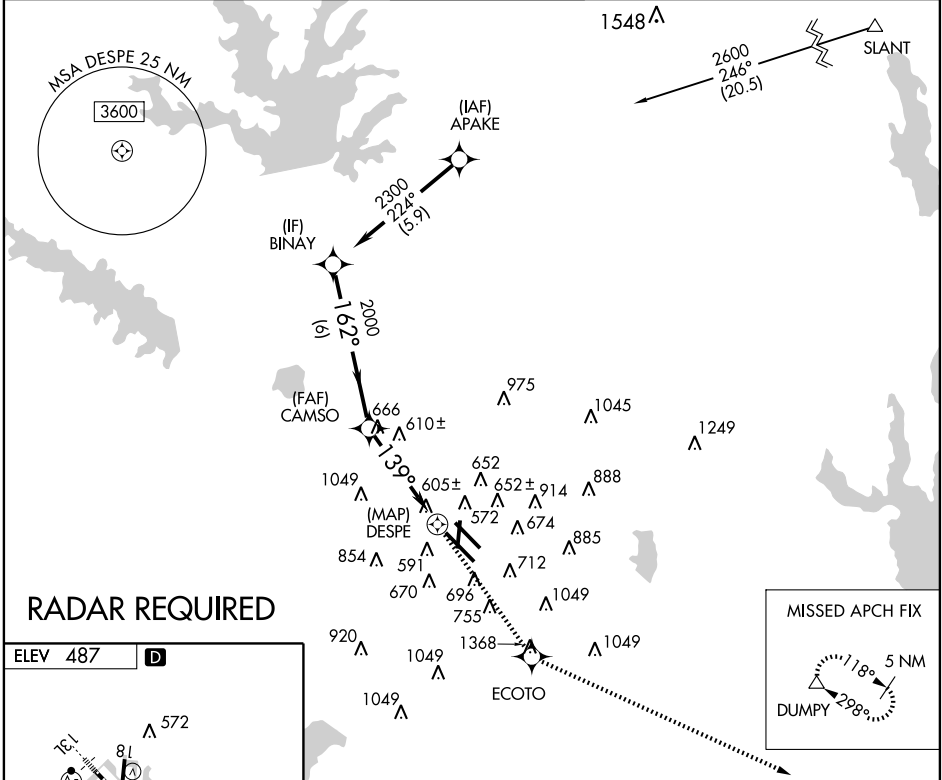
RNAV (GPS) Y RWY 13R

DALLAS-LOVE FIELD (DAL)

APP CRS 139°	Rwy Idg 8310
	TDZE 478
	Apt Elev 487

▽ DME/DME RNP-0.3 NA.	MISSED APPROACH: Climb to 5000 direct ECOTO and via 109° track to DUMPY and hold, continue climb-in-hold to 5000.
▲ Visibility reduction by helicopters NA.	

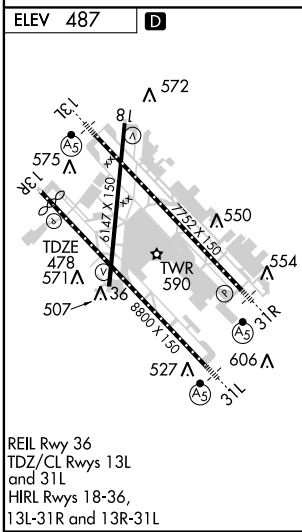
ATIS 120.15	REGIONAL APP CON NORTH 124.3 282.275 SOUTH 125.2 343.65	LOVE TOWER 123.7 239.3	GND CON 121.75 348.6	CLNC DEL 127.9
-----------------------	---	----------------------------------	--------------------------------	--------------------------



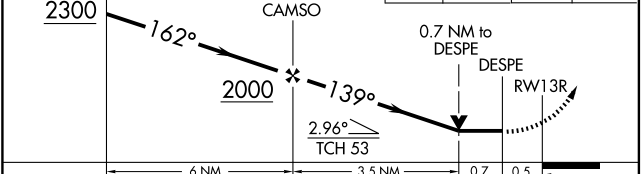
SC-2, 19 NOV 2009 to 17 DEC 2009

SC-2, 19 NOV 2009 to 17 DEC 2009

RADAR REQUIRED



5000	ECOTO	109° TRK	DUMPY
↑	✧	↖	△



CATEGORY	A	B	C	D
LNAV MDA	920-1	442 (500-1)	920-1¼ 442 (500-1¼)	920-1½ 442 (500-1½)
CIRCLING	1020-1	533 (600-1)	1020-1½ 533 (600-1½)	1160-2¼ 673 (700-2¼)

DALLAS, TEXAS
Orig 09239

32° 51' N - 96° 51' W

RNAV (GPS) Y RWY 13R

DALLAS-LOVE FIELD (DAL)